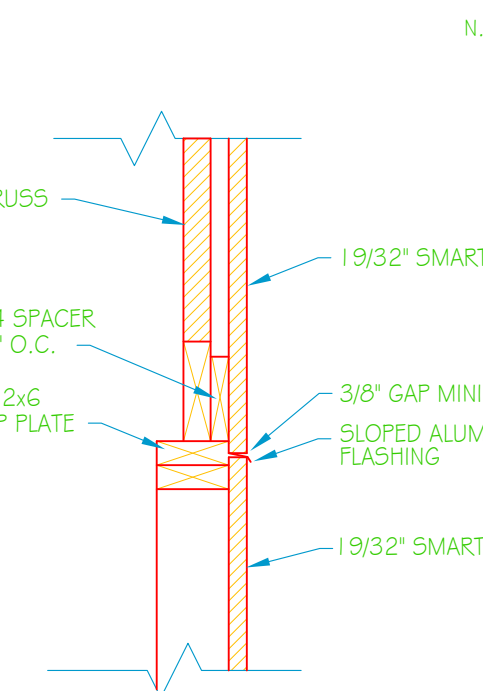
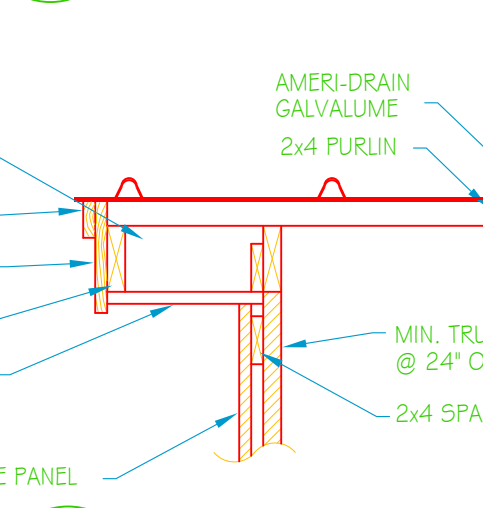


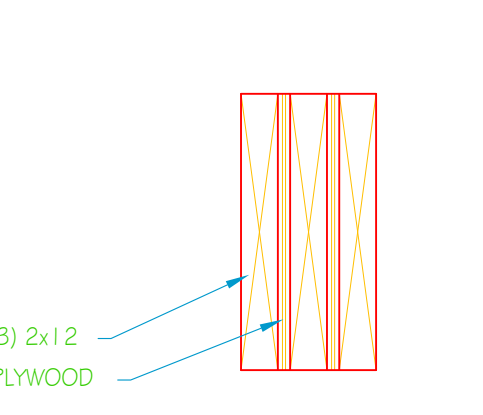
HURRICANE CLIP DETAIL
N.T.S.



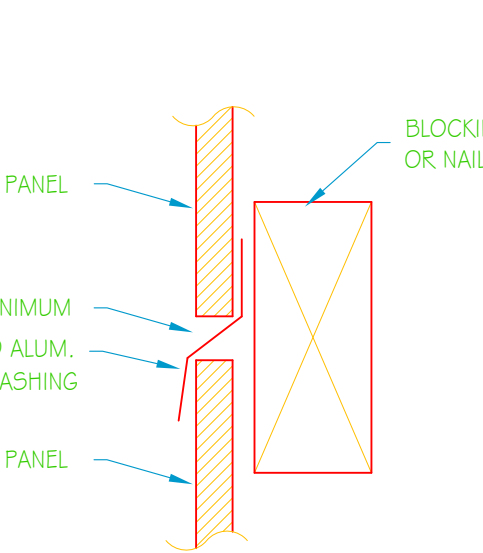
A-A SECTION
A-1
1" = 1'-0"



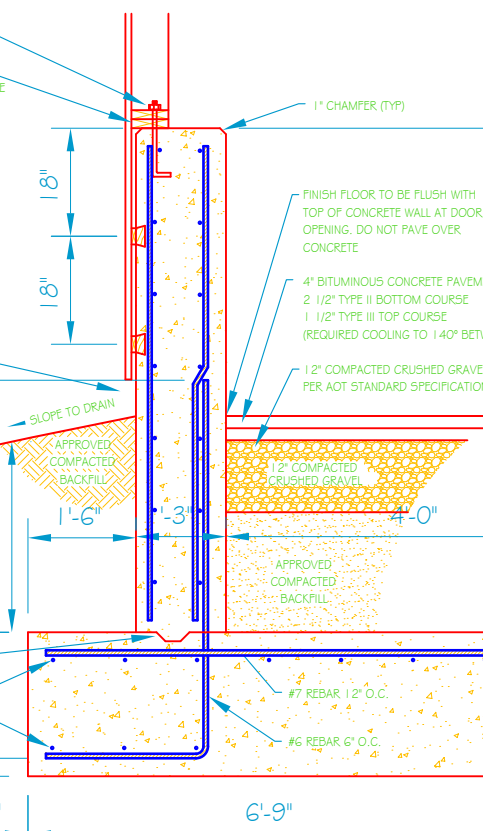
B-B SECTION
A-1
1" = 1'-0"



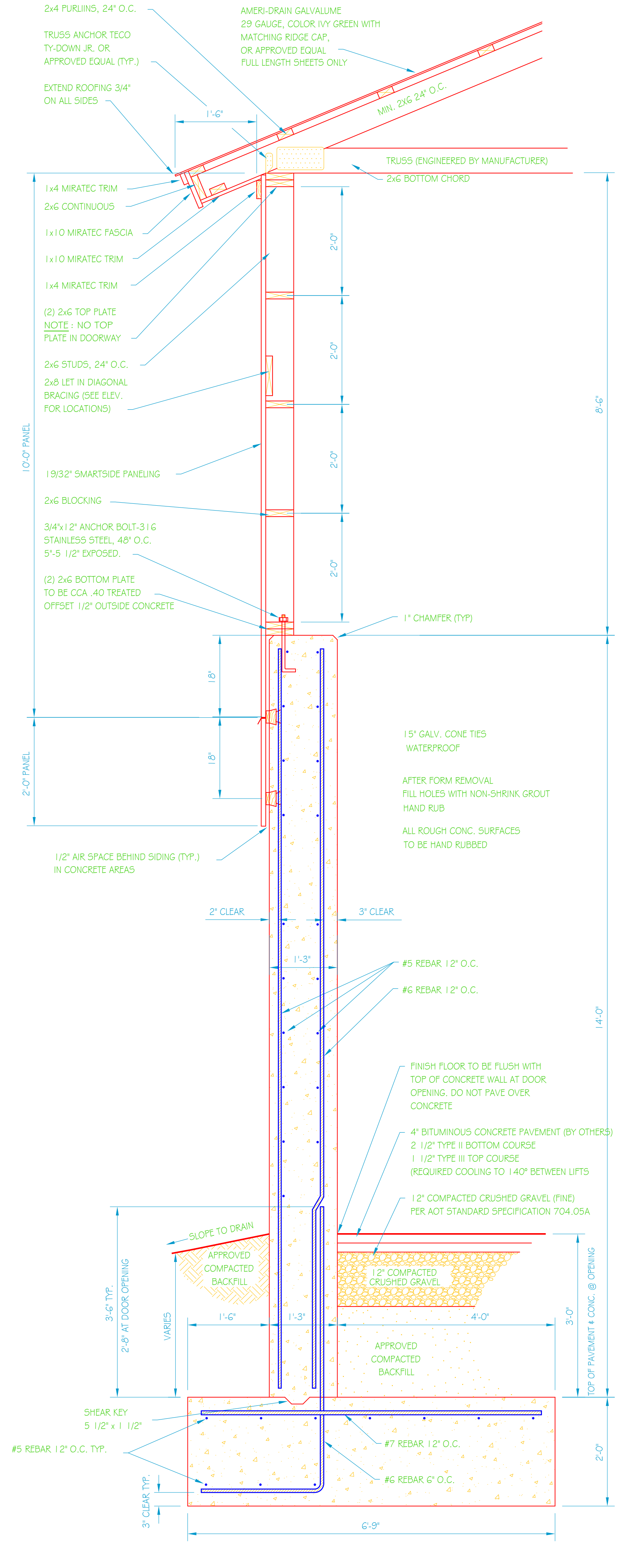
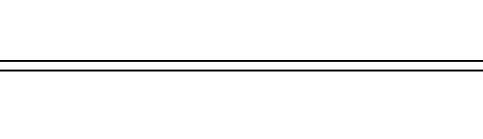
HEADER DETAIL
N.T.S.



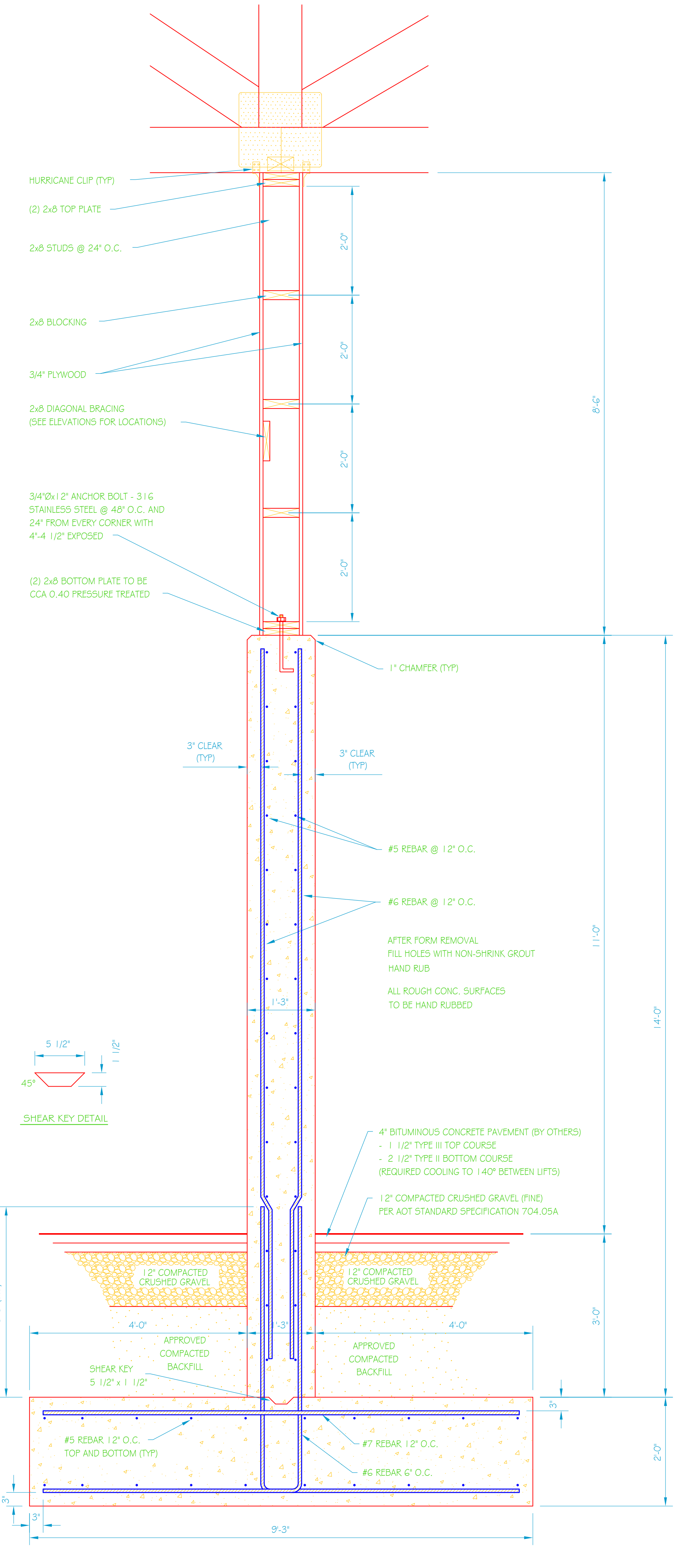
HORIZ. JOINT DETAIL
N.T.S.



C WALL SECTION
A-2
3/4" = 1'-0"



A WALL SECTION
A-1
3/4" = 1'-0"



B CENTER WALL SECTION
A-1
3/4" = 1'-0"

GENERAL NOTES

ALL BUILDINGS RELATED EXCAVATION, FILL, BACKFILL, COMPACTION WILL BE PERFORMED BY VTRANS AND COORDINATED WITH GENERAL CONTRACTOR.
ALL SUB BASE OF GRAVEL, COMPACTION, FINAL GRADING AND PAVING OF DRIVES AND PARKING AREAS WILL BE PERFORMED BY VTRANS AND COORDINATED WITH GENERAL CONTRACTOR.

TRUSS NOTES:

TRUSS MANUFACTURER TO PROVIDE DEPT. OF STATE BUILDINGS ENGINEER A SET OF ENGINEERED & STAMPED DRAWINGS FOR APPROVAL PRIOR TO TRUSS MANUFACTURE (ENGINEER MUST BE LICENSED IN VERMONT).

TRUSS MANUFACTURER TO PROVIDE THE CONTRACTOR WITH ALL NECESSARY INSTRUCTIONS FOR PROPER TRUSS INSTALLATION, ANCHORAGE, BRACING.
TRUSS DESIGN LOADS IN ACCORDANCE WITH THE 1987 B.O.C.A. FOR VERMONT.

MINIMUM LOADS:

- LIVE - PER 1987 B.O.C.A. FOR VERMONT (40 PSF MIN.)
- DEAD - AS CALCULATED FROM TRUSS & ROOF MATERIAL
- 5 PSF ON BOTTOM CORD
- WIND - 25 PSF
- DIAGONAL WIND BRACING PER TRUSS MANUFACTURER.

LUMBER NOTES:

FRAMING MEMBERS TO BE KILN DRIED CONSTRUCTION GRADE SPRUCE 54S 19% MOISTURE CONTENT.
PLATES & NAILERS IN CONTACT WITH CONCRETE TO BE CCA 0.40 TREATED
ALL FASTENERS TO BE GALVANIZED AND SHALL BE APPROPRIATELY SIZED.

SMARTSIDE PANEL NOTES:

8d GALVANIZED NAILS FOR 19/32" PANELS PENETRATING STUDS 1 1/2" NAIL SPACING- 6" MAX. PERIMETER, 12" MAX FIELD, 3/8" MIN. FROM EDGES. NAILS TO BE SET FLUSH. DO NOT COUNTERSINK NAILS INTO PANEL.
MINIMUM 3/8" GAP REQUIRED AT HORIZONTAL JOINTS OF PANEL SIDING.
SMARTSIDE PANEL SIDING MUST NOT CONTACT CONCRETE. 1/2" CLEARANCE MIN.
SMARTSIDE PANEL SIDING MUST NOT CONTACT GROUND. 6" CLEARANCE MIN.
PAINT ALL PANEL SURFACES INCLUDING BOTTOM EDGES
ADDITIONAL SMARTSIDE PANEL INSTALLATION INFO CAN BE FOUND AT WWW.SMARTSIDEONLINE.COM OR CALL 800-648-6893

FINISH NOTES:

ROOFING COLOR: IVY GREEN (BY AMERI-DRAIN) OR AS DIRECTED BY ENGINEER
PAINT TO BE OLYMPIC ACRYLIC LATEX SATIN FINISH.
COLOR TO BE DETERMINED BY ENGINEER.
APPLY PAINT AS SOON AS POSSIBLE AFTER SIDING IS INSTALLED.
PRE-PRIME ALL FINISH MATERIAL PRIOR TO INSTALLATION.
APPLY TWO COATS OF FINISH.

CONCRETE NOTES:

PER A.O.T. 2006 STANDARD SPECIFICATIONS FOR CONSTRUCTION.
CONCRETE STRENGTH TO BE 3500 PSI
CONCRETE FINISH TO BE FLOATED.
CONCRETE TO BE CLASS 181 PER AOT STANDARD SPECIFICATIONS TABLE 501.03A WITH 5% ± 1% AIR ENTRAINMENT, AND 2'-4" SLUMP.
RE-BAR TO BE CONTINUOUS THROUGH CONSTRUCTION JOINTS.
1/2" "V" JOINTS IN EXPOSED FACE OF CONSTRUCTION JOINTS.
3/4" CHAMFER ON EACH FACE OF EXPANSION JOINTS.
NO HORIZONTAL CONSTRUCTION JOINTS IN WALLS - CONTINUOUS POUR.
CONTRACTOR TO LEAVE NO METAL WITHIN 1" OF SURFACE. USE 1" DEEP PLASTIC CONES AT ALL TIES AND PLUG ALL TIE HOLES WITH AN APPROVED NON-SHRINK GROUT.
ALL ROUGH CONC. FORM JOINTS AND OTHER ROUGH SURFACES TO BE RUBBED FINISH.
ALL RE-BAR TO BE GRADE 60 WITH 3" CLEARANCE ON ALL SIDES UNLESS NOTED OTHERWISE.
RE-BAR TO BE STORED ON BLOCKING 4" MINIMUM ABOVE GROUND.
CONCRETE SUPPLIER TO PROVIDE TEST CYLINDERS FOR CONCRETE TESTING.
ALL CONCRETE TESTING TO BE DONE BY OWNER. CONTRACTOR IS RESPONSIBLE FOR SCHEDULING.
CONCRETE CURING SHALL FOLLOW IMMEDIATELY AFTER FORM REMOVAL PER A.O.T. STANDARD 501.17A. WATER CURING WILL BE REQUIRED UNLESS ALTERNATE MEANS OF CURING IS APPROVED, IN WRITING, BY THE PROJECT ENGINEER.



VERMONT
AOT STANDARD
44' x 64' SALT / SAND SHED
SECTIONS

REVISIONS

SCALE: A5 NOTED	DATE: MARCH 2009	DRAWN BY: B. McAVOY	APPR. BY: R. BARRY
-----------------	------------------	---------------------	--------------------

AOT STANDARD
44' x 64'
SALT / SAND SHED
SECTIONS

A-2
2 OF 2