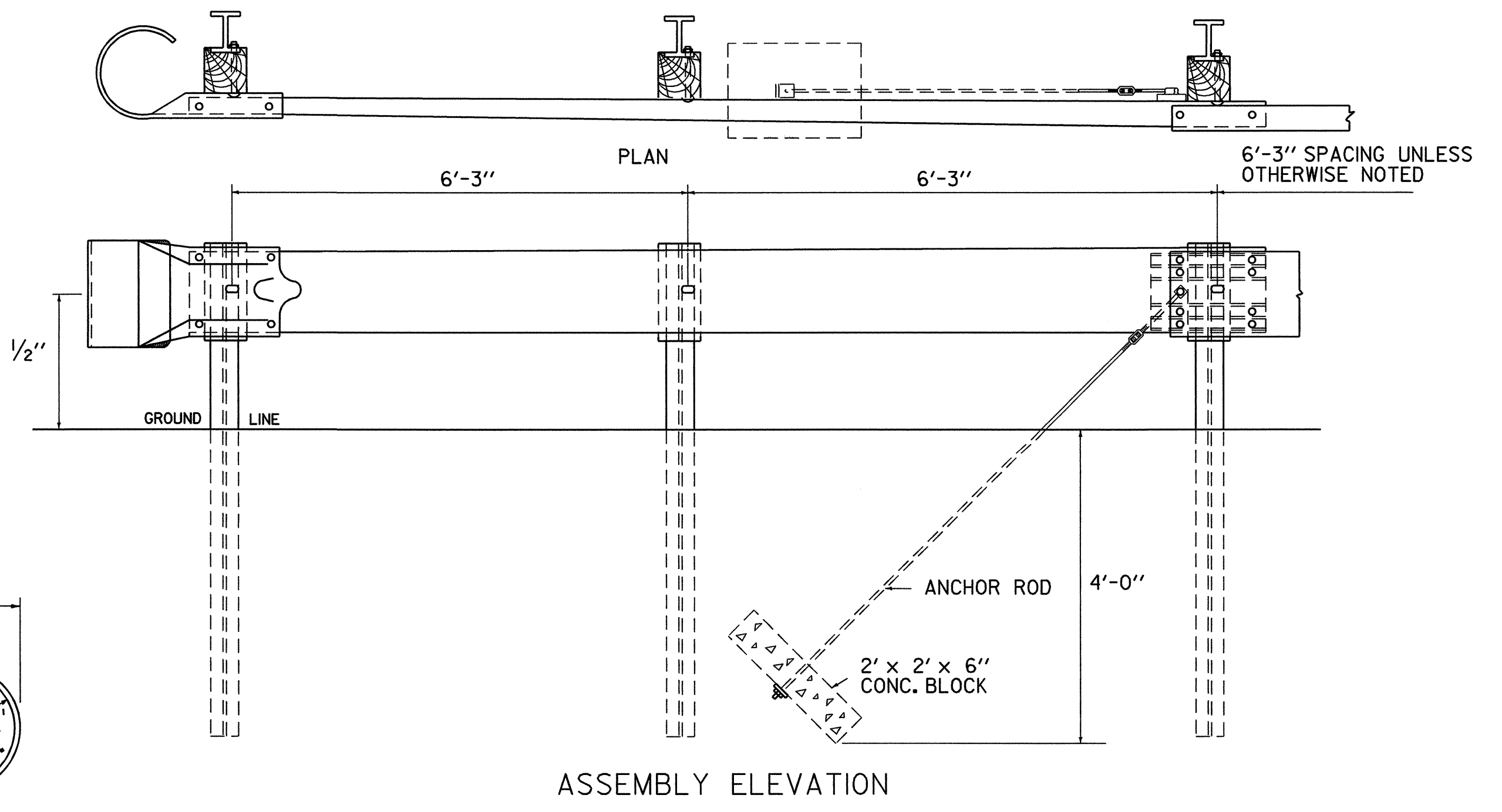
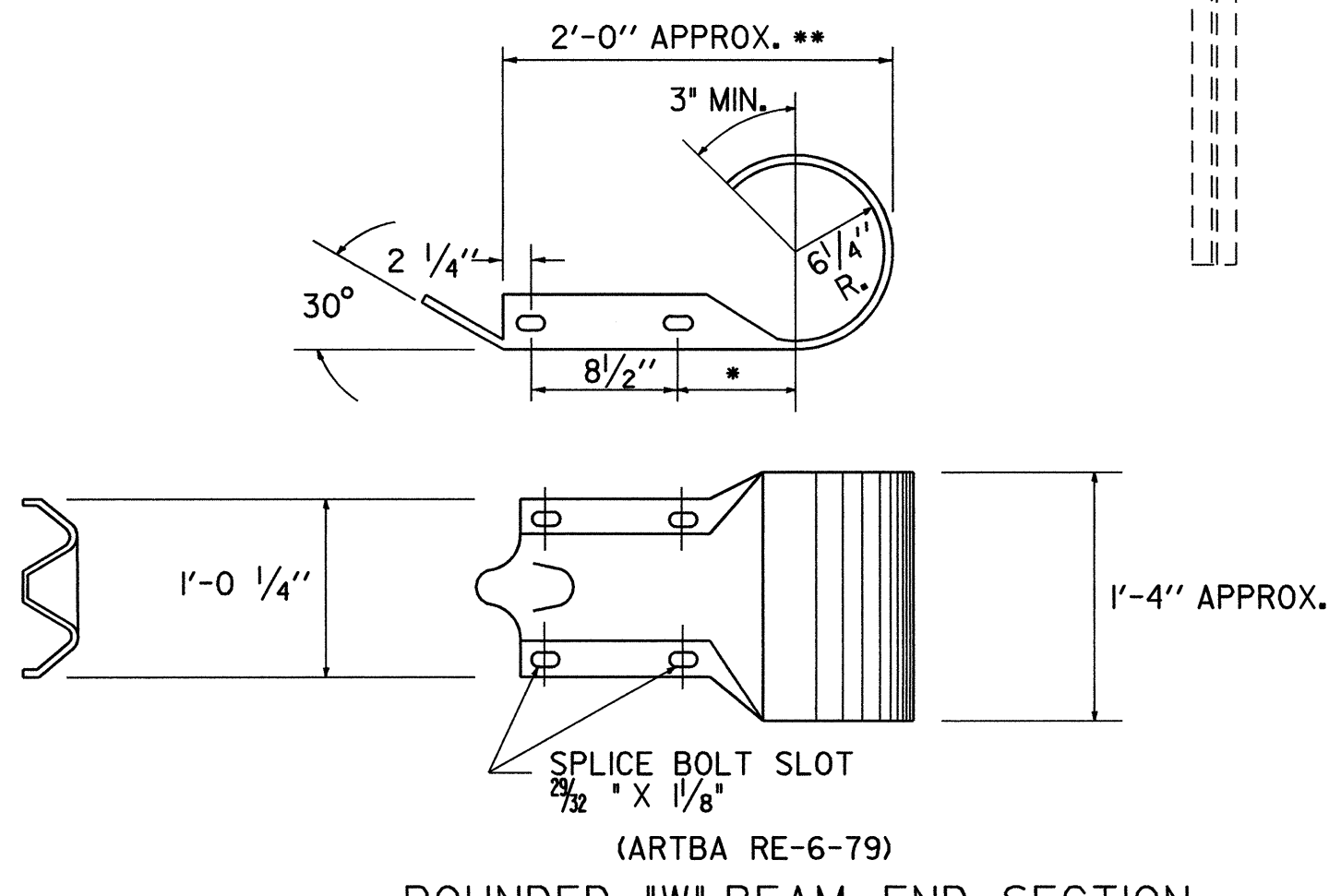


APPROACH END DETAIL
 NHS APPROVED FOR USE WHERE DESIGN SPEED IS 40 OR LESS MPH
 NON-NHS APPROVED FOR USE WHERE DESIGN SPEED IS 50 OR LESS MPH



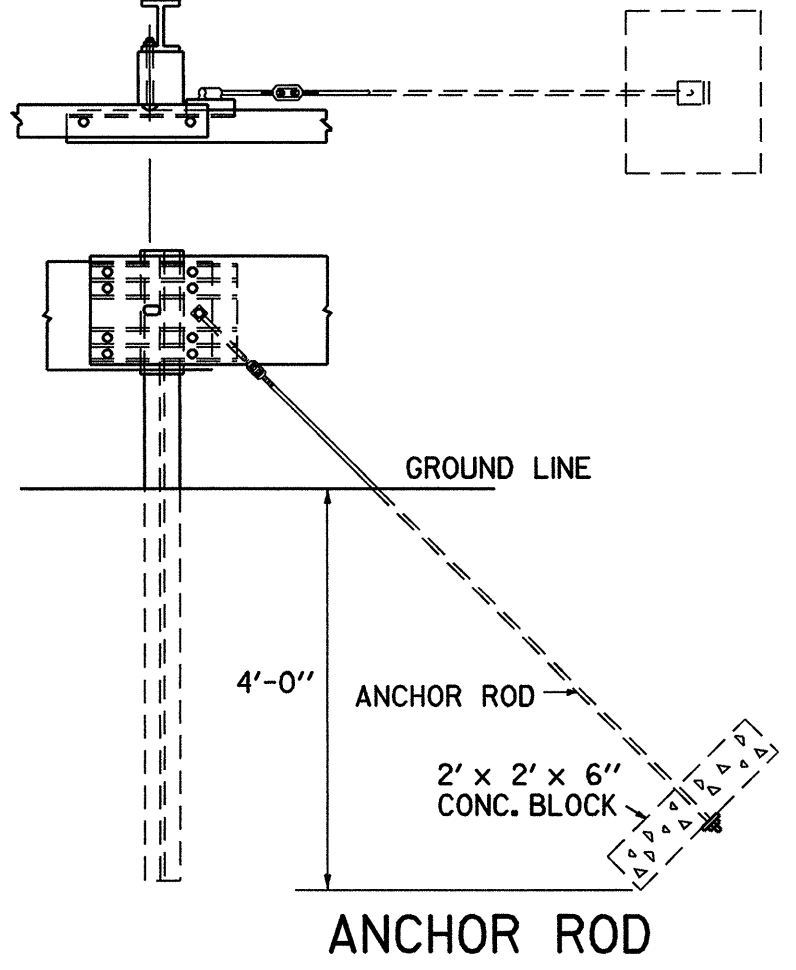
ASSEMBLY ELEVATION



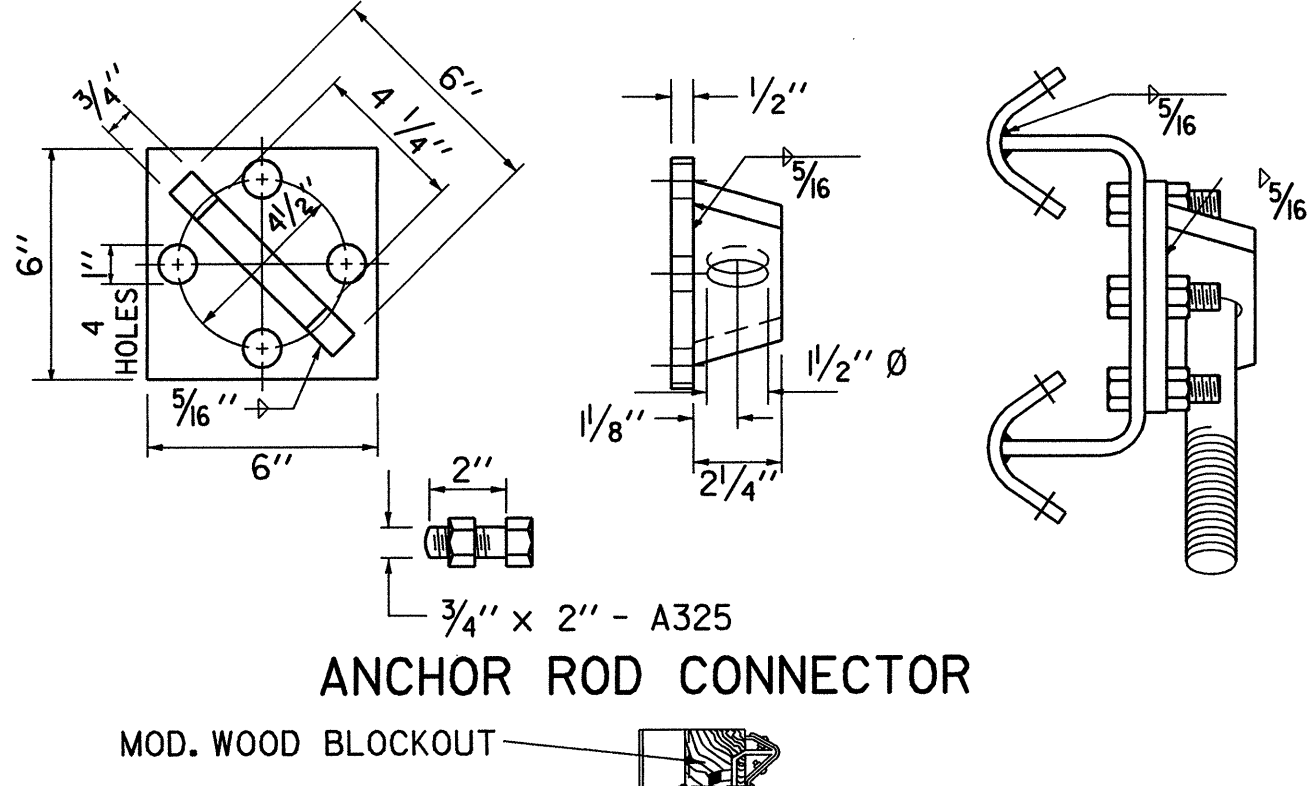
ROUNDED "W" BEAM END SECTION
 * THIS DIMENSION IS 7/2" INRE-7-79. IF THE DIMENSION IS USED IN THIS PART, IT WILL GIVE AN ACCEPTABLE OVERALL LENGTH (**) OF APPROXIMATELY 2'-11/2."*

TRAILING END TERMINAL FOR USE ON ONE-WAY HIGHWAYS

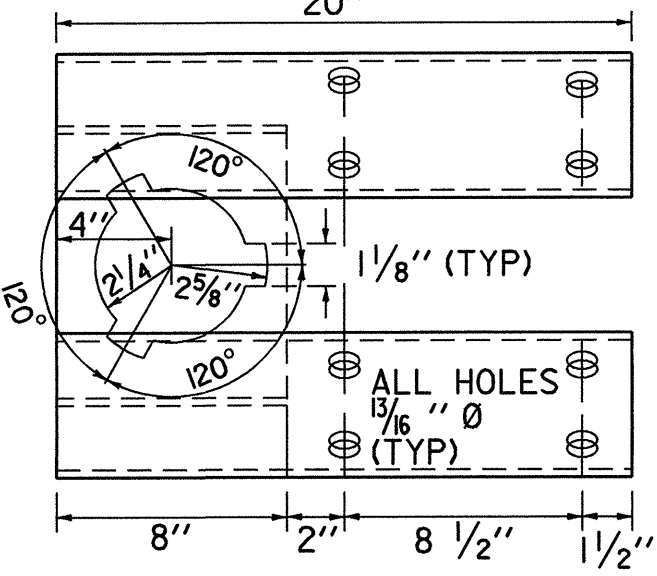
- GENERAL NOTES:
1. ALL METAL PARTS SHALL BE GALVANIZED.
 2. ALL WOOD POSTS SHALL BE GIVEN A PRESERVATIVE TREATMENT.
 3. DETAILS PERTINENT TO THE STANDARD INSTALLATION OF "W" BEAM SECTIONS WILL BE FOUND ON STANDARD DRAWING G-1.
 4. FOR DESCRIPTION AND SPECIFICATIONS OF PARTS IDENTIFIED BY "ARTBA..." AND OTHER DETAILS OF POSTS, POST ACCESSORIES, FASTENERS AND RAIL ELEMENTS, SEE AASHTO-AGC-ARTBA JOINT TASK FORCE NO. 13, TITLED "A GUIDE TO STANDARDIZED HIGHWAY BARRIER HARDWARE", LATEST EDITION.



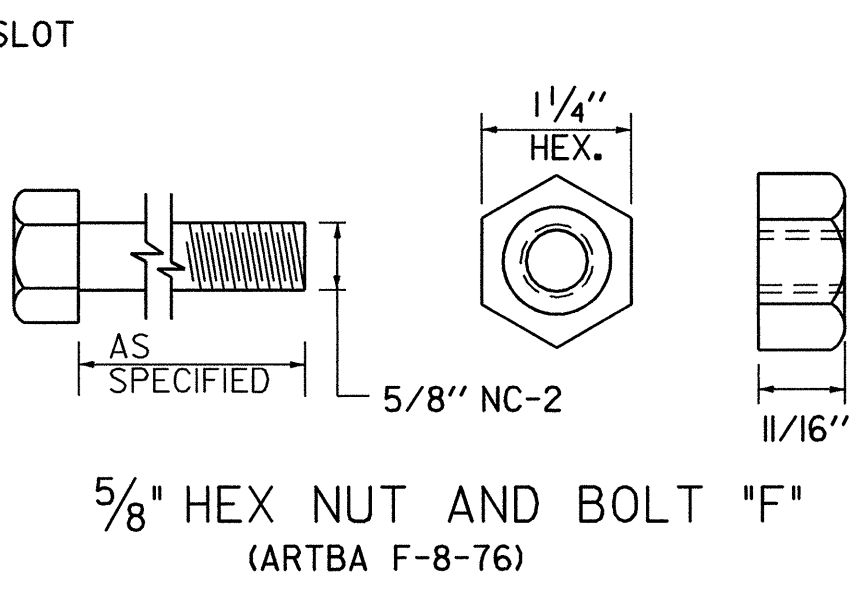
ANCHOR ROD



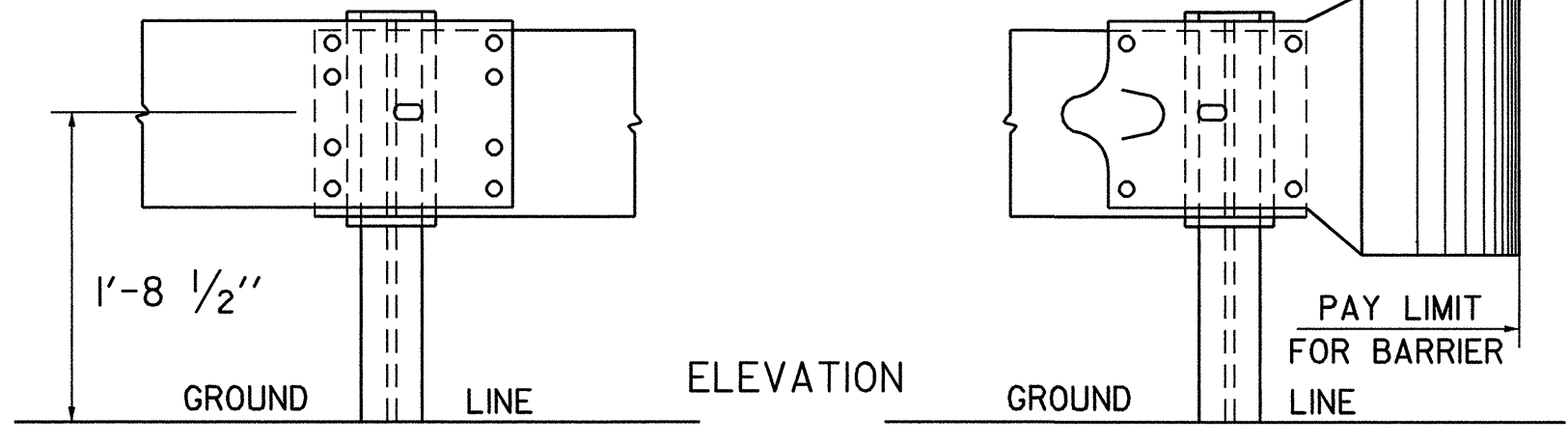
ANCHOR ROD CONNECTOR



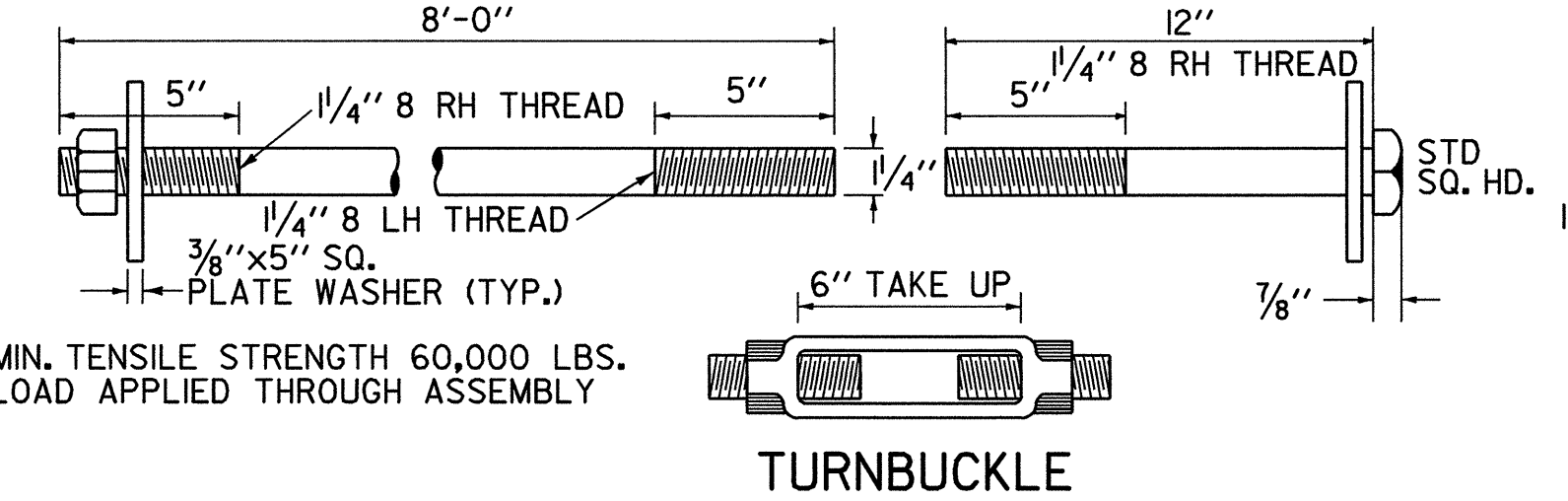
RECTANGULAR GUARDRAIL PLATE WASHER (ARTBA F-12-73)



5/8" HEX NUT AND BOLT "F" (ARTBA F-8-76)



STEEL BEAM MEDIAN BARRIER
 NOTE: TO BE USED OUTSIDE CLEAR ZONE ONLY.



TURNBUCKLE

FASTENER DETAILS

OTHER STANDARD REQUIRED G-1

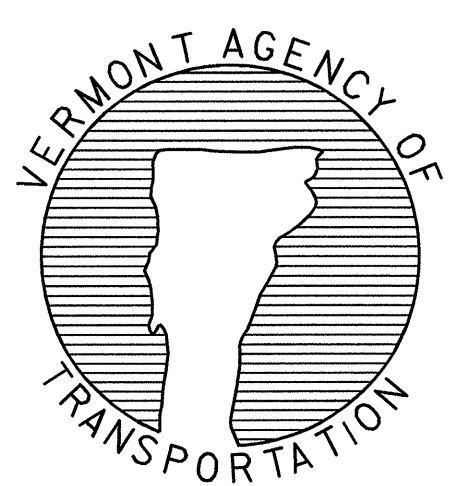
REVISIONS AND CORRECTIONS
 JUNE 1, 1994 - REISSUED, WITHOUT CHANGE, UNDER NEW SIGNATURES.
 JAN. 3, 2000 - UPDATED TO REFLECT METRIC STD. CHANGES

APPROVED

 DIRECTOR OF PROJECT DEVELOPMENT

 ROADWAY AND TRAFFIC DESIGN ENGINEER

STEEL BEAM GUARDRAIL APPROACH END TERMINAL
STEEL BEAM GUARDRAIL TRAILING END TERMINAL
ANCHOR FOR STEEL BEAM GUARDRAIL
STEEL BEAM MEDIAN BARRIER



STANDARD
G-1d