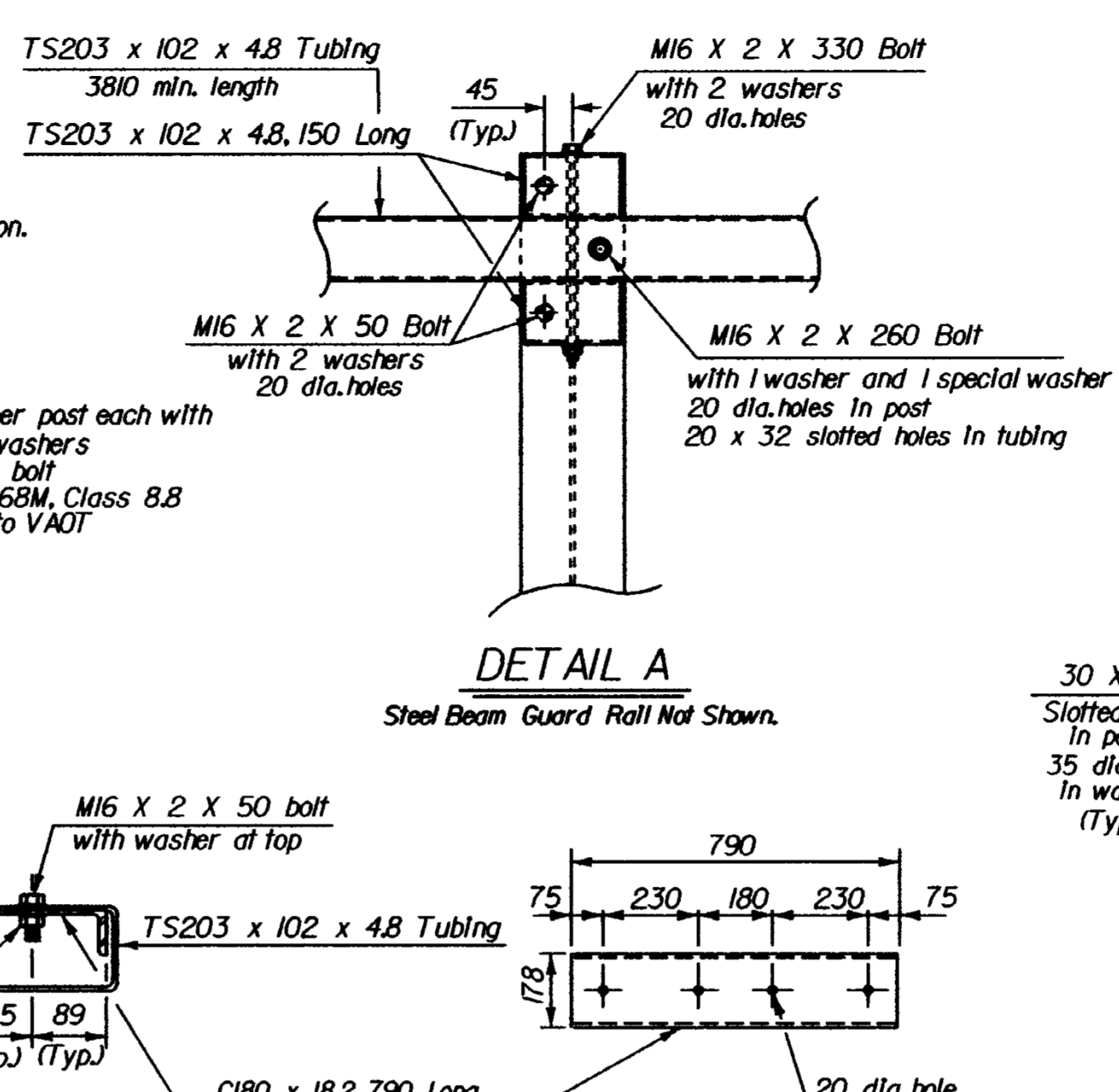
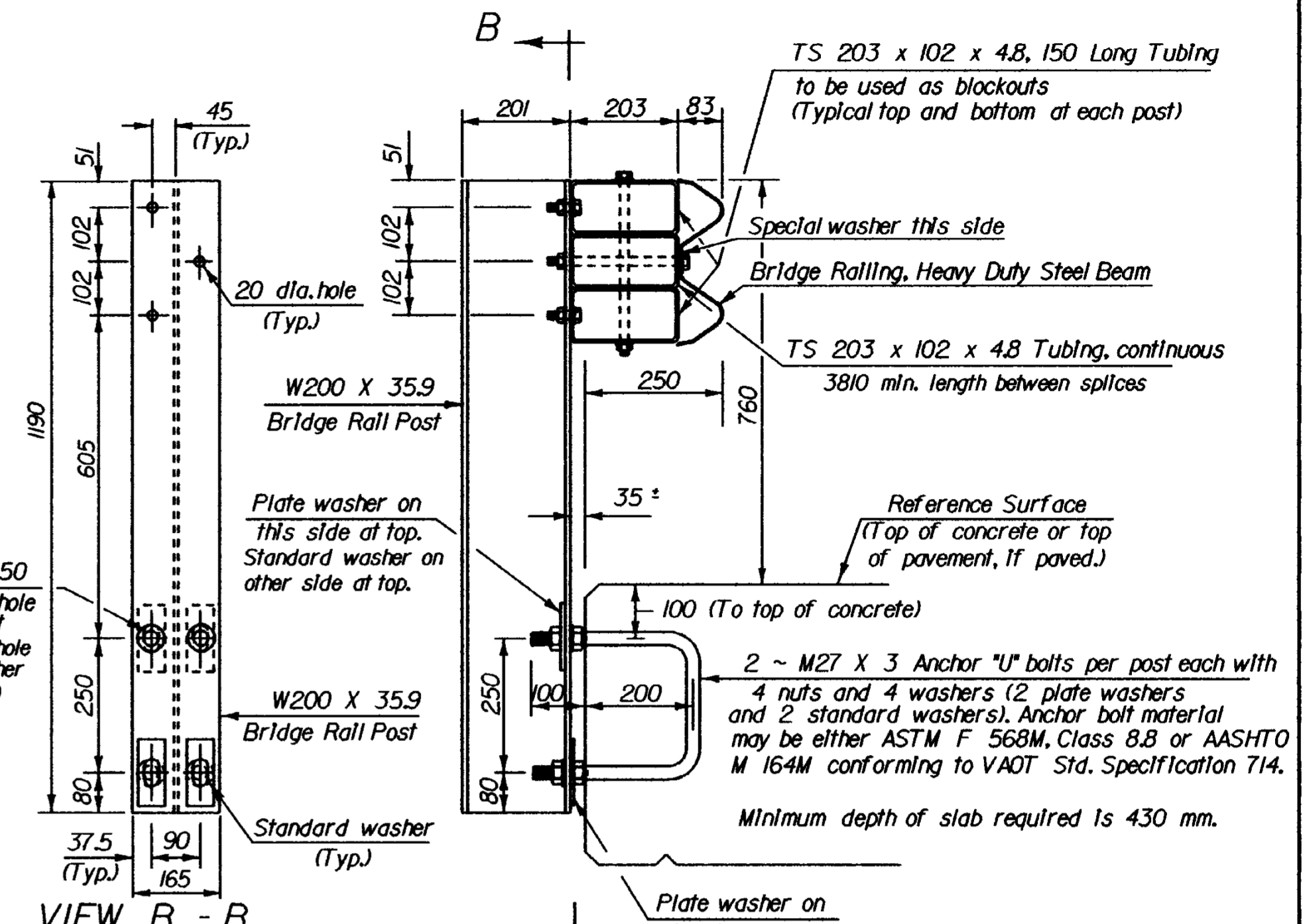


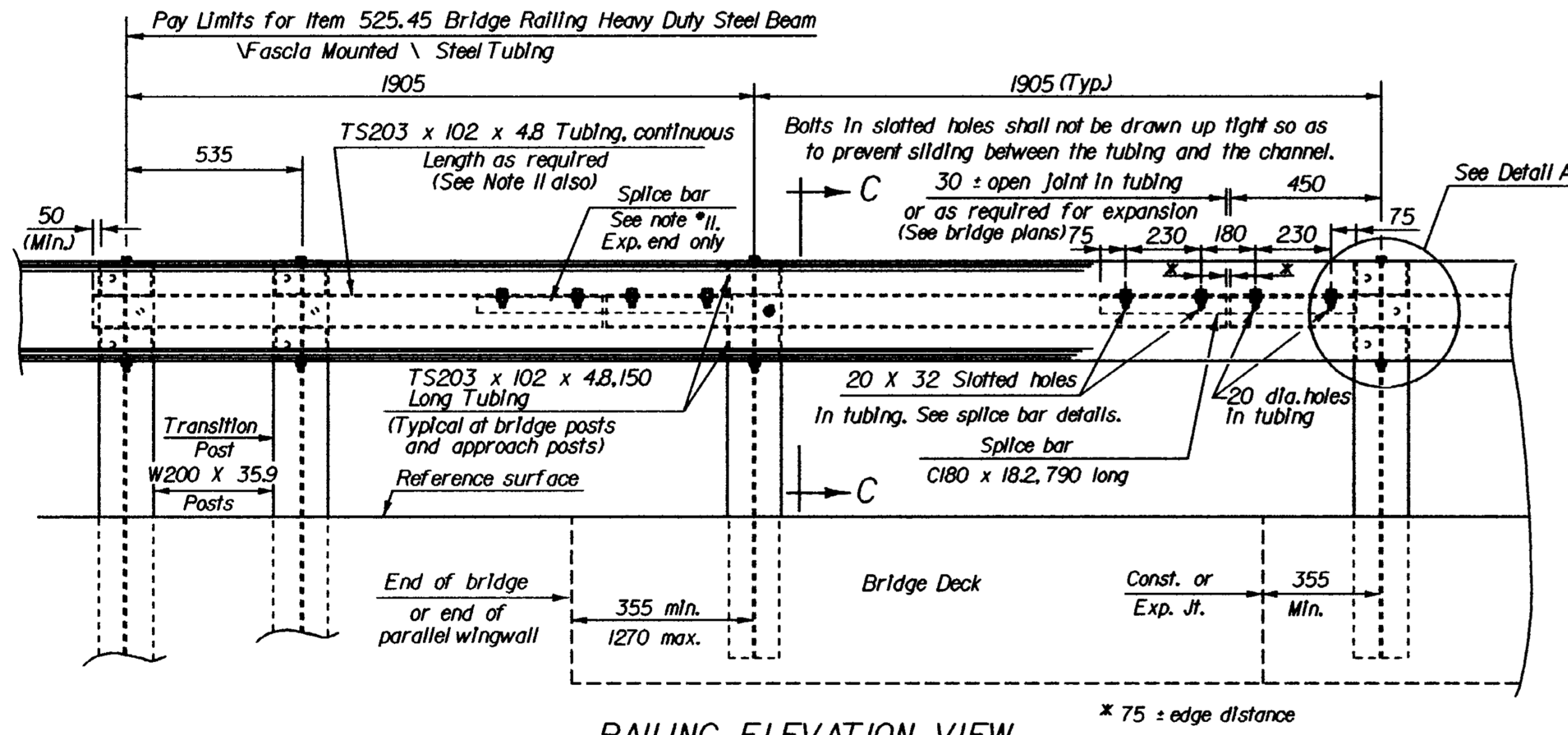
FASCIA MOUNTED WITH CURB



SPLICE BAR DETAILS



FASCIA MOUNTED WITHOUT CURB



RAILING ELEVATION VIEW (SHOWN LOOKING FROM WITHOUT CURB)

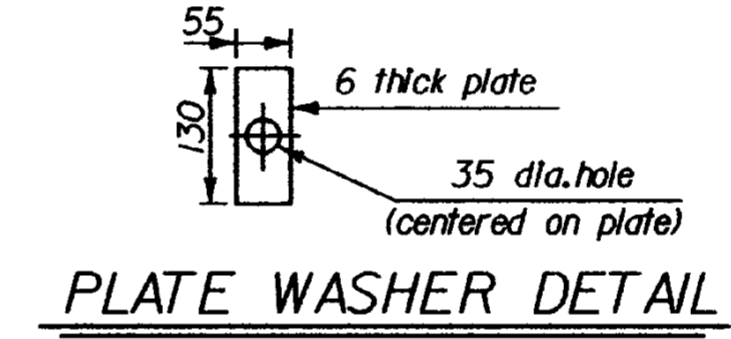
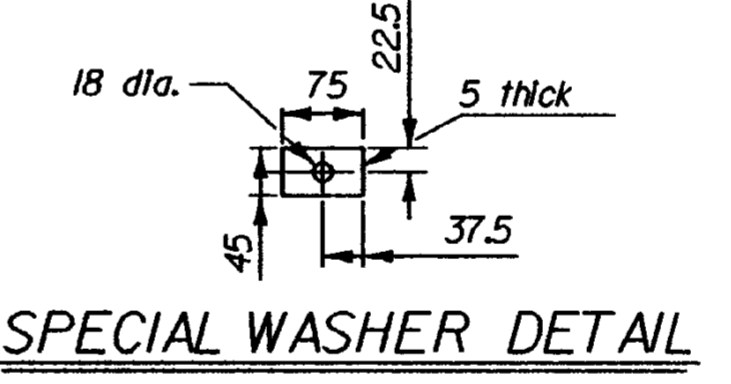
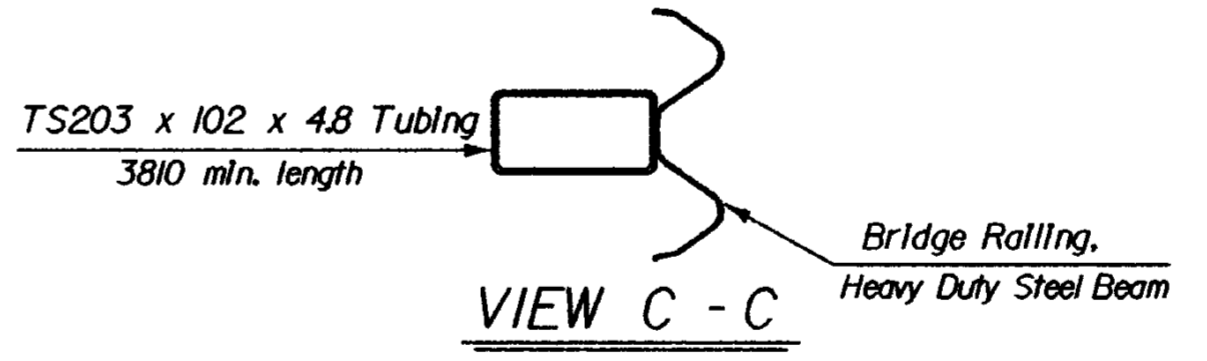


PLATE WASHER DETAIL



SPECIAL WASHER DETAIL



VIEW C - C

NOTES

- HEAVY DUTY STEEL BEAM GUARD RAIL SHALL CONFORM TO VAOT STD. SPECIFICATION 732.
- STRUCTURAL STEEL TUBING SHALL CONFORM TO VAOT STD. SPECIFICATION 732 AND SHALL BE GALVANIZED AFTER FABRICATION IN ACCORDANCE WITH AASHTO M 111.
- ANCHOR BOLTS, NUTS AND WASHERS SHALL BE GALVANIZED IN ACCORDANCE WITH AASHTO M 232 AND SHALL CONFORM TO VAOT STD. SPECIFICATION 714 UNLESS OTHERWISE NOTED.
- BRIDGE RAIL POSTS, SPECIAL WASHERS, PLATE WASHERS AND SPLICE BARS SHALL CONFORM TO AASHTO M 223/M 223M GRADE 345 AND SHALL BE GALVANIZED AFTER FABRICATION IN ACCORDANCE WITH AASHTO M 111.
- ALL BOLTS AND RELATED HARDWARE SHALL CONFORM TO AASHTO M 164M, TYPE I BOLTS AND SHALL BE HOT DIPPED OR MECHANICALLY GALVANIZED PER SPECIFICATION.
- SEE STANDARD DRAWING G-1M AND G-1M FOR ADDITIONAL DETAILS CONCERNING GUARDRAIL.
- SEE STANDARD DRAWING SB-R6-82M FOR APPROACH RAIL DETAILS AND FOR INFORMATION RELATIVE TO SCHEDULE I AND SCHEDULE II. ALL APPROACH RAIL SHALL BE HEAVY DUTY STEEL BEAM GUARDRAIL. ALSO SEE STD. DRWG. SB-R6-82M FOR HANDRAIL DETAILS (EXCEPT END DETAILS) IF HANDRAIL IS REQUIRED.
- ALL POSTS SHALL BE SET NORMAL TO GRADE.
- SPLICES FOR THE STEEL BEAM GUARDRAIL SHALL LAP IN THE DIRECTION OF TRAFFIC.
- SEE STANDARD DRAWING G-1M FOR DETAILS OF DELINEATORS. A DELINEATOR SHALL BE LOCATED AT EVERY FIFTH POST. PAYMENT SHALL BE SUBSIDIARY TO OTHER ITEMS.
- A RAILING JOINT SPLICE SHALL BE PROVIDED AT EACH SUPERSTRUCTURE EXPANSION JOINT.
- ALL FIELD CUT OR DRILLED AREAS SHALL BE COATED WITH AN APPROVED SEALANT.
- FOR RADI LESS THAN 290 m. THE STEEL TUBING SHALL BE SHOP BENT TO FIT THE APPLICABLE CURVE.
- THE DROP-WEIGHT TEAR TEST IN SECTION 732 SHALL NOT APPLY TO THE STRUCTURAL TUBING ON THIS STANDARD.

NOTE: ALL DIMENSIONS ARE IN MILLIMETERS (mm) EXCEPT WHERE NOTED.

REVISIONS AND CORRECTIONS  
JULY 10, 1997 - ORIGINAL APPROVAL DATE

APPROVED  
*[Signature]*  
DIRECTOR OF PROJECT DEVELOPMENT  
*[Signature]*  
Warren B. Dwyer  
STRUCTURES DESIGN ENGINEER

**BRIDGE RAILING, HEAVY DUTY STEEL BEAM / FASCIA MOUNTED / STEEL TUBING**

VERMONT AGENCY OF TRANSPORTATION  
**Metric STANDARD SB-R7-90M**