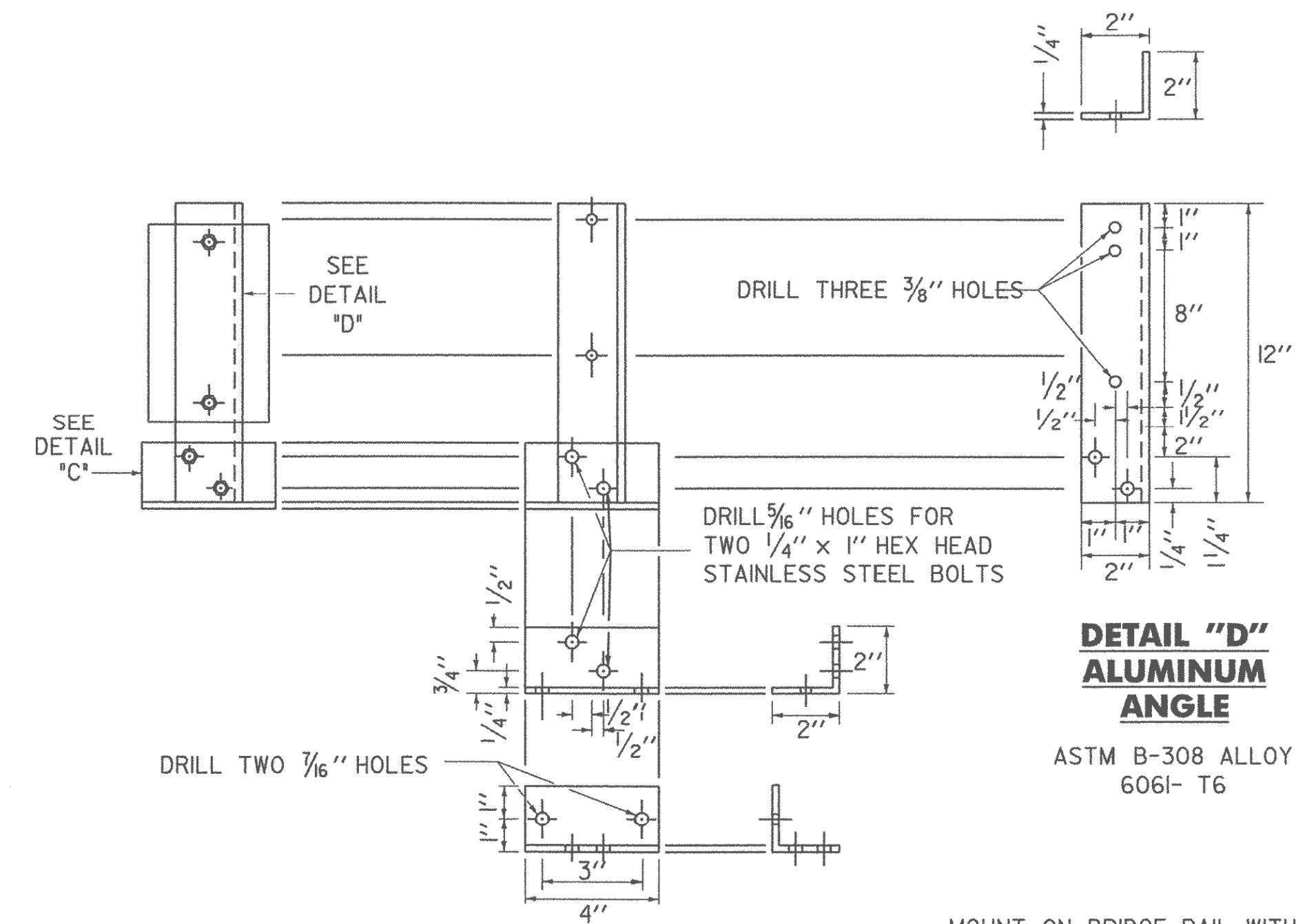
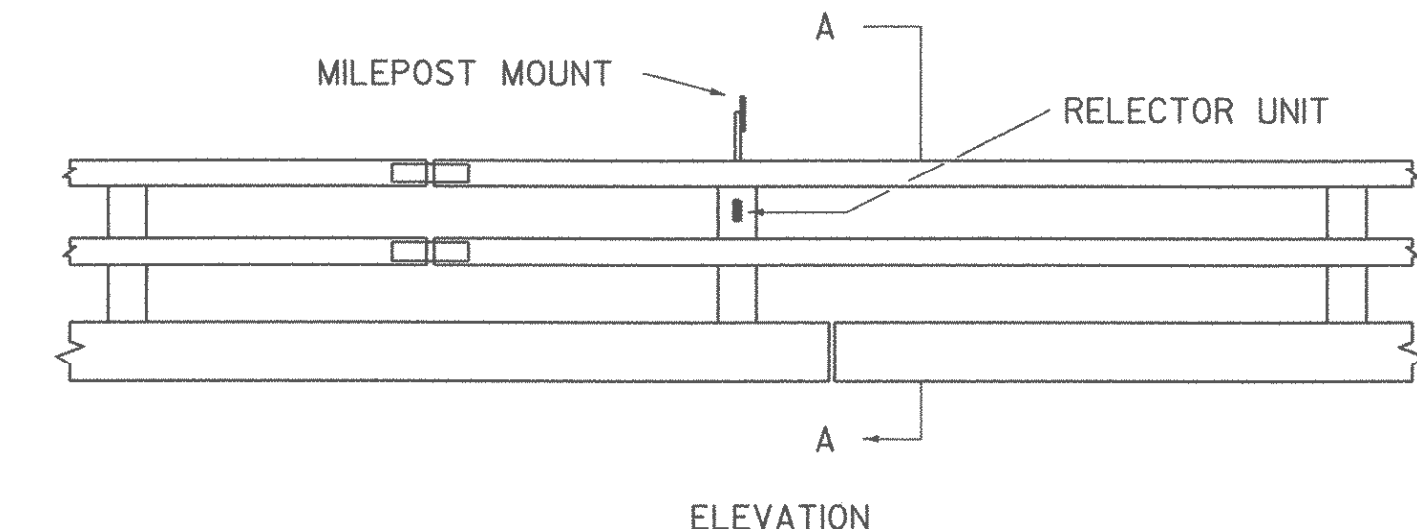
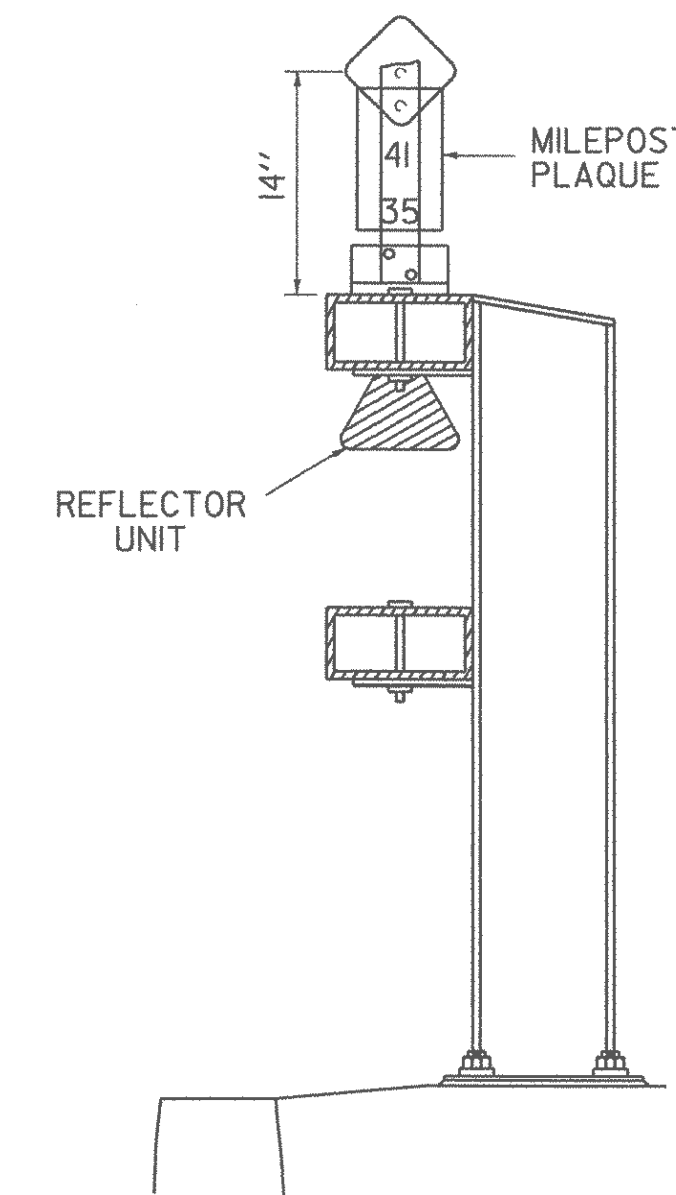
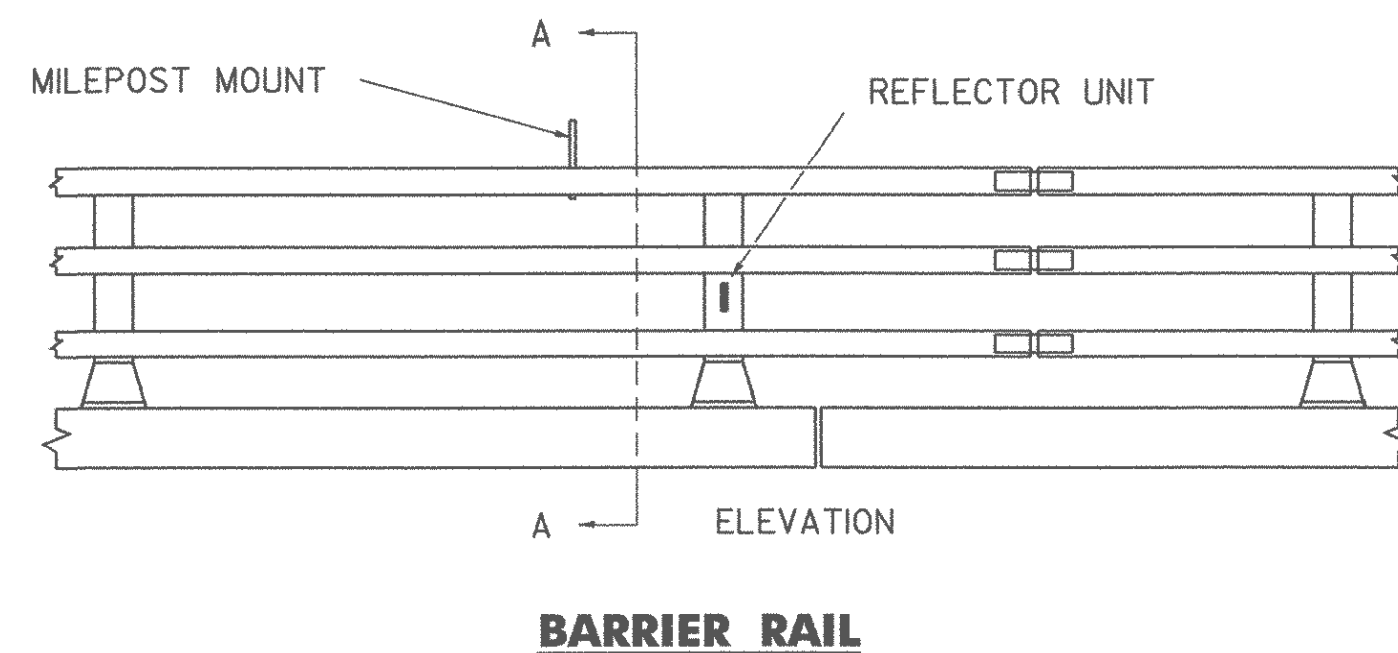
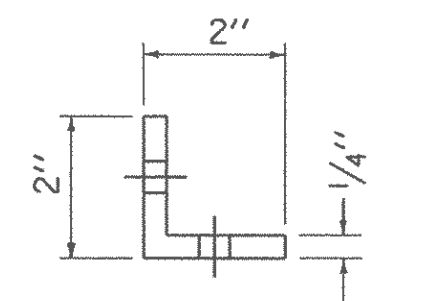


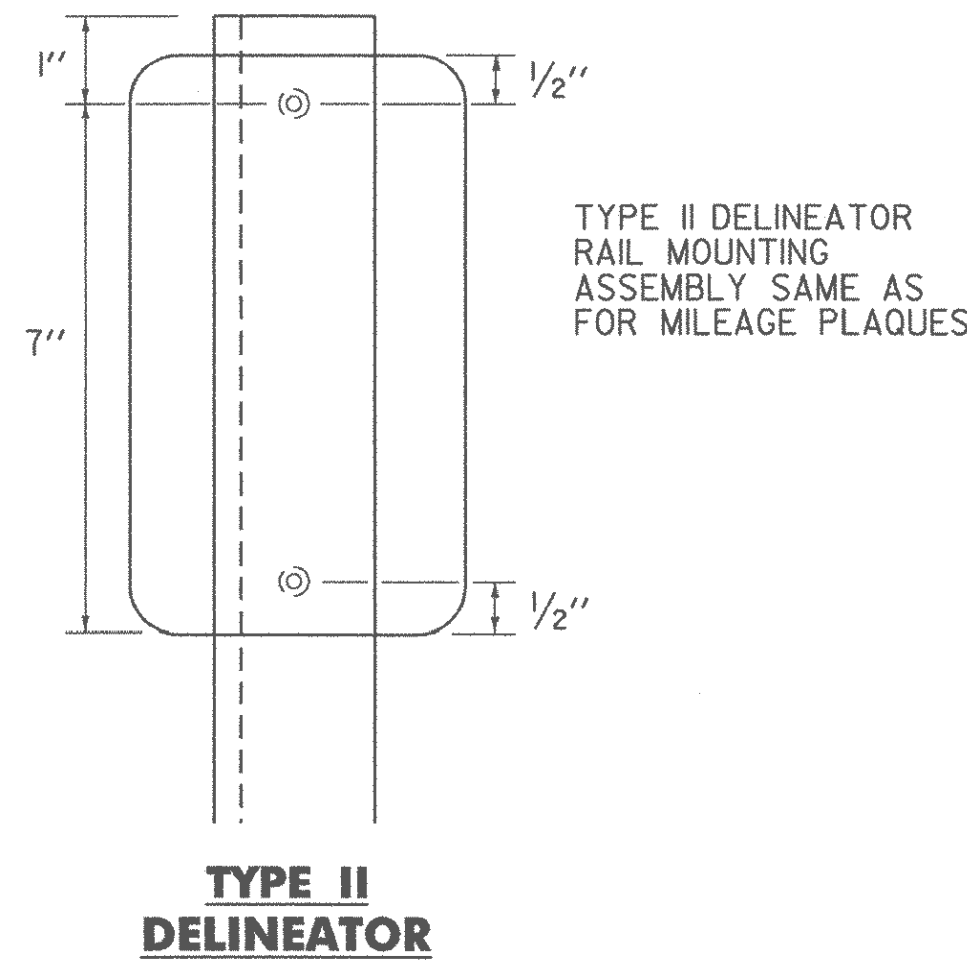
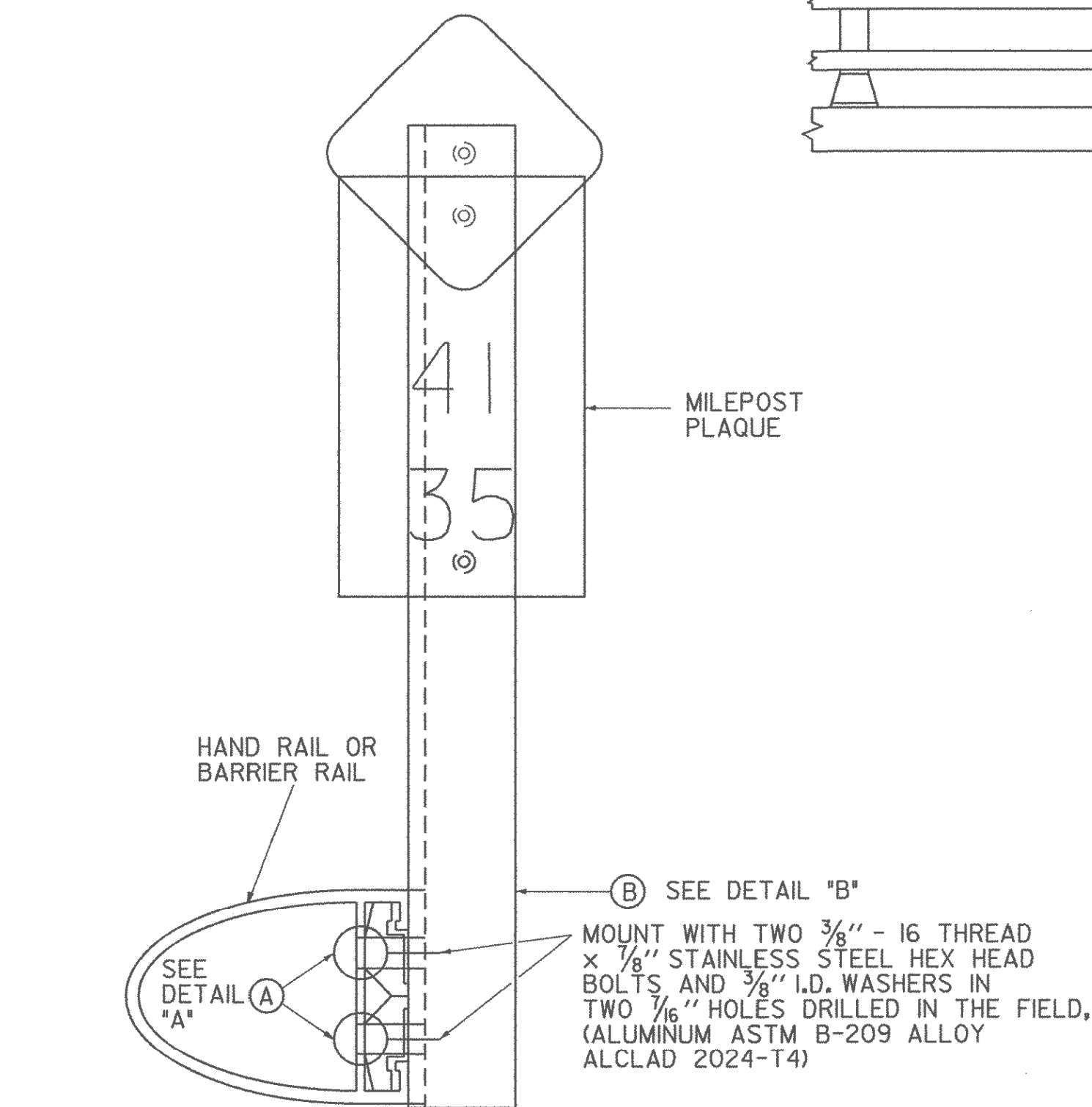
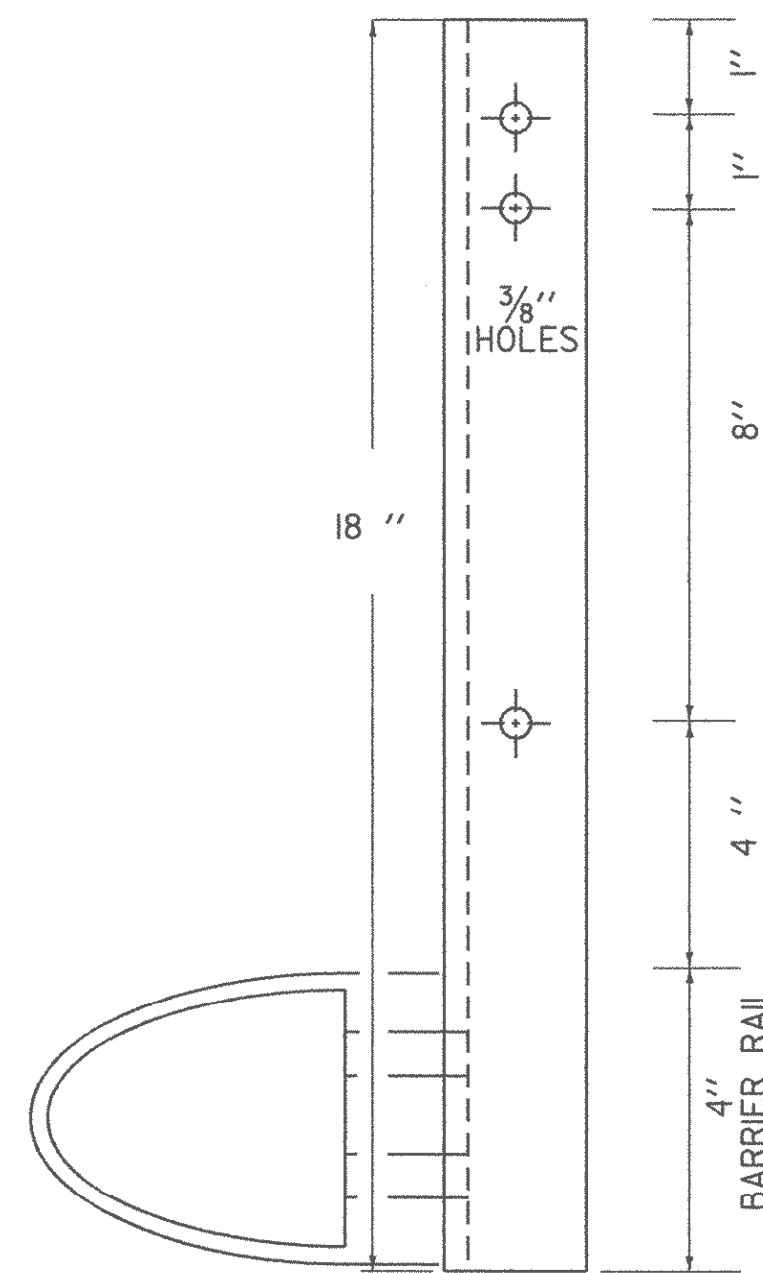
TYPE II DELINEATORS WILL BE RAIL MOUNTED AT 100' SPACING WHERE ACCELERATION OR DECELERATION LANES ARE CARRIED ACROSS STRUCTURES. SEE STANDARD E-198



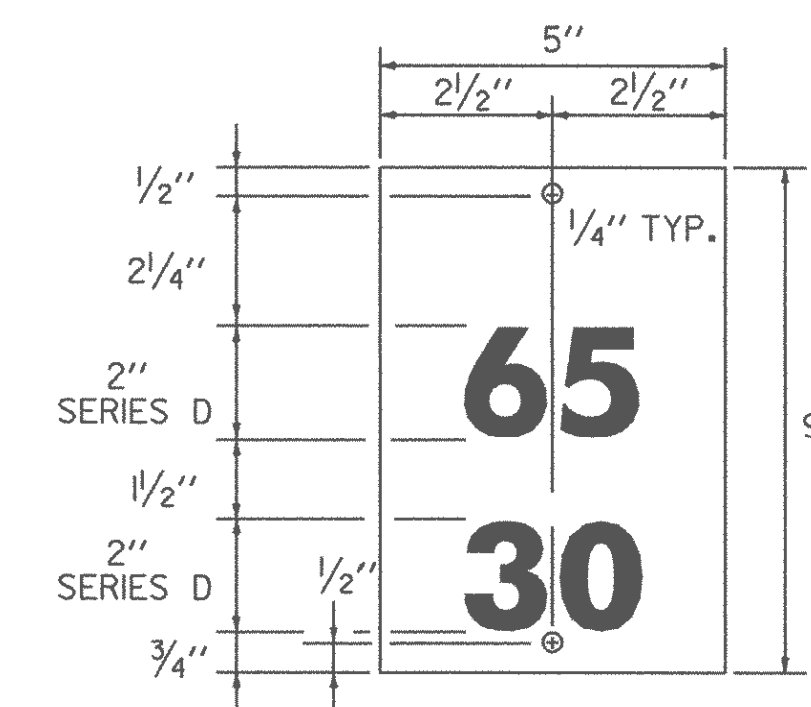
MOUNT ON BRIDGE RAIL WITH TWO 3/8" x 1/4" STAINLESS STEEL SELF TAPPING SCREWS AND 3/4" O.D. x 3/8" I.D. x 1/16" THICK WASHER, (ALUMINUM ASTM B-209 ALLOY ALCLAD 2024-T4).



THE REFLECTOR UNIT IS TO BE INSTALLED EVERY 30 FEET ON OR CLOSEST POST.



TYPE II DELINEATORS WILL BE RAIL MOUNTED AT 100' SPACING WHERE ACCELERATION OR DECELERATION LANES ARE CARRIED ACROSS STRUCTURES. ALSO SEE STANDARD E-198.



NOT TO SCALE

OTHER STDS. E-198 REQUIRED:

REVISIONS AND CORRECTIONS

SEPT. 10, 1987 - DATE OF ORIGINAL ISSUE
AUG. 18, 1995 - REVISED REFLECTOR UNIT LOCATION AND ADDED NOTE.

APRIL 1, 2005 - CHANGED TYPE II DELINEATORS

APPROVED

Richard Felchuk
DIRECTOR OF PROGRAM DEVELOPMENT

John A. Falk
TRAFFIC OPERATIONS ENGINEER

Michael...
FEDERAL HIGHWAY ADMINISTRATION

FREEWAY - EXPRESSWAY
DELINEATOR AND MILEPOST
MOUNTING ON BRIDGE RAIL



STANDARD
E-199