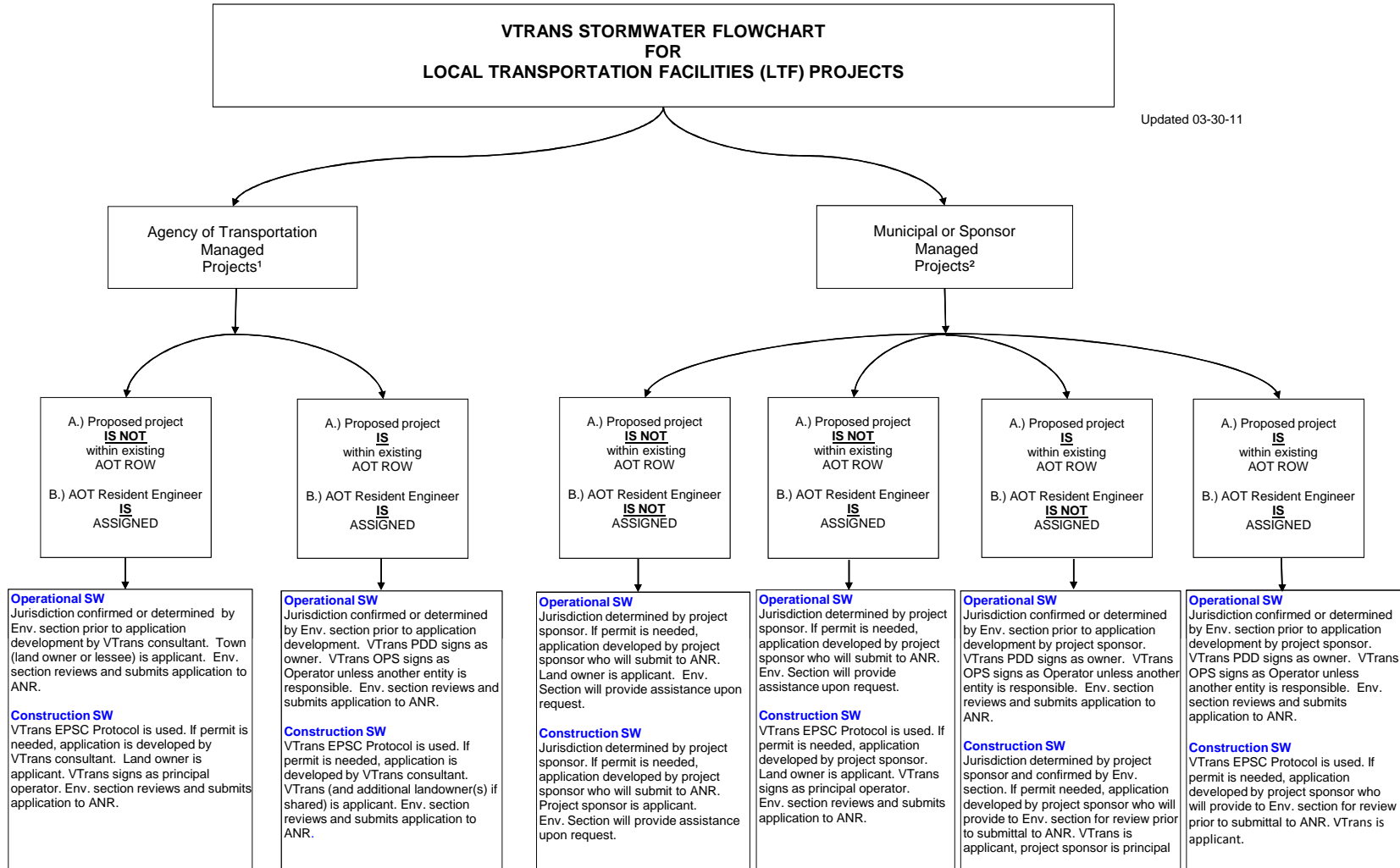


VTRANS STORMWATER FLOWCHART FOR LOCAL TRANSPORTATION FACILITIES (LTF) PROJECTS

Updated 03-30-11



Operational SW = GP3-9015 or Individual permit
Construction SW = GP3-9020 or Individual permit

EPSC Protocol: <http://www.aot.state.vt.us/TechServices/EnvPermit/erosionpreventionandsedimentcontrol.htm>

Questions: Operational SW - Jonathan Armstrong (802) 828-1332; Construction SW - Andrea Wright (802) 828-3507 or Bill Farley (802) 828-5483

1. Agency of Transportation Managed projects will include only those LTF projects or studies in which no Cooperative Agreement or a Transportation Enhancement Grant Agreement has been fully executed. The Construction phase will be advertised and let out to bid by the Agency's Contract Administration Section.
2. Municipal or Sponsor Managed project will include all LTF Projects for which a Cooperative Agreement or a Transportation Enhancement Grant Agreement has been fully executed. The Municipality or Sponsor will advertise and let the project out to bid