

TOWN	LENGTH IN MILES	HWY. CLASS	CLASS
6	4.29	3	
8	2.40		
9	1.80		
10	0.80		
11	0.36		
13	0.10		
14	1.61		
15	2.60		
17	1.05		
18	0.41	(0.24)	
19	3.90		
20	0.75		
25		(0.40)	
26	0.26	(0.99)	
27		(0.08)	
29	0.35		
30	2.04		
31	1.75		
32	0.14		
33	0.20		
35	0.75		
36	0.19		
38	0.70		
39	0.10		
40	0.08		
41	0.23		
TOTAL	26.86		1.71

LEGAL TRAIL NO.	LENGTH IN MILES LEGAL TRAIL
1	(1.05)
2	(0.79)
3	(0.03)
4	(1.45)
6	(0.84)
7	(0.75)
TOTAL	4.91

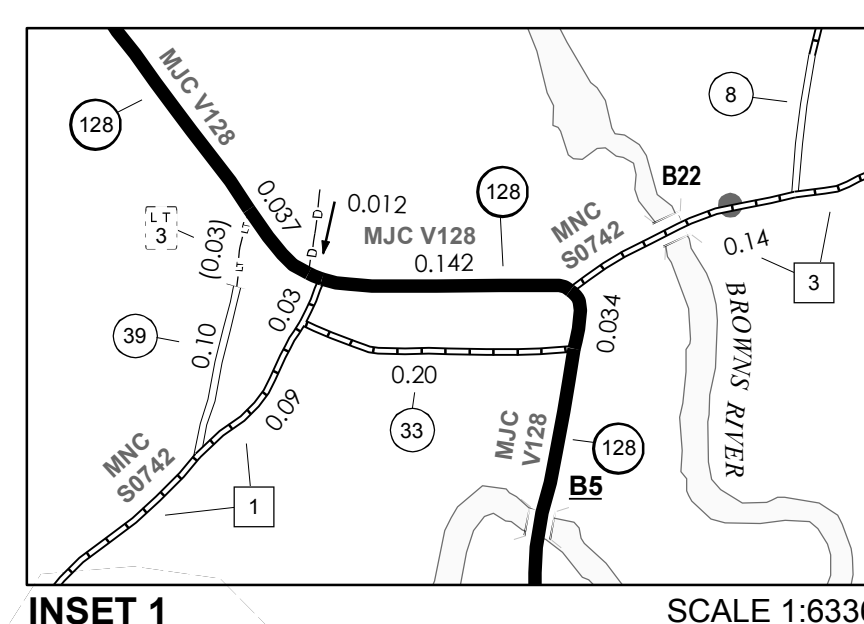
MILEAGE SUMMARY	
CLASS 2	
TH-1	4.970
TH-2	1.830
TH-3	3.130
TH-4	2.550
TOTAL CLASS 2	12.480
CLASS 3	
TOTAL CLASS 3	26.860
TOTAL TOWN	39.340
STATE HIGHWAY	
VT-15	2.822
VT-128	6.552
TOTAL STATE HIGHWAY	9.374
TOTAL STATE	9.374

TOTAL, TRAVELED HIGHWAYS, FEB. 10, 2009: 48.714
(Excludes Class 4 and Legal Trail Mileage)

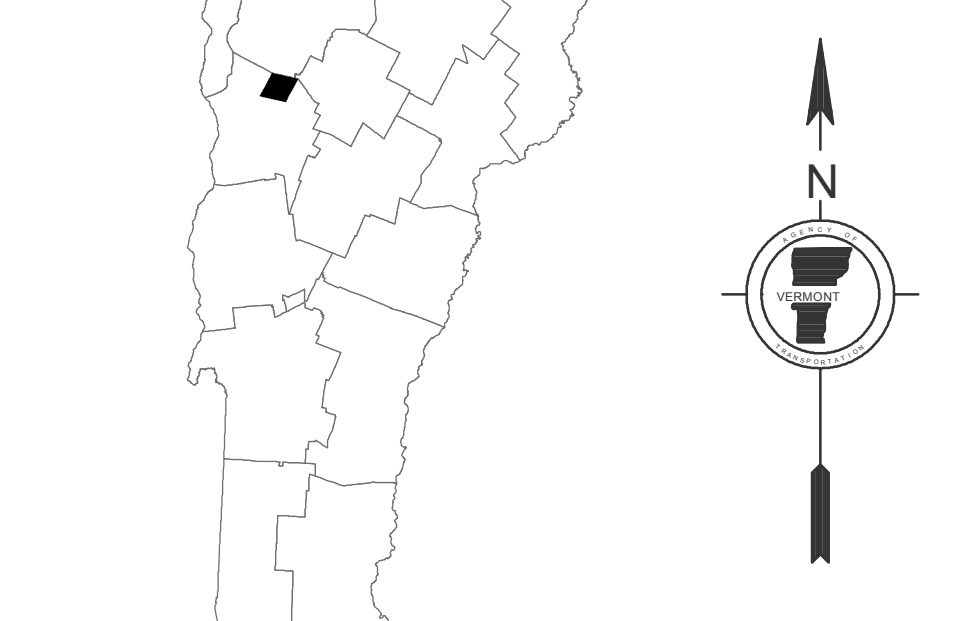
- HIGHWAYS**
 - INTERSTATE
 - U.S. ROUTE
 - STATE ROUTE
 - CLASS 1
 - CLASS 2
 - CLASS 3
 - CLASS 4
 - LEGAL TRAIL
 - INTERSTATE OR DIVIDED HIGHWAY
 - STATE - HARD SURFACE OR PAVED
 - TOWN - HARD SURFACE OR PAVED
 - GRAVEL
 - SOIL OR GRADED AND DRAINED EARTH
 - UNIMPROVED OR PRIMITIVE
 - IMPASSABLE OR UNTRAVELED
 - LEGAL TRAIL
 - DISCONTINUED
 - HIGHWAY CLASS CHANGE
 - RAILROAD
- PUBLIC LAND**
- POLITICAL SUBDIVISIONS**
 - STATE BOUNDARY
 - COUNTY BOUNDARY
 - TOWN BOUNDARY
 - VILLAGE BOUNDARY
 - URBAN COMPACT BOUNDARY
 - WATER BODIES
 - STREAM OR BROOK
- BRIDGE OR CULVERT**
 - BRIDGE OR CULVERT GREATER THAN 20'
 - BRIDGE OR CULVERT 6' - 20'
 - TOWN SHORT STRUCTURE
 - B34 / C34 STATE BRIDGE OR CULVERT IDENTIFIER
 - B34 / C34 TOWN BRIDGE OR CULVERT IDENTIFIER
- FEDERAL CLASSIFICATION IDENTIFIER**
 - FAU URBAN ARTERIAL OR COLLECTOR
 - MA MINOR ARTERIAL
 - MJC MAJOR COLLECTOR
 - MNC MINOR COLLECTOR
 - PA PRINCIPAL ARTERIAL

STRUCTURES - SURFACE WATER NOTE:
STRUCTURES: Town short structures (bridges or culverts from 4-feet to less than 20-feet) are drawn from the Vermont Online Bridge & Culvert Inventory Tool (VOBCIT) database.
NOTE: Town shorts are not consistently tagged within VOBCIT.
The surface waters are from the Vermont Hydrological Dataset (VHD). Only the named streams are shown.

DISCLAIMER:
The untraveled highways (laid-out town highways), discontinued highways, and legal trails shown hereon are those of which the Agency of Transportation has record; others may exist.
Highway and bridge data by the Agency of Transportation. All other data from the Vermont Center for Geographic Information.



0 0.1 0.2 Miles



VERMONT
GENERAL HIGHWAY MAP
Town of Westford

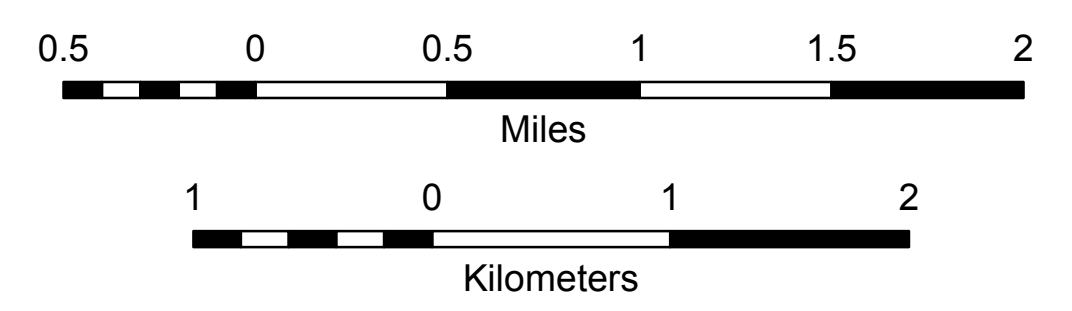
CHITTENDEN COUNTY

Transportation District #8

Prepared by the
Vermont Agency of Transportation
Division of Planning, Outreach
and Community Affairs
in cooperation with
U.S. Department of Transportation
Federal Highway Administration

Mileage as of February 10, 2009
Map prepared August 11, 2009

SCALE 1:31,680



Vermont State Plane Coordinate System
North American Datum of 1983
SPCS_Zone_Identifier: 4400
Geodetic Reference System 80
4,000-meter grid, Easting - Northing