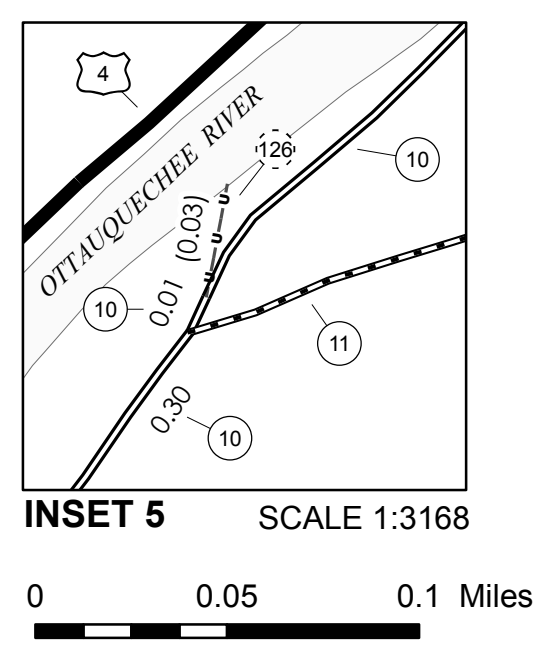
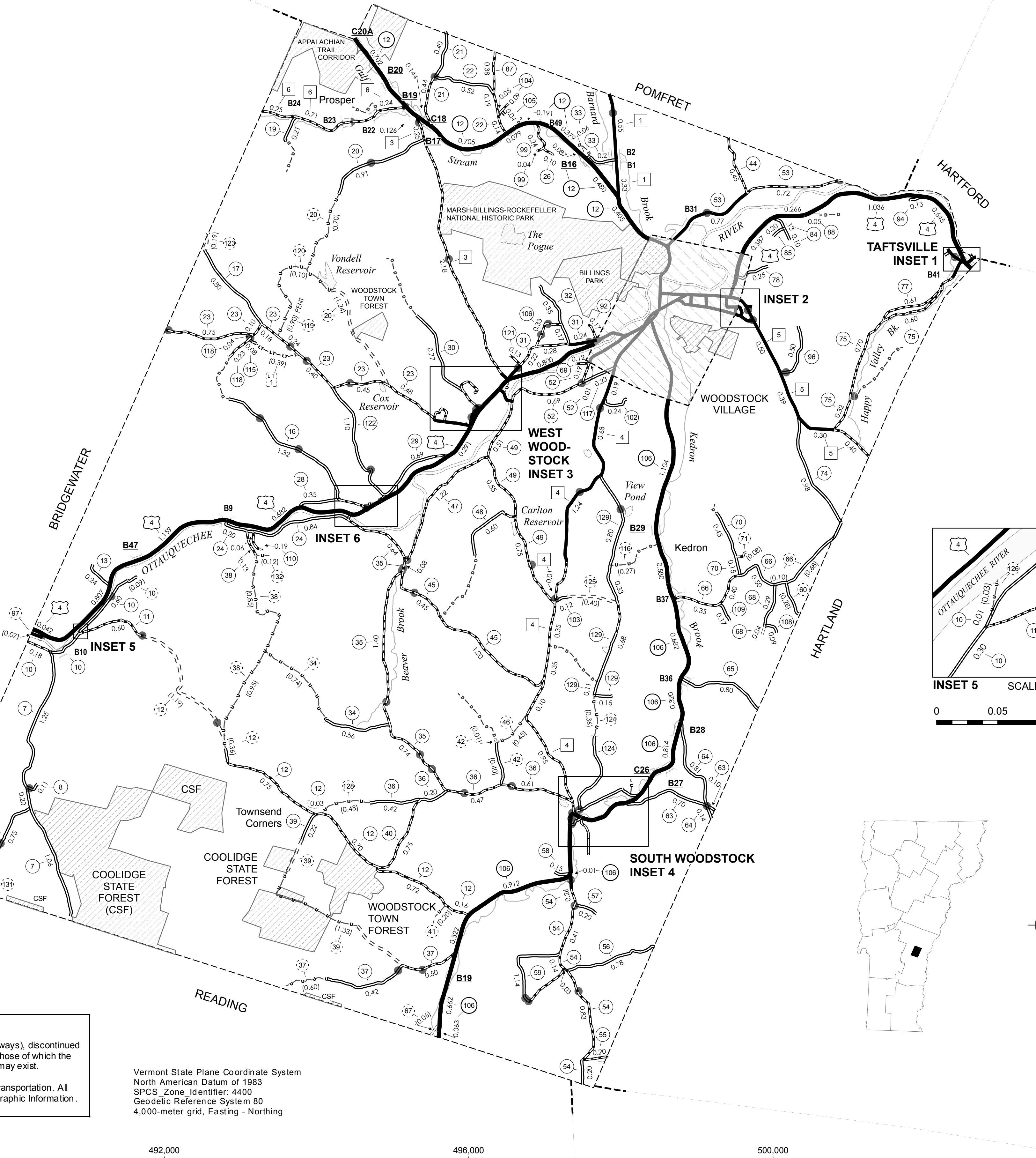
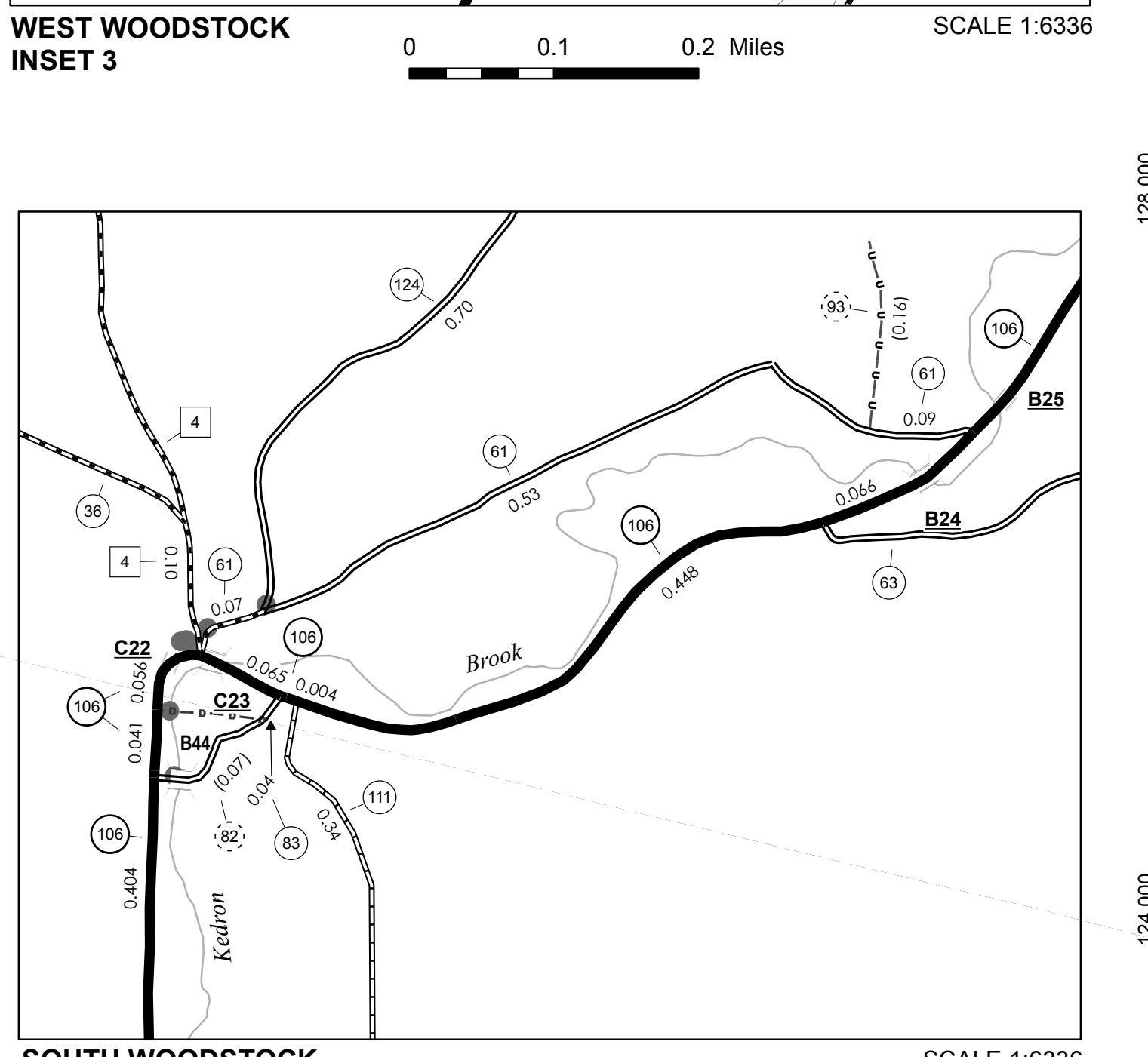
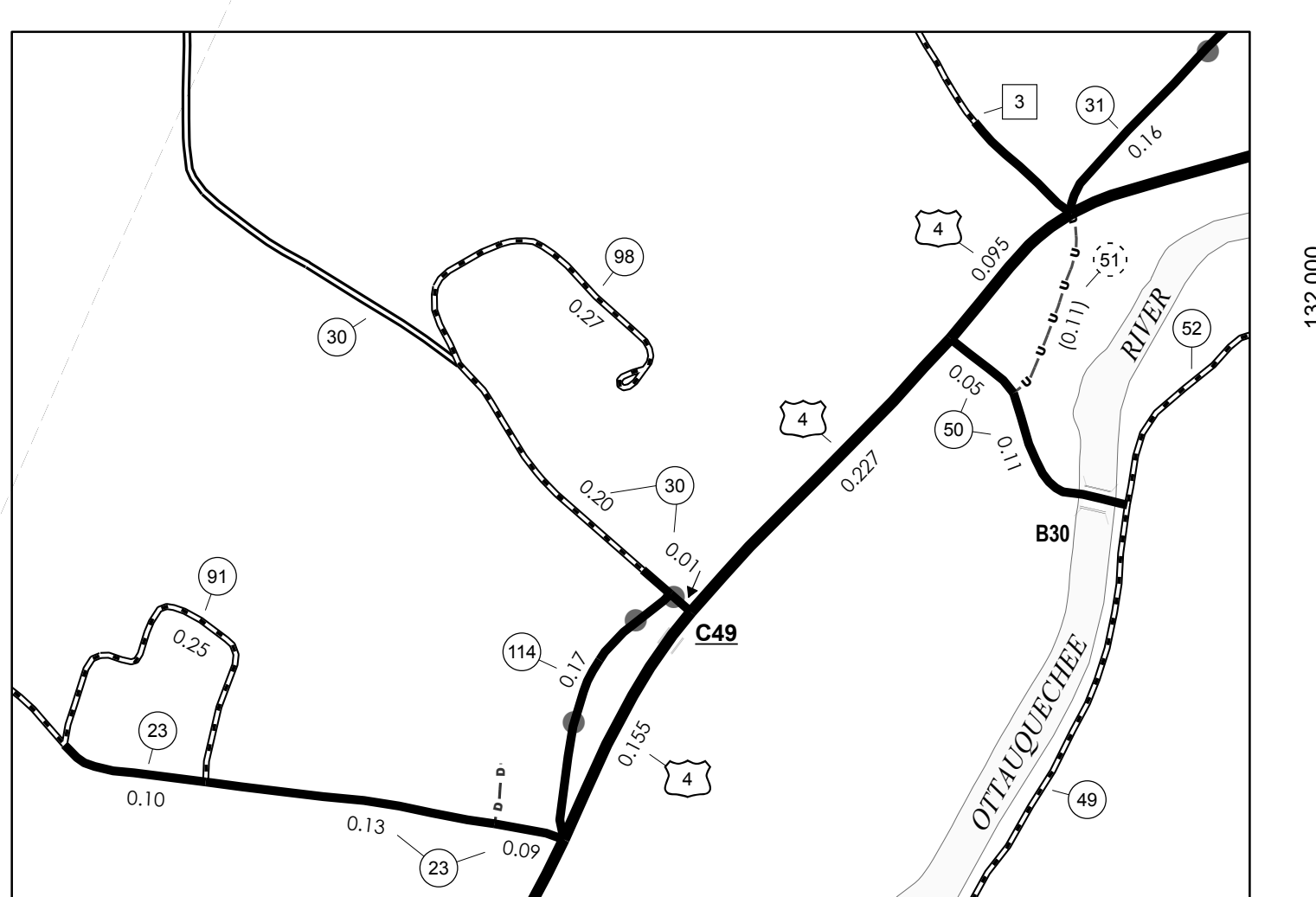
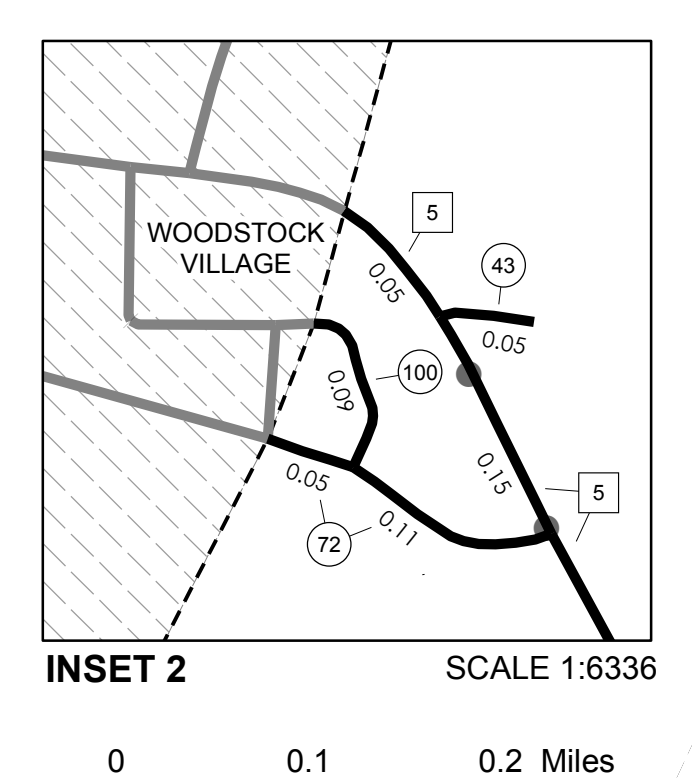
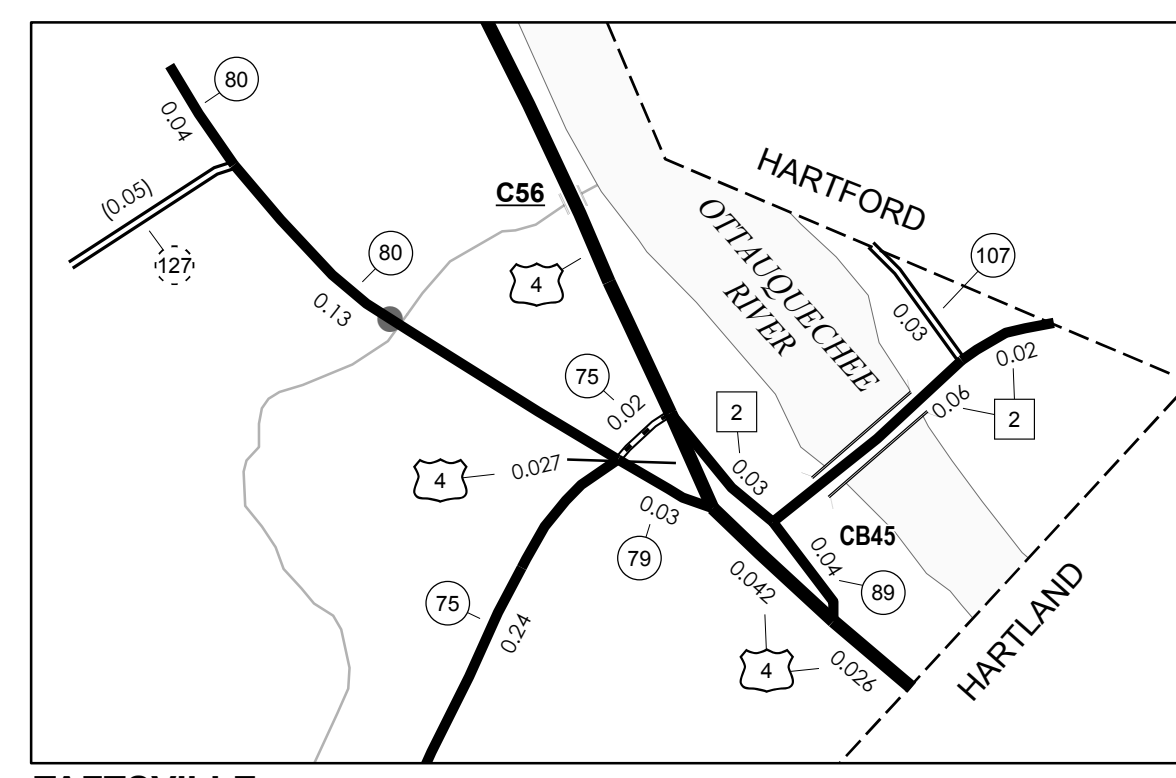
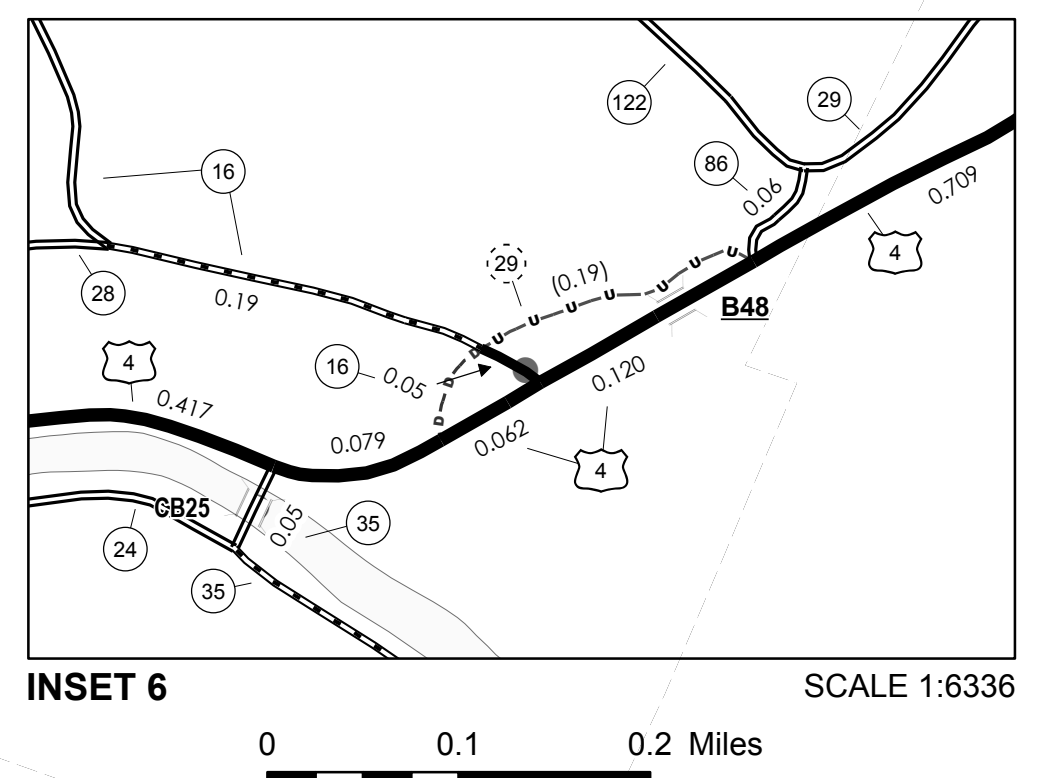


| TOWN HWY. NO. | LENGTH IN MILES CLASS 3 | LENGTH IN MILES CLASS 4 | | | | | |
|---------------|-------------------------|-------------------------|--------------|--------------|--------|--------------|------|
| 7 | 2.51 | | 50 | 0.16 | | 92 | 0.17 |
| 8 | 0.11 | | 51 | 0.11 | (0.11) | 93 | 0.17 |
| 10 | 1.09 | (0.09) | 52 | 0.89 | | 94 | 0.13 |
| 11 | 0.60 | | 53 | 1.49 | | 96 | 0.50 |
| 12 | 2.36 | (1.55) | 54 | 1.87 | | 97 | 0.07 |
| 13 | 0.24 | | 55 | 0.20 | | 98 | 0.27 |
| 16 | 1.56 | | 56 | 0.78 | | 99 | 0.28 |
| 17 | 0.80 | | 57 | 0.20 | | 100 | 0.09 |
| 19 | 0.21 | | 58 | 0.15 | | 102 | 0.24 |
| 20 | 0.91 | (1.94) | 59 | 1.14 | | 103 | 0.12 |
| 21 | 0.84 | | 60 | | (0.28) | 104 | 0.14 |
| 22 | 0.85 | | 61 | 0.69 | | 105 | 0.04 |
| 23 | 2.92 | | 63 | 0.80 | | 106 | 0.33 |
| 24 | 1.10 | | 64 | 0.95 | | 107 | 0.03 |
| 26 | 0.10 | | 65 | 0.80 | | 108 | 0.09 |
| 28 | 0.35 | | 66 | 1.25 | (0.78) | 109 | 0.17 |
| 29 | 0.69 | (0.19) | 67 | | (0.06) | 110 | 0.19 |
| 30 | 0.98 | | 68 | 0.33 | | 111 | 0.34 |
| 31 | 0.90 | | 69 | 0.12 | | 114 | 0.17 |
| 32 | 0.52 | | 70 | 0.60 | | 115 | 0.08 |
| 33 | 0.27 | | 71 | | (0.08) | 116 | 0.27 |
| 34 | 0.56 | (0.74) | 72 | 0.16 | | 117 | 0.23 |
| 35 | 2.91 | | 74 | 0.98 | | 118 | 0.27 |
| 36 | 1.70 | | 75 | 1.88 | | 119 | 0.90 |
| 37 | 0.92 | (0.60) | 77 | 0.61 | | 120 | 0.10 |
| 38 | 0.13 | (1.80) | 78 | 0.25 | | 121 | 0.13 |
| 39 | 0.22 | (1.33) | 79 | 0.03 | | 122 | 1.10 |
| 40 | 0.75 | | 80 | 0.17 | | 123 | 0.19 |
| 41 | | (0.20) | 82 | | (0.07) | 124 | 0.70 |
| 42 | | (0.41) | 83 | 0.04 | | 125 | 0.40 |
| 43 | 0.05 | | 84 | 0.23 | | 126 | 0.03 |
| 44 | 0.45 | | 85 | 0.20 | | 127 | 0.05 |
| 45 | 1.65 | | 86 | 0.06 | | 128 | 0.48 |
| 46 | | (0.45) | 87 | 0.38 | | 129 | 2.07 |
| 47 | 1.22 | | 88 | 0.05 | | 130 | 1.09 |
| 48 | 0.60 | | 89 | 0.04 | | 131 | 0.16 |
| 49 | 1.81 | | 91 | 0.25 | | 132 | 0.12 |
| | | | TOTAL | 59.60 | | 14.15 | |

| CLASS | LENGTH IN MILES | LEGAL TRAIL NO. | LENGTH IN MILES |
|---------------------|-----------------|-----------------|-----------------|
| CLASS 2 | | | |
| TH-1 | 0.880 | | |
| TH-2 | 0.110 | | |
| TH-3 | 2.430 | | |
| TH-4 | 3.970 | | |
| TH-5 | 1.790 | | |
| TH-6 | 1.200 | | |
| TOTAL CLASS 2 | 10.380 | | |
| CLASS 3 | | | |
| TOTAL CLASS 3 | 59.600 | | |
| TOTAL TOWN | 69.980 | | |
| STATE HIGHWAY | | | |
| VT-12 | 3.298 | | |
| VT-106 | 6.553 | | |
| TOTAL STATE HIGHWAY | 9.851 | | |
| US HIGHWAY | | | |
| US-4 | 8.074 | | |
| TOTAL US HIGHWAY | 8.074 | | |
| TOTAL STATE | 17.925 | | |

TOTAL, TRAVELED HIGHWAYS, FEB. 10, 2010: 87.905
 (Excludes Class 4 and Legal Trail Mileage)



- HIGHWAYS**
 - INTERSTATE
 - U.S. ROUTE
 - STATE ROUTE
 - CLASS 1
 - CLASS 2
 - CLASS 3
 - CLASS 4
 - LEGAL TRAIL
 - INTERSTATE OR DIVIDED HIGHWAY
 - STATE - HARD SURFACE OR PAVED
 - TOWN - HARD SURFACE OR PAVED
 - GRAVEL
 - SOIL OR GRADED AND DRAINED EARTH
 - UNIMPROVED OR PRIMITIVE
 - IMPASSABLE OR UNTRAVELED
 - LEGAL TRAIL
 - DISCONTINUED
 - HIGHWAY CLASS CHANGE
 - RAILROAD
- PUBLIC LAND**
 - POLITICAL SUBDIVISIONS
 - STATE BOUNDARY
 - COUNTY BOUNDARY
 - TOWN BOUNDARY
 - VILLAGE BOUNDARY
 - URBAN COMPACT BOUNDARY
 - WATER BODIES
 - STREAM OR BROOK
 - BRIDGE OR CULVERT
 - BRIDGE OR CULVERT GREATER THAN 20'
 - BRIDGE OR CULVERT 6' - 20'
 - TOWN SHORT STRUCTURE
 - BRIDGE OR CULVERT IDENTIFIER
 - B34 / C34 STATE BRIDGE OR CULVERT IDENTIFIER
 - B34 / C34 TOWN BRIDGE OR CULVERT IDENTIFIER
 - FEDERAL CLASSIFICATION IDENTIFIER
 - FAU URBAN ARTERIAL OR COLLECTOR
 - MA MINOR ARTERIAL
 - MJC MAJOR COLLECTOR
 - MNC MINOR COLLECTOR
 - PA PRINCIPAL ARTERIAL

STRUCTURES - SURFACE WATER NOTE:
 STRUCTURES: Town short structures (bridges or culverts from 6-feet to less than 20-feet) are drawn from the Vermont Online Bridge & Culvert Inventory Tool (VOBCIT) database.
 NOTE: Town shorts are not consistently tagged within VOBCIT.
 SURFACE WATERS: The surface waters are from the Vermont Hydrological Dataset (VHD). Only the named streams are shown.

DISCLAIMER:
 The untraveled highways (laid-out town highways), discontinued highways, and legal trails shown hereon are those of which the Agency of Transportation has record; others may exist.
 Highway and bridge data by the Agency of Transportation. All other data from the Vermont Center for Geographic Information.

Vermont State Plane Coordinate System
 North American Datum of 1983
 SPCS Zone Identifier: 4400
 Geodetic Reference System 80
 4,000-meter grid, Easting - Northing

VERMONT GENERAL HIGHWAY MAP
Town of Woodstock

WINDSOR COUNTY
 Transportation District #4
 Prepared by the
 Vermont Agency of Transportation
 Division of Planning, Outreach
 and Community Affairs
 in cooperation with
 U.S. Department of Transportation
 Federal Highway Administration

