

TOWN HWY. NO.	CLASS 3	CLASS 4	LENGTH IN MILES	LEGAL TRAIL NO.	LENGTH IN MILES
5		(0.59)	54 0.36	308	0.06
7		(0.21)	55 0.18	310	0.18
8	0.93		56 0.59	312	0.03
9	1.03		59 3.46	314	0.04
10	0.10		60 0.55	316	0.09
11	0.76		61 0.81	318	0.77
12	0.17		62 0.11	320	(0.25)
13	0.56		63 0.16	322	0.19
14	0.12		64 0.18	324	0.08
15	1.05		65 0.15	326	0.03
16	0.10		66 0.54	328	0.12
17	0.07		67 1.06	330	0.05
18		(0.19)	68 3.53	332	0.14
19	0.14		69 0.17	334	0.07
20		(0.18)	70 0.10	336	0.13
22	0.05		71 3.76	338	0.27
23	0.08		72 2.65	340	0.05
24	1.16		73 0.51	342	0.16
25	0.17		74 2.12	344	0.35
26	3.48		75 0.45	346	0.10
28	2.42		76 0.14	348	0.30
29	0.50		78 2.29	354	0.12
30	1.60		79 0.79	356	0.12
31	1.07		80 0.10	358	0.36
32	0.10		81 0.24	360	0.05
33	1.54		83 0.21	362	0.31
34	0.40		84 0.05	364	0.19
35	0.25		85	366	0.53
36	0.67	(0.08)	86	368	0.25
37	0.10	(0.15)	87	372	0.18
38	0.03		89	374	0.27
39	0.08		89	376	0.17
40	0.64	(0.10)	90	378	0.07
41	0.30		91	380	0.04
42	0.75		92	382	0.23
43	1.19		94	384	0.18
44	1.22		95	386	0.54
45	0.83		97	390	0.10
46	0.59		98	394	0.17
47	0.40		99	396	0.04
48	4.02		100	398	0.16
49	0.27		300	400	0.14
50	0.61		302	404	0.04
51	1.70		304	406	0.81
52	2.51		305	408	0.07
53	1.48		306	410	0.12
			TOTAL	72.62	2.49

LEGAL TRAIL NO.	LENGTH IN MILES
1	(0.97)
2	(0.62)
3	(0.05)
5	(0.40)
6	(1.42)
7	(1.02)
TOTAL	4.48

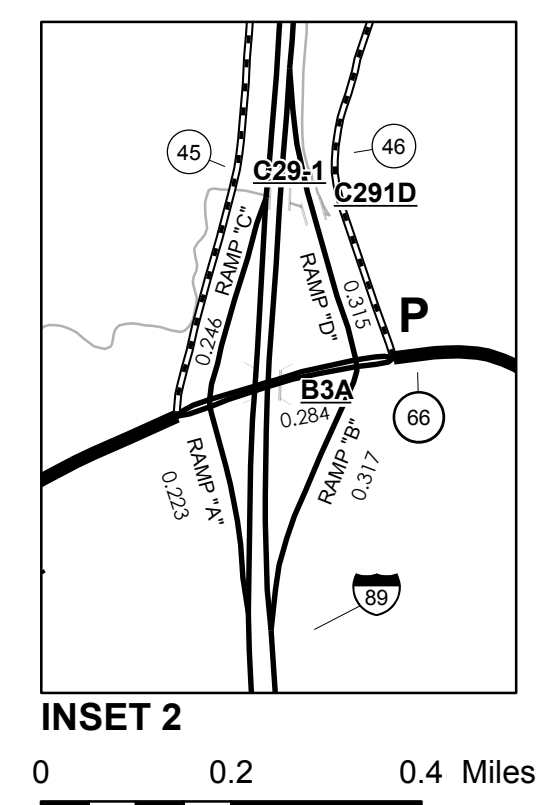
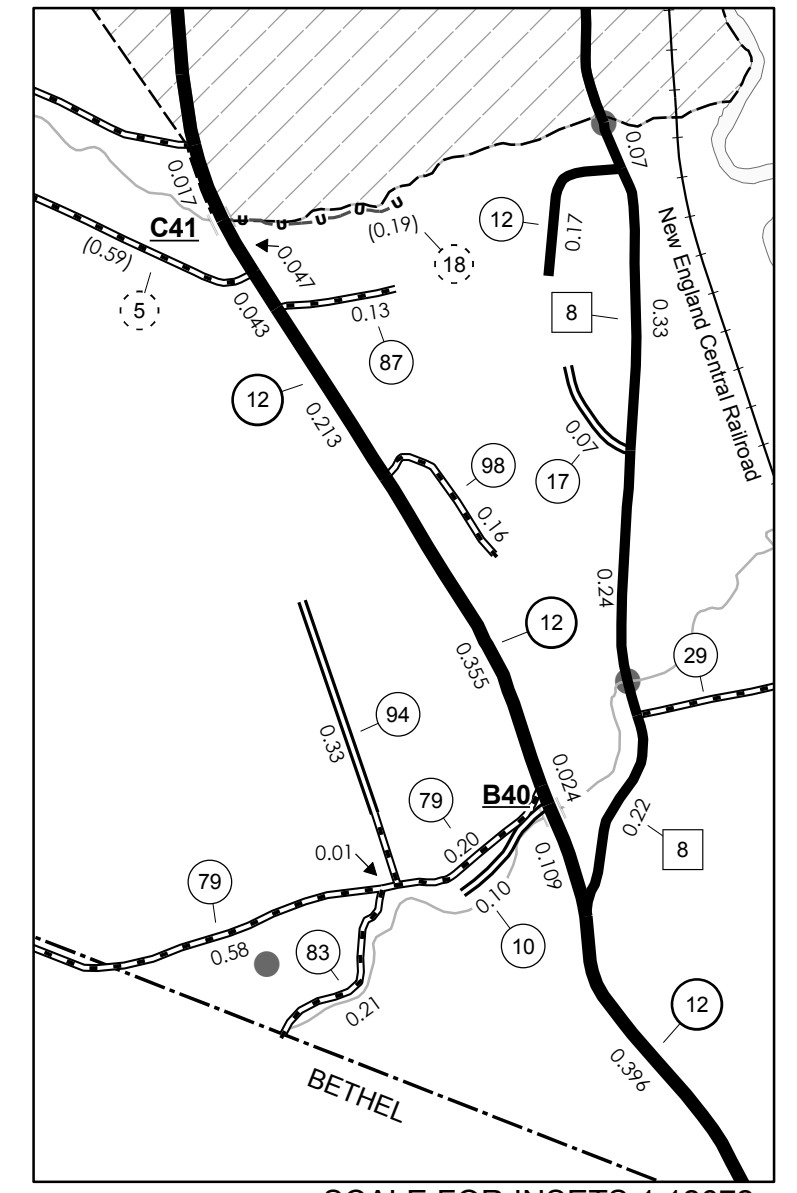
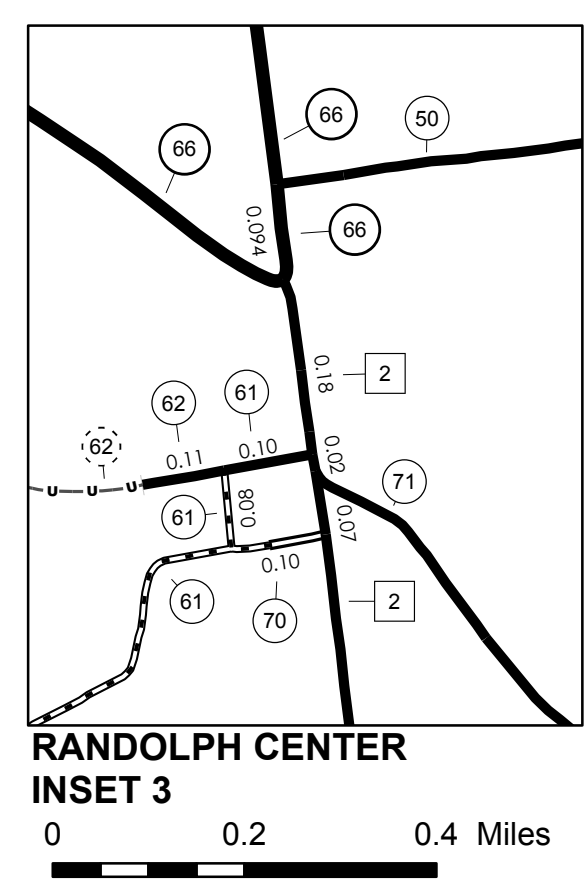
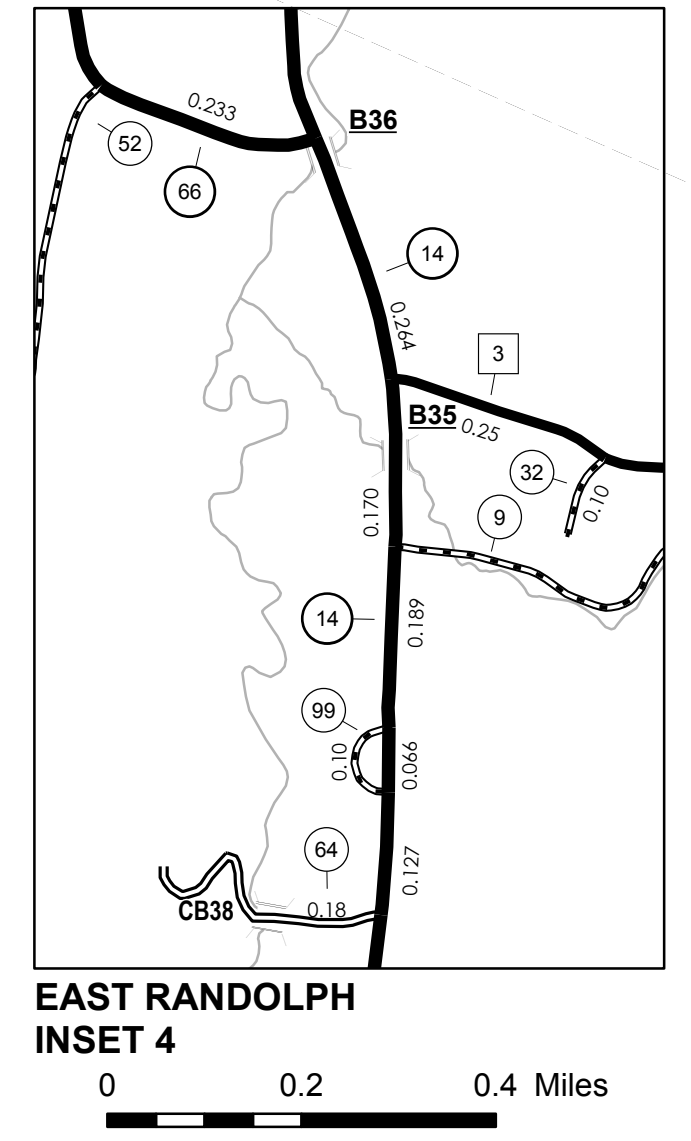
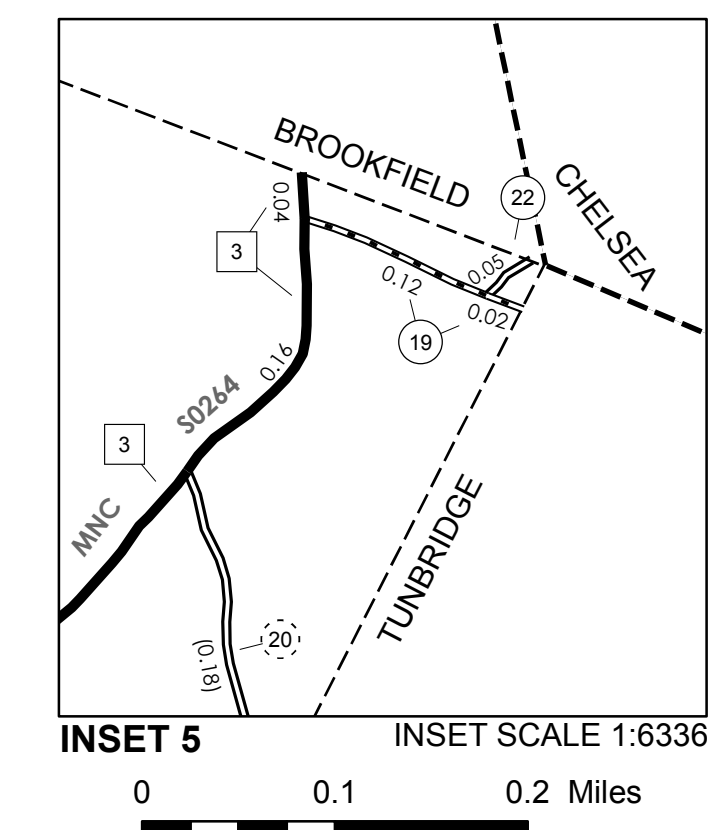
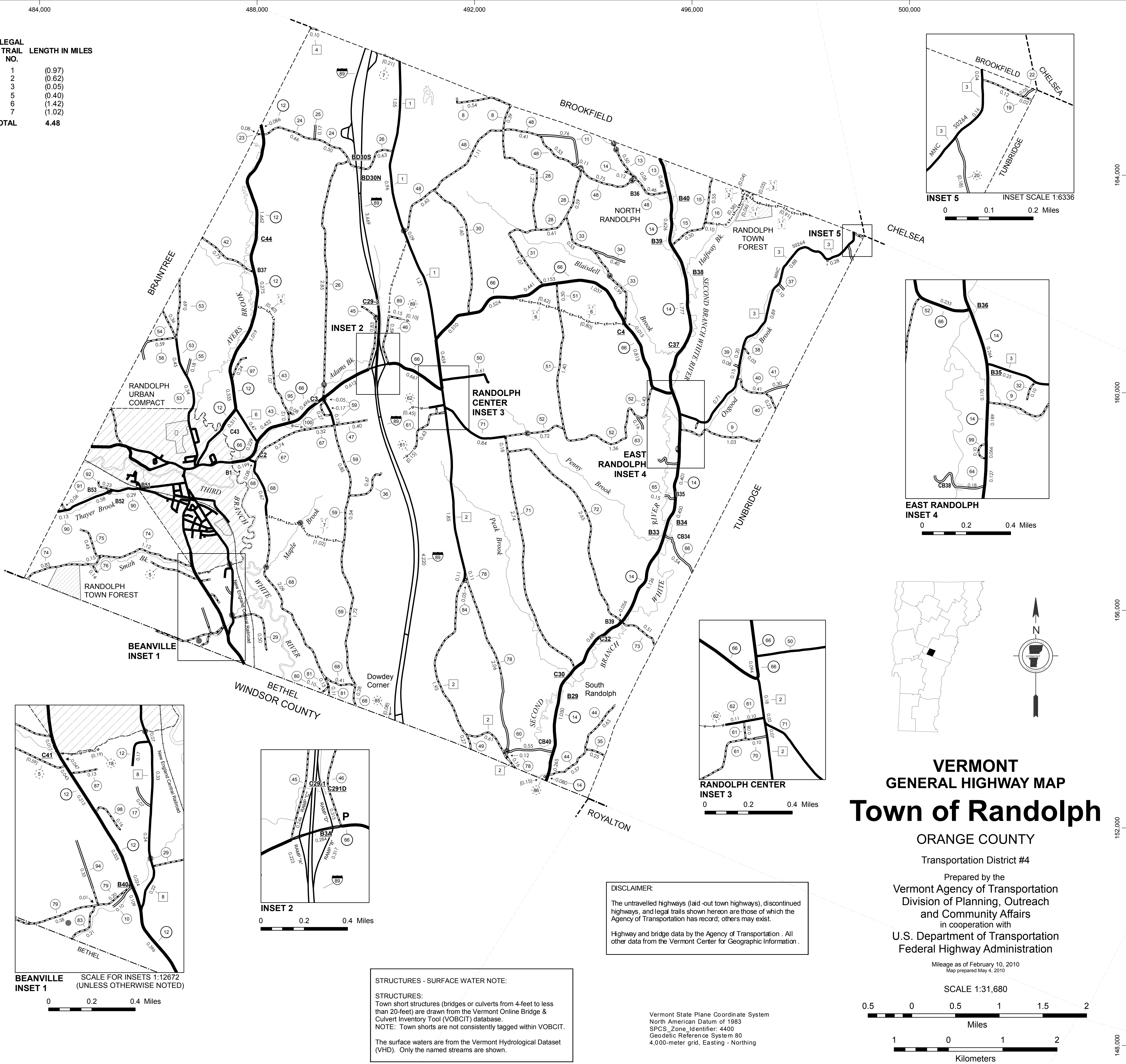
* This portion of town highway is Class 3, but is functionally Class 4

MILEAGE SUMMARY

CLASS	LENGTH IN MILES	TOTAL CLASS
CLASS 1	1.603	2460
TH-1	0.398	
TH-2	0.429	
TH-3	0.030	
TH-4	0.030	
TOTAL CLASS 1	2460	
CLASS 2	3.310	14,670
TH-1	4.930	
TH-2	3.560	
TH-3	0.100	
TH-4	0.470	
TH-6	0.450	
TH-7	1.850	
TH-8	1.850	
TOTAL CLASS 2	14,670	
CLASS 3	72.620	89,750
TOTAL CLASS 3	72,620	
TOTAL TOWN	89,750	
STATE HIGHWAY		20,958
VT-12	5.155	
VT-12A	0.877	
VT-14	7.734	
VT-66	7.192	
TOTAL STATE HIGHWAY	20,958	
TOTAL STATE	20,958	
INTERSTATE		7,889
I-89	7,889	
TOTAL INTERSTATE	7,889	
INTERSTATE - Ramp		1,101
I-89	1,101	
TOTAL INTERSTATE - Ramp	1,101	
TOTAL INTERSTATE	8,990	

TOTAL, TRAVELED HIGHWAYS, FEB. 10, 2010: 119,698
(Excludes Class 4 and Legal Trail Mileage)

- HIGHWAYS**
- INTERSTATE
 - U.S. ROUTE
 - STATE ROUTE
 - CLASS 1
 - CLASS 2
 - CLASS 3
 - CLASS 4
 - LEGAL TRAIL
 - INTERSTATE OR DIVIDED HIGHWAY
 - STATE - HARD SURFACE OR PAVED
 - TOWN - HARD SURFACE OR PAVED
 - GRAVEL
 - SOIL OR GRADED AND DRAINED EARTH
 - UNIMPROVED OR PRIMITIVE
 - IMPASSABLE OR UNTRAVELED
 - LEGAL TRAIL
 - DISCONTINUED
 - HIGHWAY CLASS CHANGE
 - RAILROAD
- PUBLIC LAND**
- POLITICAL SUBDIVISIONS**
- STATE BOUNDARY
 - COUNTY BOUNDARY
 - TOWN BOUNDARY
 - VILLAGE BOUNDARY
 - URBAN COMPACT BOUNDARY
 - WATER BODIES
 - STREAM OR BROOK
- BRIDGE OR CULVERT**
- BRIDGE OR CULVERT GREATER THAN 20'
 - BRIDGE OR CULVERT 6' - 20'
 - TOWN SHORT STRUCTURE
- B34 / C34 STATE BRIDGE OR CULVERT IDENTIFIER**
- B34 / C34 TOWN BRIDGE OR CULVERT IDENTIFIER**
- P PARK AND RIDE**
- FEDERAL CLASSIFICATION IDENTIFIER**
- FAU URBAN ARTERIAL OR COLLECTOR
 - MA MINOR ARTERIAL
 - MJC MAJOR COLLECTOR
 - MNC MINOR COLLECTOR
 - PA PRINCIPAL ARTERIAL



DISCLAIMER:
The untraveled highways (laid-out town highways), discontinued highways, and legal trails shown hereon are those of which the Agency of Transportation has record; others may exist.
Highway and bridge data by the Agency of Transportation. All other data from the Vermont Center for Geographic Information.

STRUCTURES - SURFACE WATER NOTE:
STRUCTURES: Town short structures (bridges or culverts from 4-feet to less than 20-feet) are drawn from the Vermont Online Bridge & Culvert Inventory Tool (VOBCIT) database.
NOTE: Town shorts are not consistently tagged within VOBCIT.
The surface waters are from the Vermont Hydrological Dataset (VHD). Only the named streams are shown.

VERMONT GENERAL HIGHWAY MAP
Town of Randolph
ORANGE COUNTY
Transportation District #4
Prepared by the Vermont Agency of Transportation Division of Planning, Outreach and Community Affairs in cooperation with U.S. Department of Transportation Federal Highway Administration
Mileage as of February 10, 2010
Map prepared May 4, 2010
SCALE 1:31,680
0.5 0 0.5 1 1.5 2 Miles
1 0 1 2 Kilometers