

INSET 1

SCALE 1:12000 -- (scale for insets unless otherwise noted)

TOWN HWY. NO.	LENGTH IN MILES CLASS 3	LENGTH IN MILES CLASS 4	TOTAL
9	0.85	74	0.06
10	1.03	75	0.12
11	0.60	77	0.43
12	3.05	77	0.28
13	0.60	78	0.04
14	0.35	79	0.19
15	0.40	80	0.25
16	1.31	81	0.56
17	0.80	82	0.06
18	0.83	83	0.26
18	0.11	84	0.13
19	0.11	85	0.12
20	1.37	86	0.28
21	1.10	87	0.77
22	0.13	88	0.10
24	0.13	89	0.10
25	1.05	90	0.38
26	0.38	91	0.45
27	1.80	92	0.12
28	0.31	93	0.11
30	1.85	94	0.42
31	2.00	95	0.57
32	0.48	96	0.11
34	0.80	97	0.38
35	1.08	98	0.10
36	0.57	99	0.43
37	0.98	100	0.19
39	0.20	101	0.10
40	0.50	102	0.18
41	0.05	103	0.31
42	0.77	104	0.31
43	0.55	105	0.15
44	0.14	106	0.17
45	0.26	107	0.21
46	0.38	108	0.24
47	0.22	109	0.09
48	0.53	110	0.17
49	0.16	111	0.23
50	0.05	112	0.12
51	0.39	113	0.21
52	0.58	114	0.92
53	0.57	115	0.38
54	0.26	116	0.13
55	0.19	117	0.20
56	0.90	118	0.50
57	1.40	119	0.09
58	1.62	120	0.05
59	0.34	121	0.09
60	0.14	122	0.15
61	0.66	123	0.25
61	0.04	124	0.10
62	0.05	125	0.10
63	0.36	126	0.42
64	0.35	127	0.20
65	0.21	128	0.10
66	0.19	129	0.18
67	0.44	130	0.18
68	0.30	131	0.07
69	0.18	132	0.07
70	0.25	133	0.13
71	0.37	134	0.30
72	0.09	135	0.65
73	0.38	136	0.06
TOTAL	66.71	1.27	0.48

* This portion of town highway is Class 3, but is functionally Class 4

LEGAL TRAIL NO.	LENGTH IN MILES	TOTAL
1	(0.39)	
2	(0.09)	
TOTAL	0.48	

- HIGHWAYS**
 - INTERSTATE
 - U.S. ROUTE
 - STATE ROUTE
 - CLASS 1
 - CLASS 2
 - CLASS 3
 - CLASS 4
 - LEGAL TRAIL
 - INTERSTATE OR DIVIDED HIGHWAY
 - STATE - HARD SURFACE OR PAVED
 - TOWN - HARD SURFACE OR PAVED
 - GRAVEL
 - SOIL OR GRADED AND DRAINED EARTH
 - UNIMPROVED OR PRIMITIVE
 - IMPASSABLE OR UNTRAVELED
 - LEGAL TRAIL
 - DISCONTINUED
 - HIGHWAY CLASS CHANGE
 - RAILROAD
- PUBLIC LAND**
- POLITICAL SUBDIVISIONS**
 - STATE BOUNDARY
 - COUNTY BOUNDARY
 - TOWN BOUNDARY
 - VILLAGE BOUNDARY
 - URBAN CONTACT BOUNDARY
 - WATER BODIES
 - STREAM OR BROOK
 - BRIDGE OR CULVERT
 - BRIDGE OR CULVERT GREATER THAN 20'
 - BRIDGE OR CULVERT 6' - 20'
 - TOWN SHORT STRUCTURE
 - STATE BRIDGE OR CULVERT IDENTIFIER
 - TOWN BRIDGE OR CULVERT IDENTIFIER
 - PARK AND RIDE
- FEDERAL CLASSIFICATION IDENTIFIER**
 - FAU URBAN ARTERIAL OR COLLECTOR
 - MA MINOR ARTERIAL
 - MAJ MAJOR COLLECTOR
 - MIC MINOR COLLECTOR
 - PA PRINCIPAL ARTERIAL

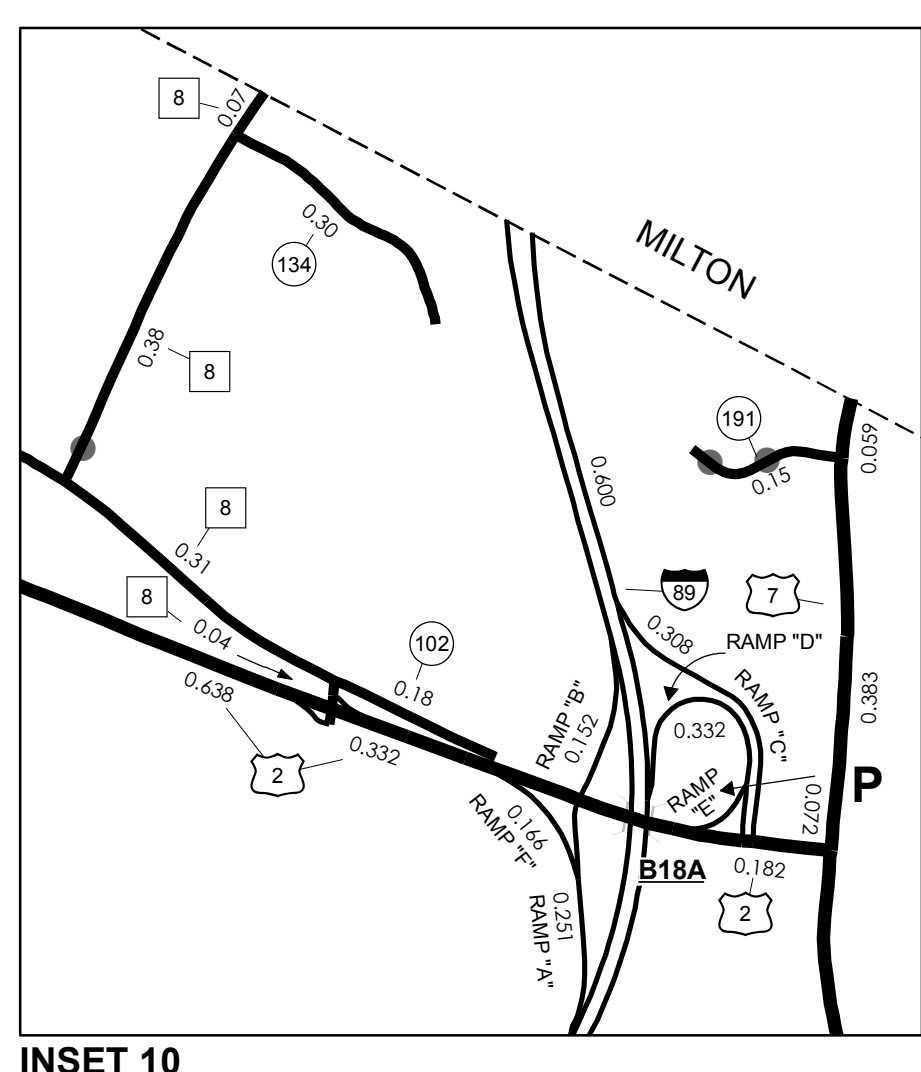
STRUCTURES - SURFACE WATER NOTE:
 Town short structures (bridges or culverts from 4-feet to less than 20-feet) are drawn from the Vermont Online Bridge & Culvert Inventory Tool (VOBCIT) database.
 NOTE: Town shorts are not consistently tagged within VOBCIT.
 The surface waters are from the Vermont Hydrological Dataset (VHD). Only the named streams are shown.

DISCLAIMER:
 The untraveled highways (laid-out town highways), discontinued highways, and legal trails shown hereon are those of which the Agency of Transportation has record; others may exist.
 Highway and bridge data by the Agency of Transportation. All other data from the Vermont Center for Geographic Information.

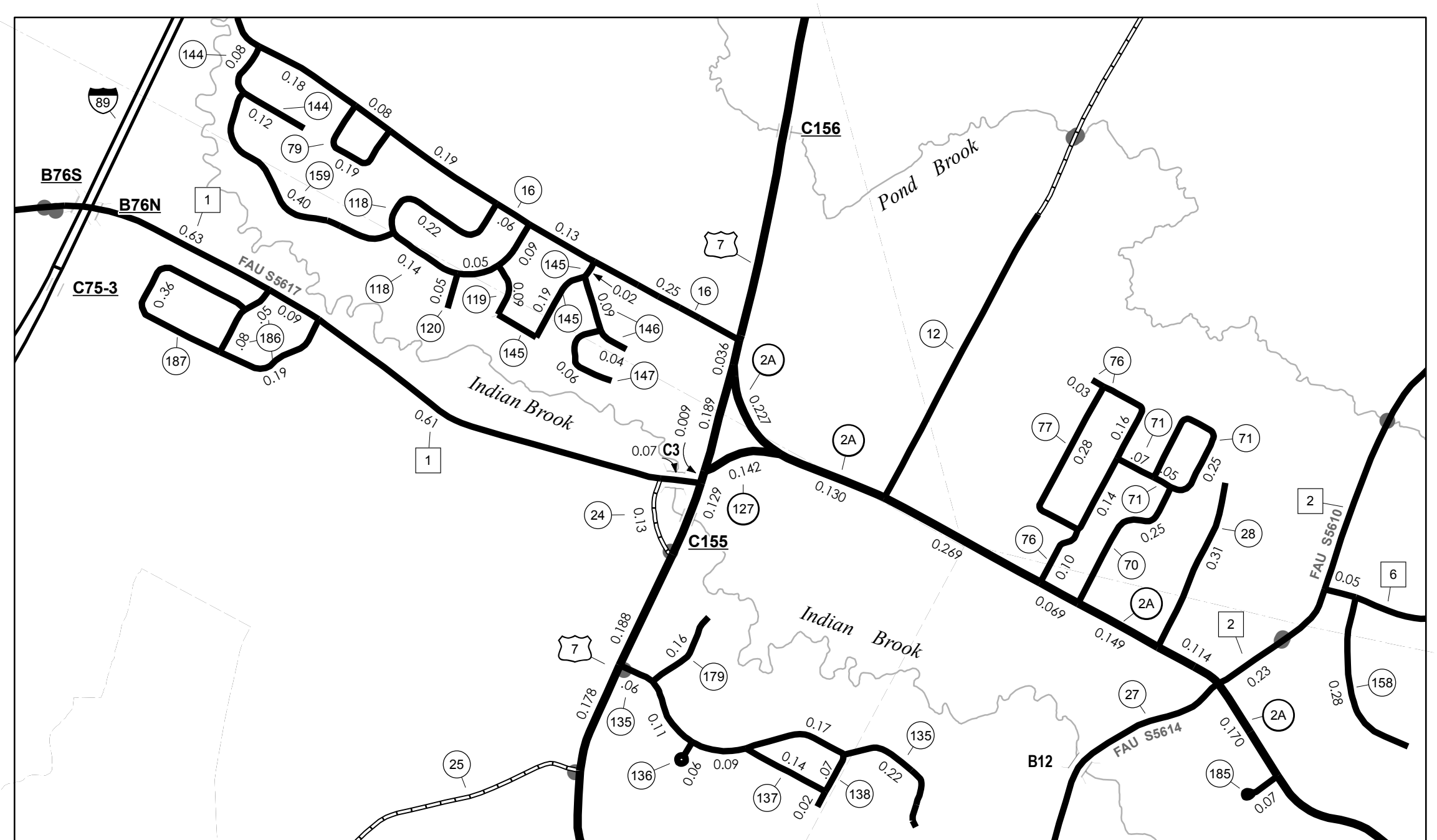
MILEAGE SUMMARY

CLASS 2	
TH-1	6.680
TH-2	2.960
TH-3	3.440
TH-4	0.210
TH-5	0.750
TH-6	0.750
TH-7	2.030
TH-8	0.800
TH-9	2.200
TH-10	1.300
TOTAL CLASS 2	21.120
CLASS 3	
TOTAL CLASS 3	66.710
TOTAL TOWN	87.830
STATE HIGHWAY	
VT-2A	2.431
VT-15	1.361
VT-127	0.142
TOTAL STATE HIGHWAY	3.934
US HIGHWAY	
US-2	2.196
US-7	6.960
TOTAL US HIGHWAY	9.156
TOTAL STATE	13.090
INTERSTATE	
I-89	7.568
TOTAL INTERSTATE	7.568
INTERSTATE - Ramp	
I-89	2.206
TOTAL INTERSTATE - Ramp	2.206
TOTAL INTERSTATE	9.774

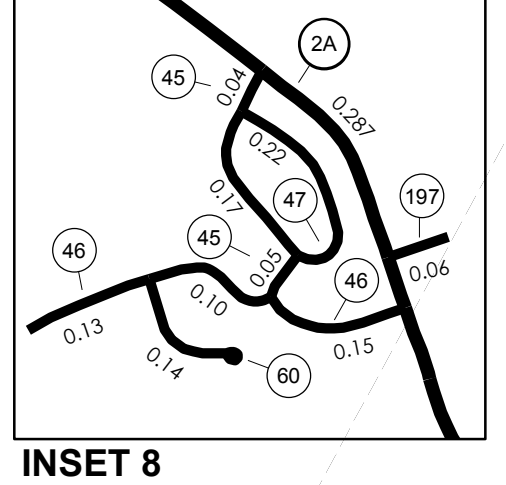
TOTAL, TRAVELED HIGHWAYS, FEB. 10, 2009: 110.694
 (Excludes Class 4 and Legal Trail Mileage)



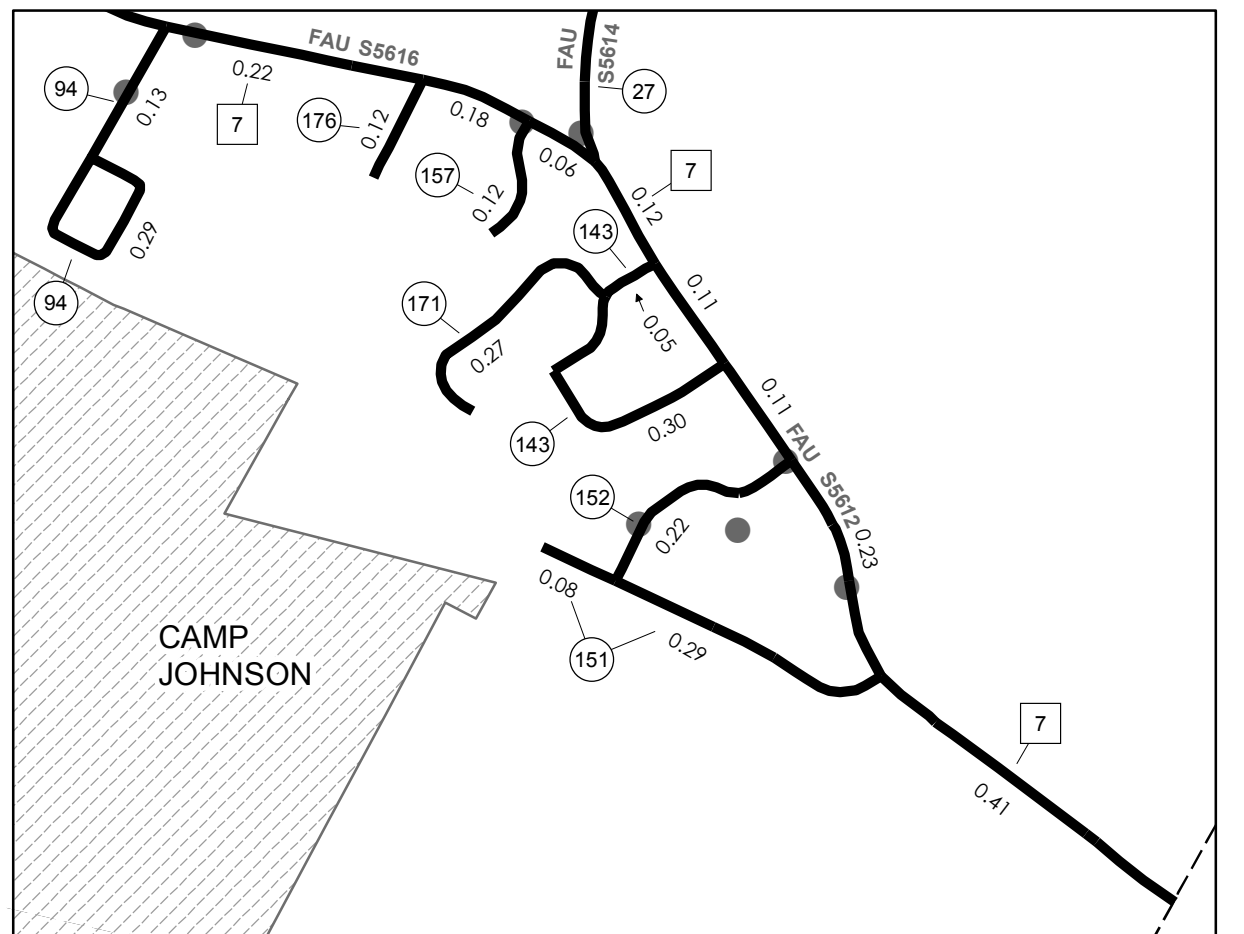
INSET 10



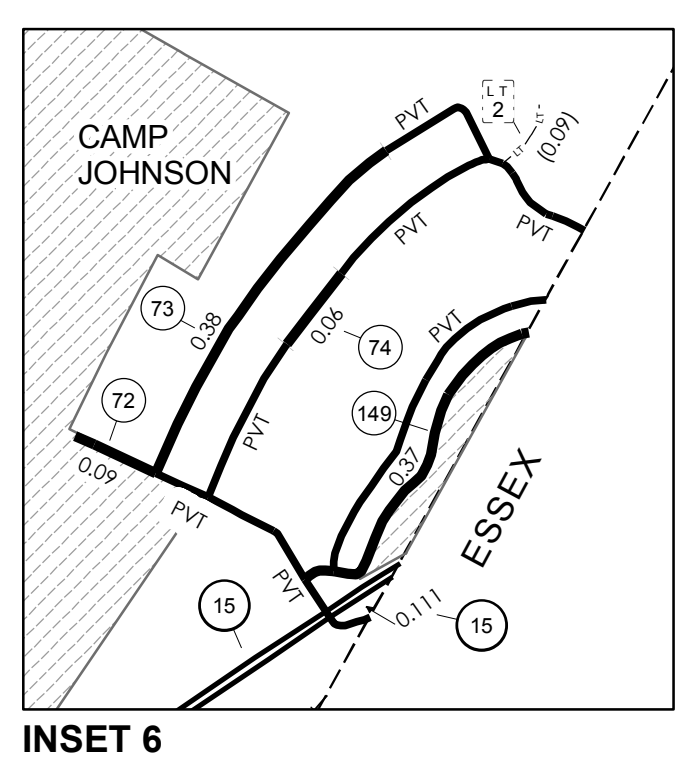
INSET 9



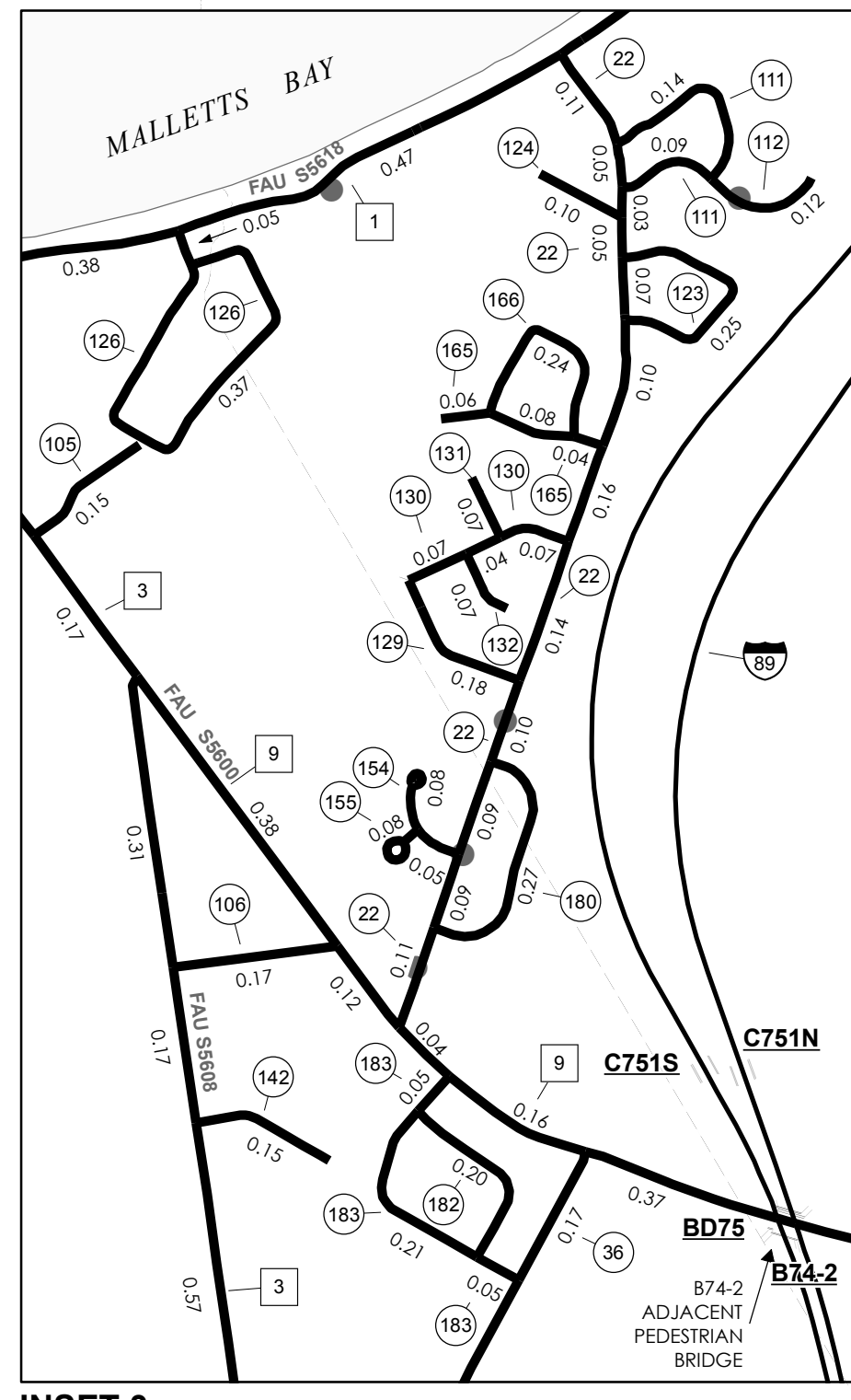
INSET 8



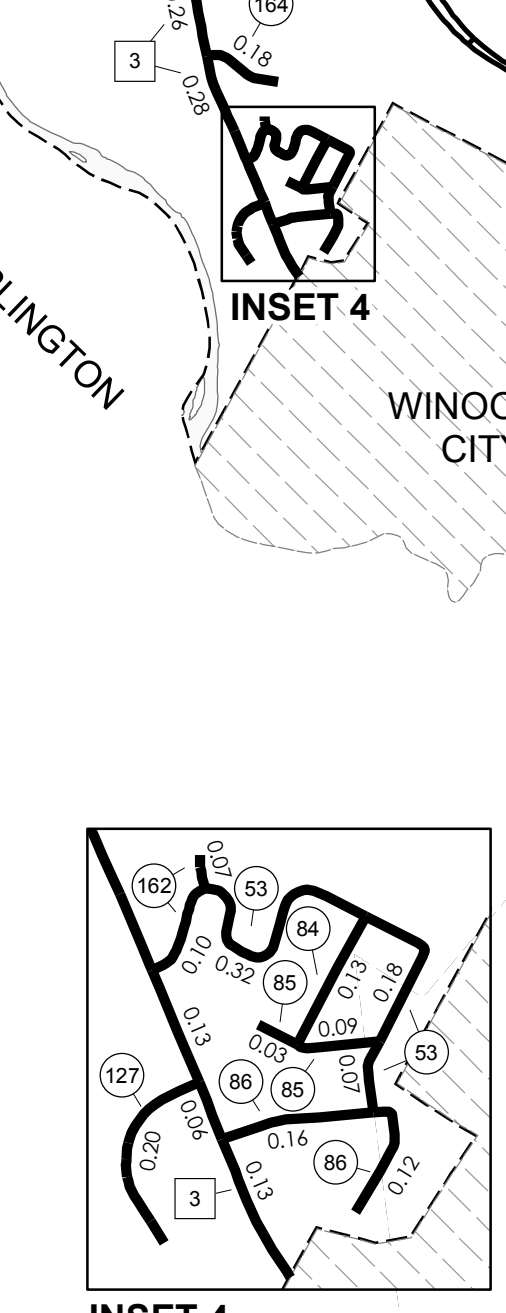
INSET 7



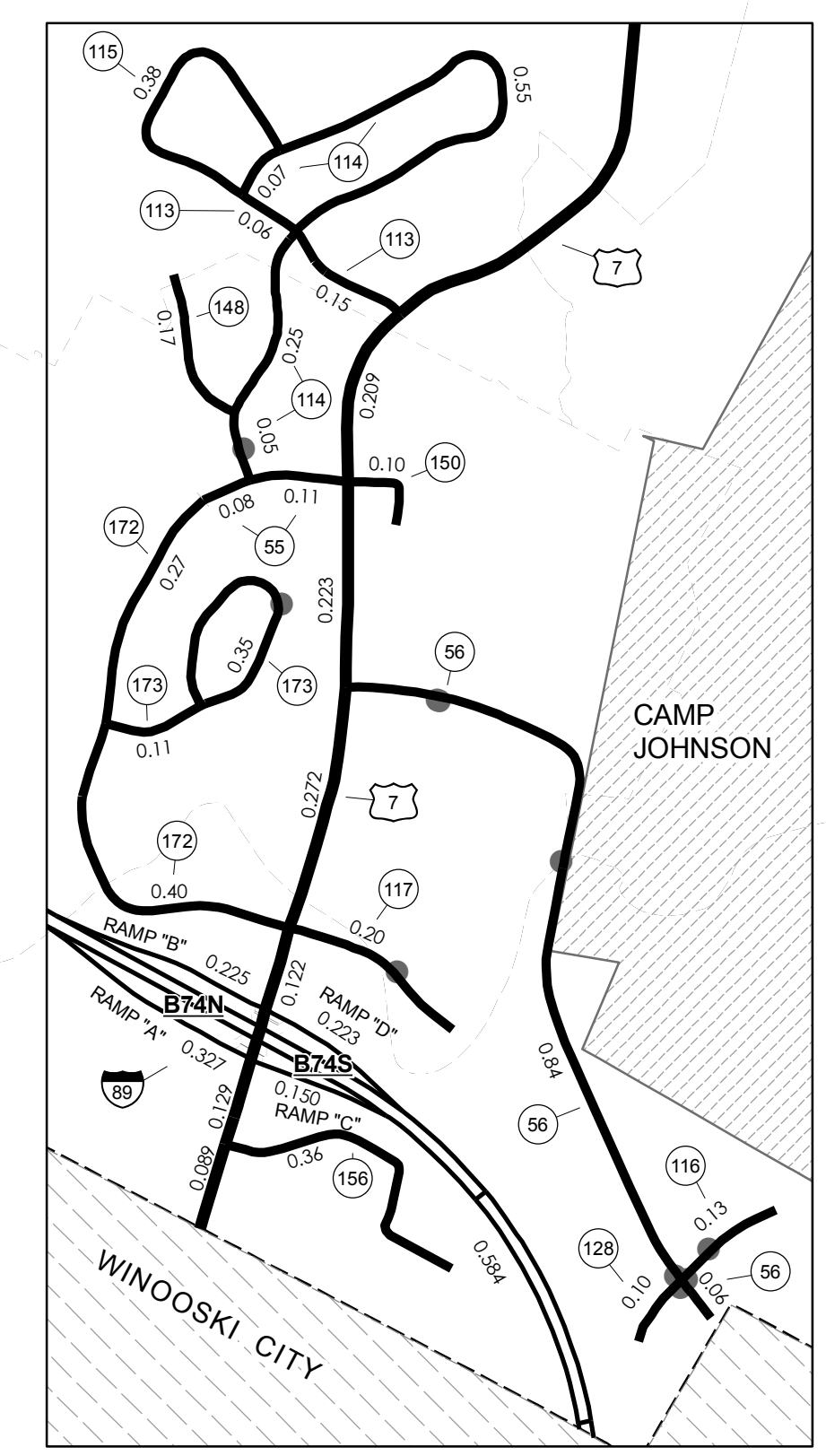
INSET 6



INSET 3



INSET 4



INSET 5

VERMONT GENERAL HIGHWAY MAP
Town of Colchester

CHITTENDEN COUNTY

Transportation District #5

Prepared by the
 Vermont Agency of Transportation
 Division of Planning, Outreach
 and Community Affairs
 in cooperation with
 U.S. Department of Transportation
 Federal Highway Administration

Mileage as of February 10, 2009
 Map prepared September 22, 2009

SCALE 1:31,680

