

- HIGHWAYS**
- INTERSTATE
 - STATE HIGHWAY SYSTEM
 - TOWN HIGHWAY SYSTEM
 - IMPASSABLE OR UNTRAVELED
 - DISCONTINUED
 - LEGAL TRAIL
 - FOOT TRAIL

- 89 INTERSTATE ROUTE
- 2 U. S. NUMBERED ROUTE
- 3 STATE NUMBERED ROUTE
- 7 INTERCHANGE NUMBER
- 4 CLASS 1 TOWN HIGHWAY
- 2 CLASS 2 TOWN HIGHWAY
- 8 CLASS 3 TOWN HIGHWAY
- 6 CLASS 4 TOWN HIGHWAY
- NFR NATIONAL FOREST ROAD
- SFH STATE FOREST HIGHWAY

- BRIDGE OR CULVERT < 6'
- BRIDGE OR CULVERT 6' - 20'
- BRIDGE GREATER THAN 20'
- COVERED BRIDGE

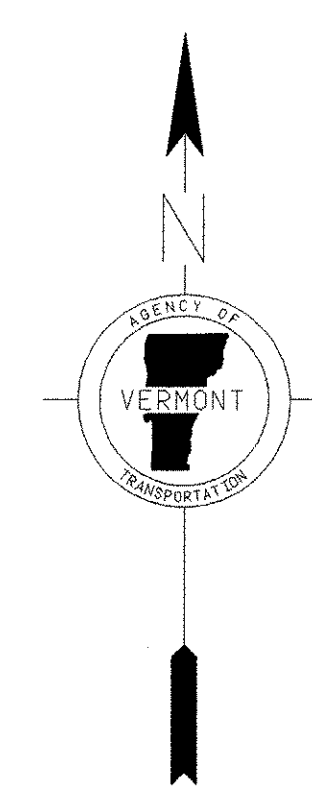
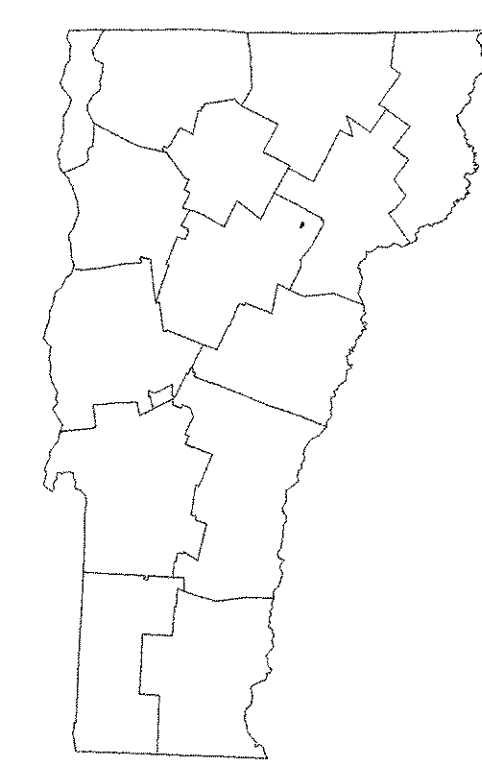
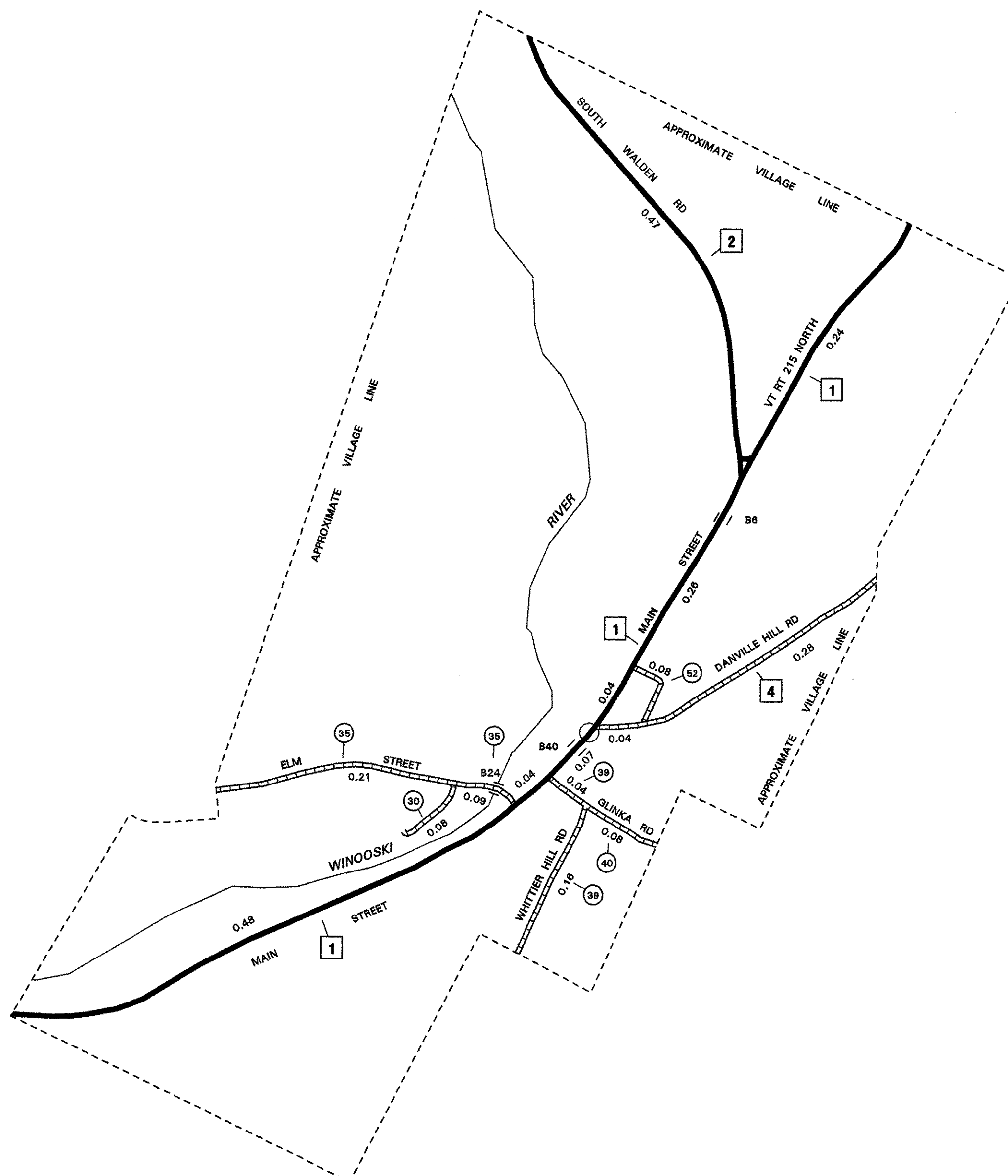
- ROAD SURFACE TYPES**
- STATE PAVED
 - OTHER PAVED
 - STATE GRAVEL
 - OTHER GRAVEL
 - GRADED AND DRAINED
 - UNIMPROVED/PRIMITIVE

- NATURAL FEATURES**
- SINGLE LINE STREAM
 - OPEN WATER
 - SWAMP

- OTHER TRANSPORTATION**
- RAILROAD
 - AIRPORT TERMINAL

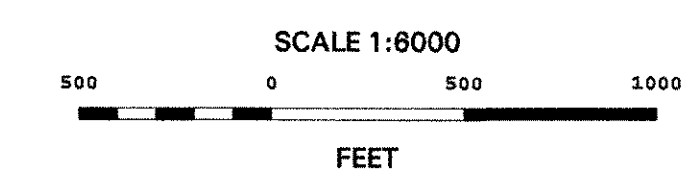
- POLITICAL SUBDIVISIONS**
- STATE BOUNDARY
 - COUNTY BOUNDARY
 - TOWN BOUNDARY
 - CITY BOUNDARY
 - VILLAGE BOUNDARY
 - URBAN COMPACT BOUNDARY

- MISCELLANEOUS**
- DAM



VERMONT GENERAL HIGHWAY MAP VILLAGE OF CABOT

PREPARED BY THE
VERMONT AGENCY OF TRANSPORTATION
PROGRAM DEVELOPMENT DIVISION
IN COOPERATION WITH
U. S. DEPARTMENT OF TRANSPORTATION
FEDERAL HIGHWAY ADMINISTRATION



TOWN HWY NO.	LENGTH IN MILES CLASS	CLASS
30	0.080	4
35	0.300	
39	0.200	
40	0.080	
52	0.080	
TOTAL	0.740	0.000

MILEAGE SUMMARY

CLASS 1 TOWN HIGHWAYS:		
TOTAL CLASS 1 TOWN HWYS.		0.000
CLASS 2 TOWN HIGHWAYS:		
NO. 1	1.130	
NO. 2	0.470	
NO. 4	0.320	
TOTAL CLASS 2 TOWN HWYS.		1.920
CLASS 3 TOWN HIGHWAYS:		
TOTAL CLASS 3 TOWN HWYS.		0.740
TOTAL TOWN HWYS.		2.660
STATE HIGHWAYS:		
INTERSTATE RAMP	0.000	
TOTAL INTERSTATE HWYS.		0.000
TOTAL NON-INTERSTATE HWYS.		0.000
TOTAL STATE HWYS.		0.000
TOTAL TRAVELLED HWYS., FEB. 10, 2003 (EXCLUDES CLASS 4 MILEAGE)		2.660

DISCLAIMER:
Highway and bridge data by Vermont Agency of Transportation, Division of Technical Services. All other data from Vermont Center for Geographic Information.