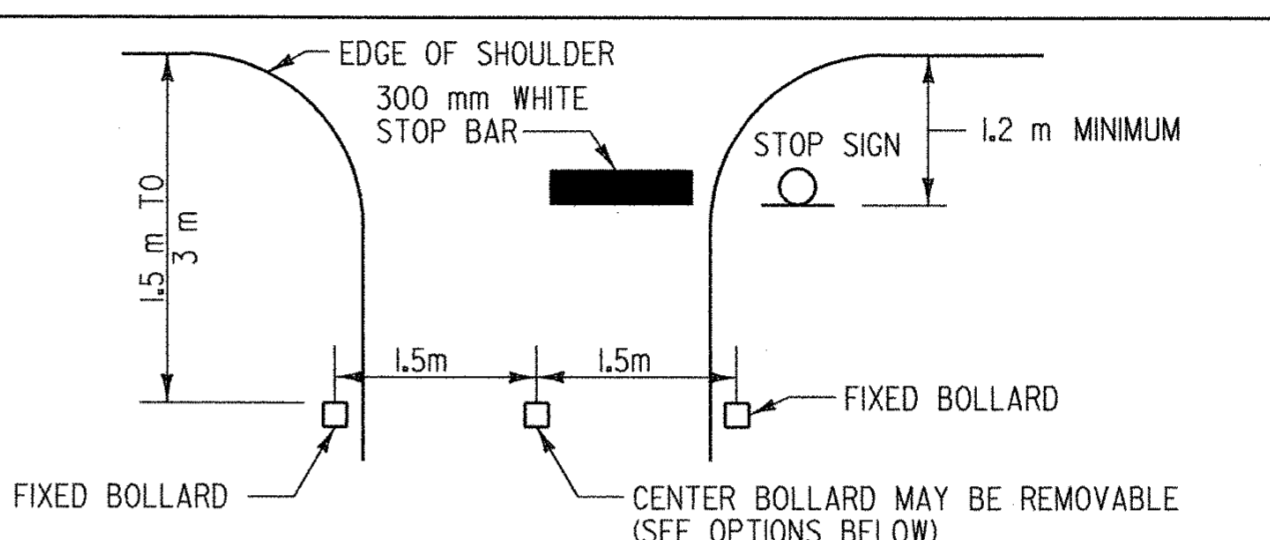


**TYPE 2 OBJECT MARKERS**

**MATERIALS:**  
 THE SIGN BASE MATERIALS SHALL BE THE FOLLOWING MINIMUM THICKNESS:  
 FLAT SHEET ALUMINUM 1.5 mm

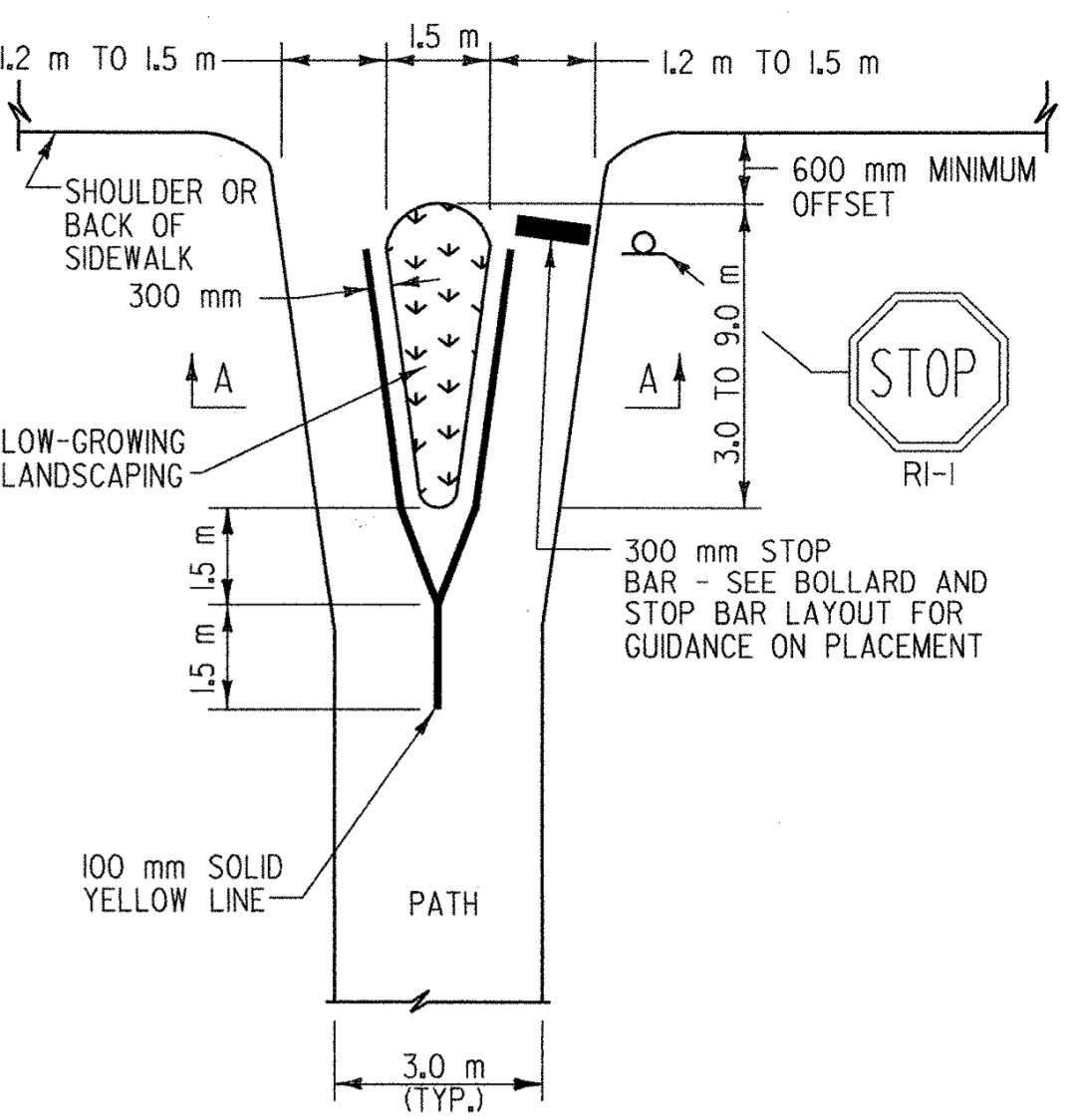
**SPECIFICATIONS:**  
 OBJECT MARKERS SHALL MEET THE VERMONT STANDARD SPECIFICATIONS FOR TRAFFIC SIGNS AS PRESCRIBED IN THE VAOT STANDARD SPECIFICATIONS FOR CONSTRUCTION.



**BOLLARD AND STOP BAR LAYOUT**

**NOTES:**

- BOLLARDS ARE NOT A REQUIREMENT AT EVERY ROAD CROSSING. THEIR USE SHOULD BE BASED ON PREVAILING CONDITIONS INCLUDING PATH USE AND VOLUME, ROADWAY VOLUME AND ADEQUACY OF SIGHT DISTANCE. REFER TO VAOT PEDESTRIAN AND BICYCLE FACILITY PLANNING AND DESIGN MANUAL FOR GUIDANCE.
- MAY USE ONLY SINGLE BOLLARD CENTERED IN PATH.
- IF USING MORE THAN ONE BOLLARD, USE AN ODD NUMBER WITH ADDITIONAL BOLLARDS PLACED BEYOND EDGE OF PATH SURFACE.
- MAY REDUCE BOLLARD SPACING TO 900 mm MINIMUM TO LIMIT PATH USE BY ATVS OR SNOWMOBILES, IN THIS CASE, BOLLARDS WILL BE PLACED IN PATH SURFACE.
- LOCATE STOP BAR AND SIGN AS CLOSE TO DESIRED STOPPING POINT AS POSSIBLE. STOP BAR AND SIGN SHOULD NOT BE LOCATED AT OR BEHIND BOLLARDS.
- THE DESIRED STOPPING POINT IS THE LOCATION BASED ON SITE CONDITIONS THAT BEST ALLOWS PATH USERS TO VIEW APPROACHING TRAFFIC.



**SPLIT PATH AT ROAD CROSSING**

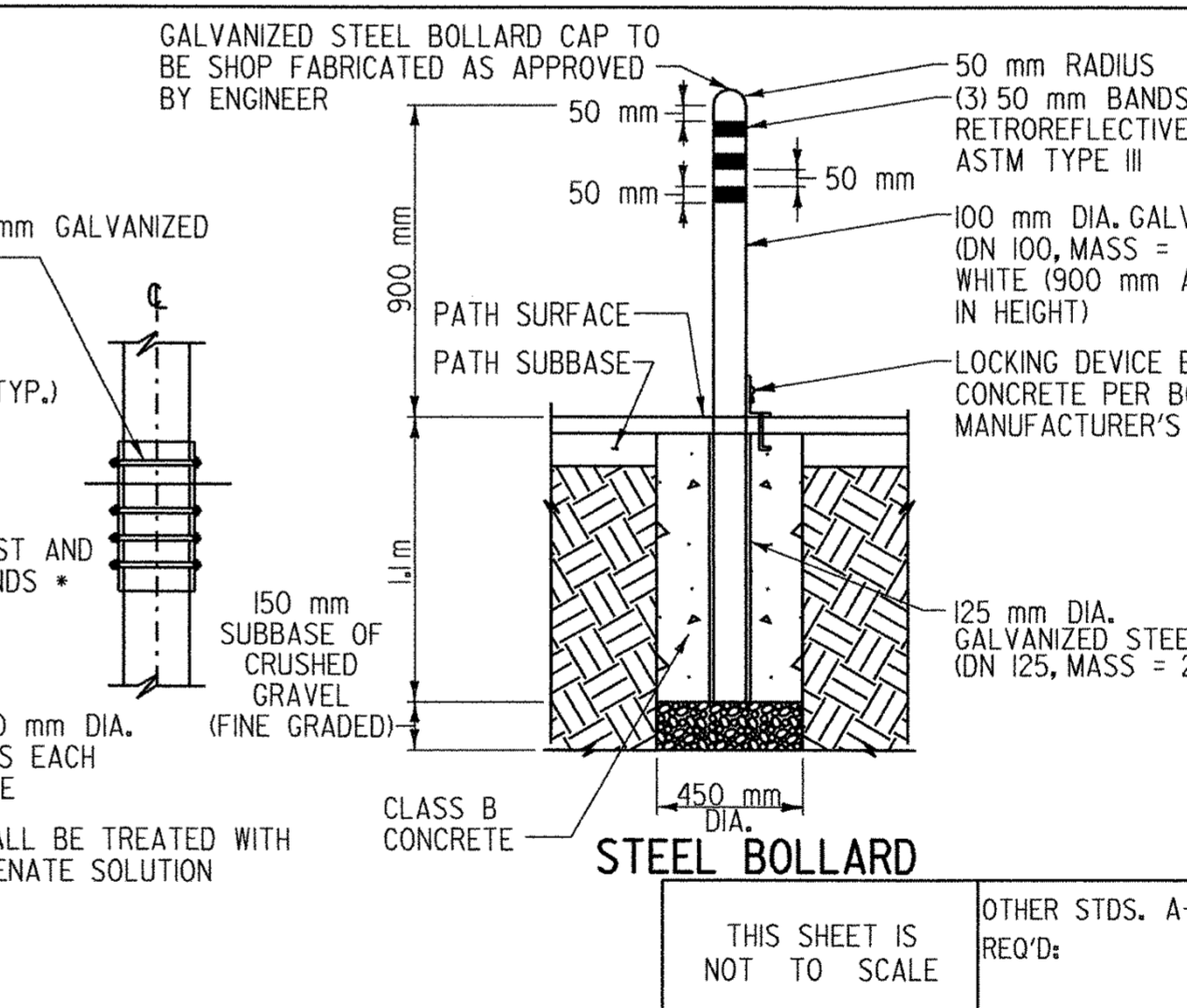
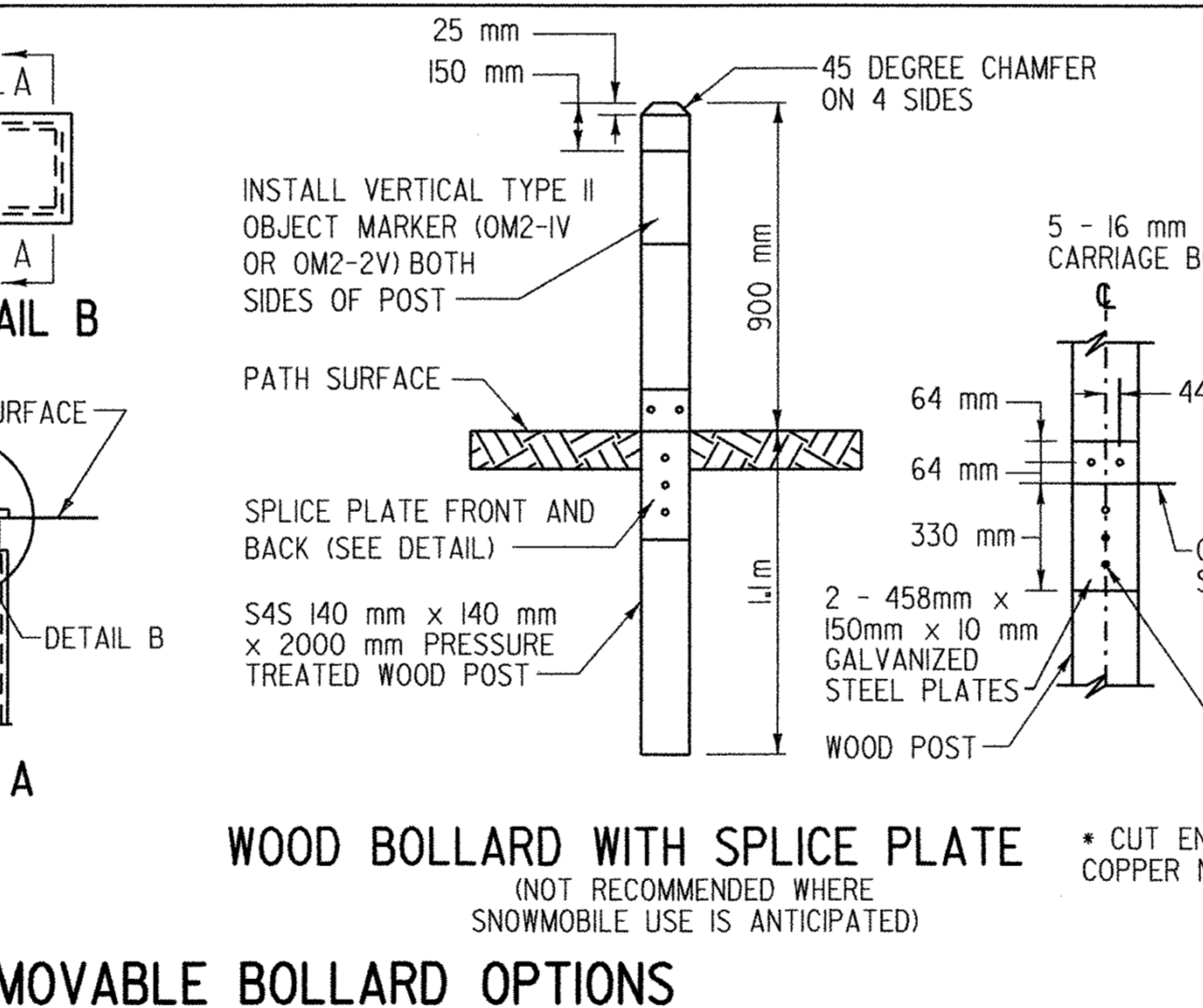
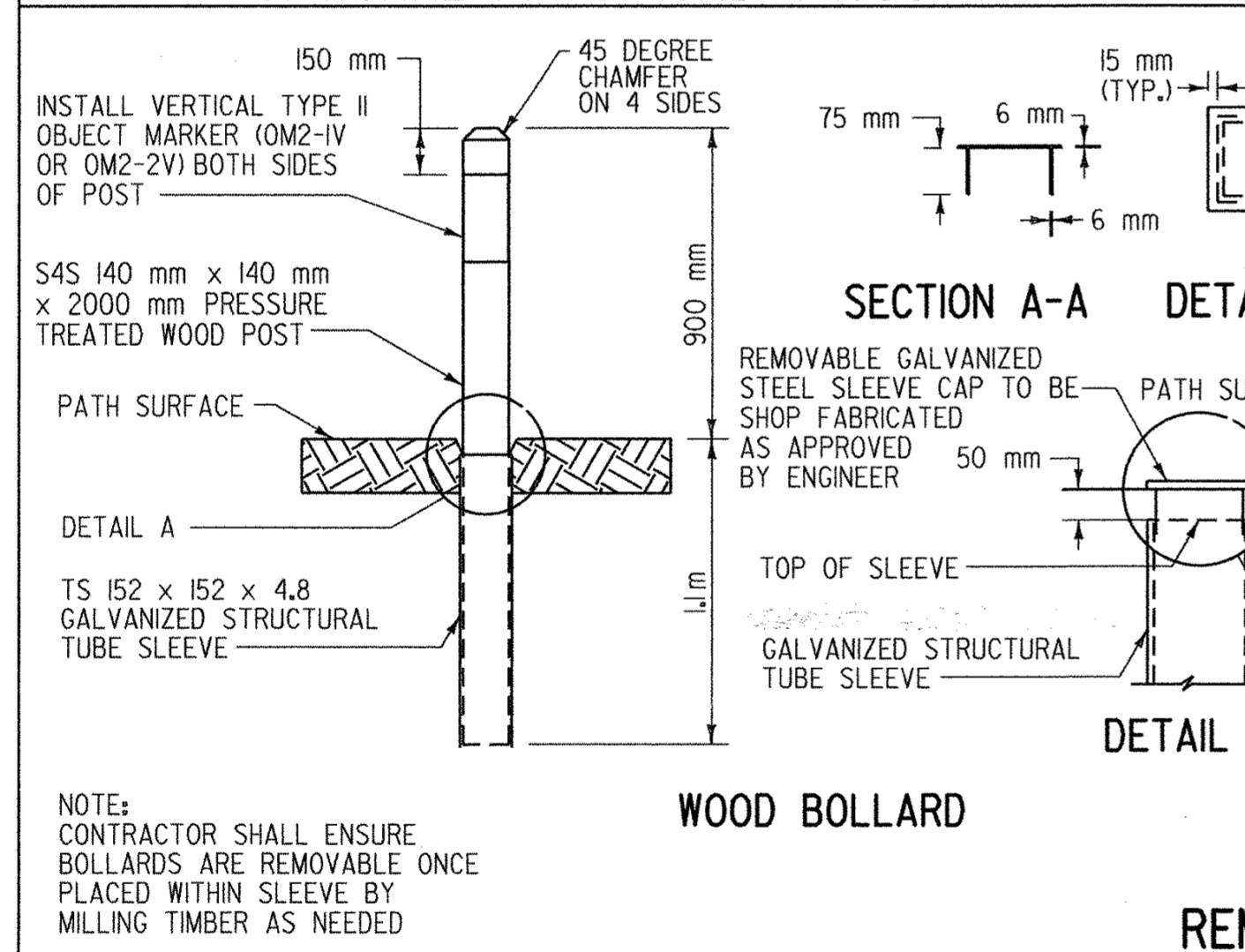
**NOTES:**

- THIS TREATMENT MAY BE USED IN LIEU OF OR IN COMBINATION WITH BOLLARDS AS SHOWN ON THIS DRAWING.

**SECTION A-A**

**NOTES:**

- EDGING TO BE PLACED PRIOR TO PLACING TOP SURFACE COURSE.
- JOINTS BETWEEN STONES TO BE MORTARED PER VAOT STANDARD SPECIFICATIONS FOR CONSTRUCTION.
- CURB TO BE GRANITE OR NOMINAL SIZE PRESSURE TREATED LUMBER.



**BOLLARD NOTES:**

- BOLLARD DESIGNS SHOWN ARE INTENDED ONLY WHEN A REMOVABLE CENTER BOLLARD IS DEEMED NECESSARY TO PROVIDE MAINTENANCE OR EMERGENCY VEHICLE ACCESS OR TO FACILITATE SNOWMOBILE USE.
- ALTERNATIVE REMOVABLE/COLLAPSIBLE BOLLARD DESIGNS MAY BE APPROVED BY THE ENGINEER.
- REMOVABLE BOLLARD DESIGN MUST BE COORDINATED WITH APPROPRIATE STATE OR LOCAL MAINTENANCE ENTITY.

THIS SHEET IS NOT TO SCALE

OTHER STDS. A-78M, A79M, E-131BM, E-143M, E-153BM, E-194M, E-195M, E-198M REQ'D:

NOTE: ALL DIMENSIONS ARE IN MILLIMETERS (mm) EXCEPT WHERE NOTED.

**REVISIONS AND CORRECTIONS**

MAY 2, 2003 - DATE OF ORIGINAL ISSUE

**APPROVED**

*[Signature]*  
 DIRECTOR OF PROGRAM DEVELOPMENT

*[Signature]*  
 LOCAL TRANSPORTATION FACILITIES PROGRAM MANAGER

*[Signature]*  
 FEDERAL HIGHWAY ADMINISTRATION

# SHARED USE PATH/HIGHWAY INTERSECTION DETAILS

