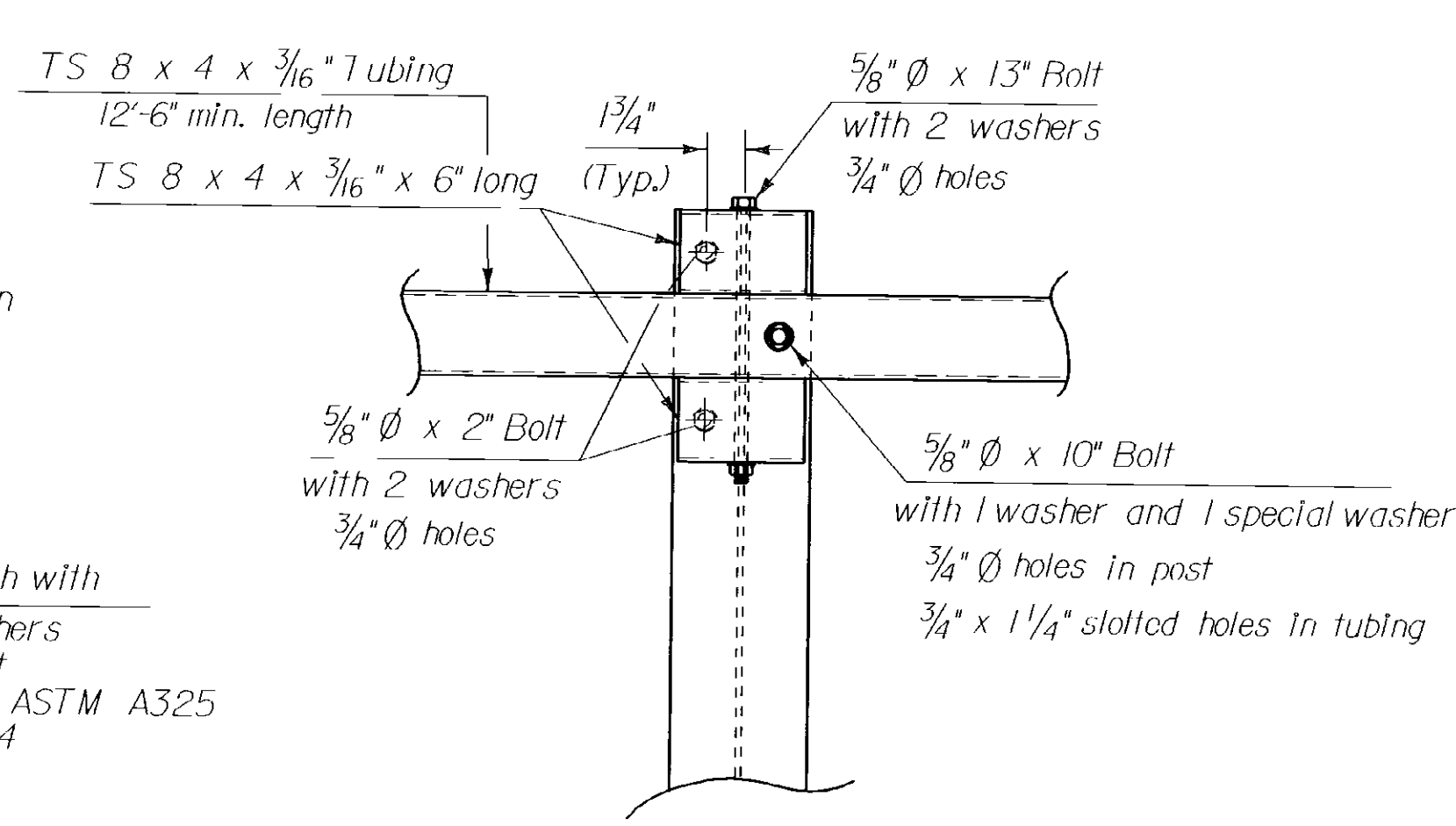
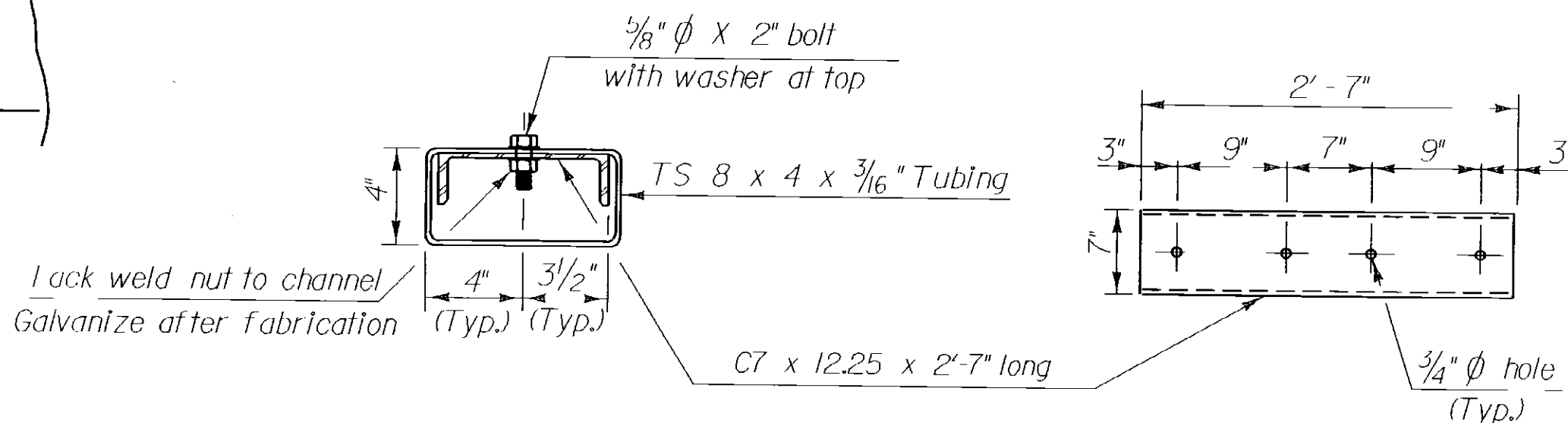


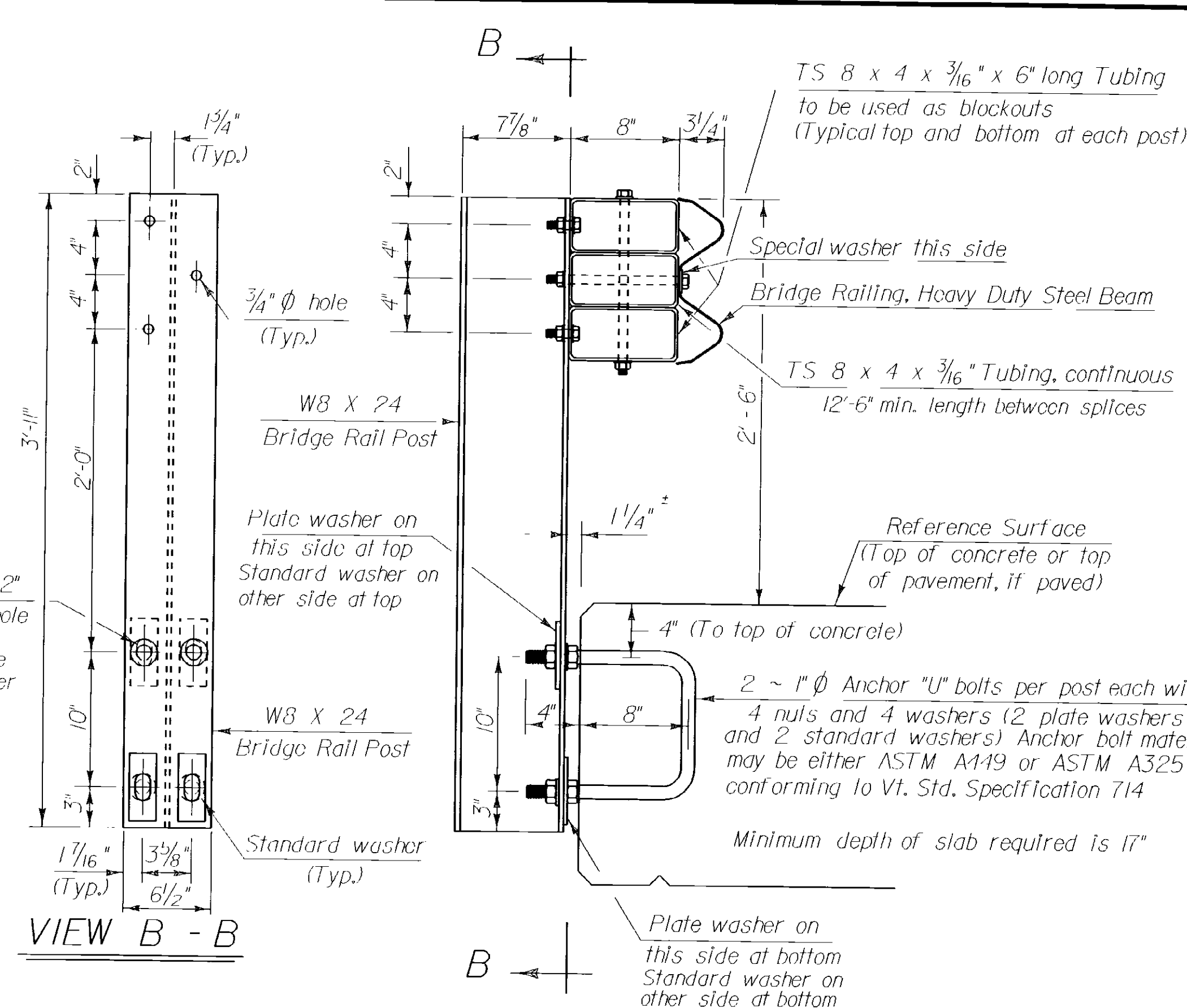
FASCIA MOUNTED WITH CURB



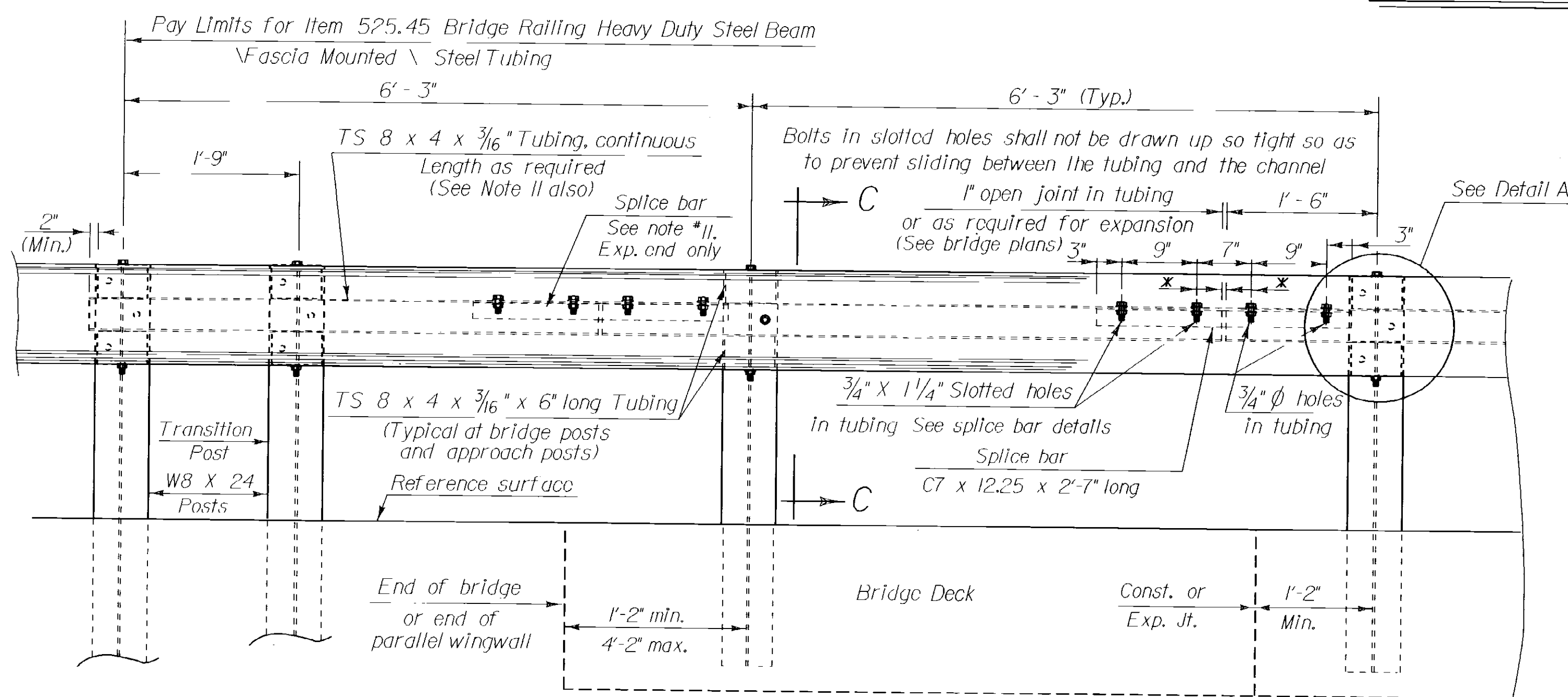
DETAIL A
Steel Beam Guard Rail Not Shown



SPLICE BAR DETAILS



FASCIA MOUNTED WITHOUT CURB



RAILING ELEVATION VIEW
(SHOWN LOOKING FROM CURB WITHOUT CURB)

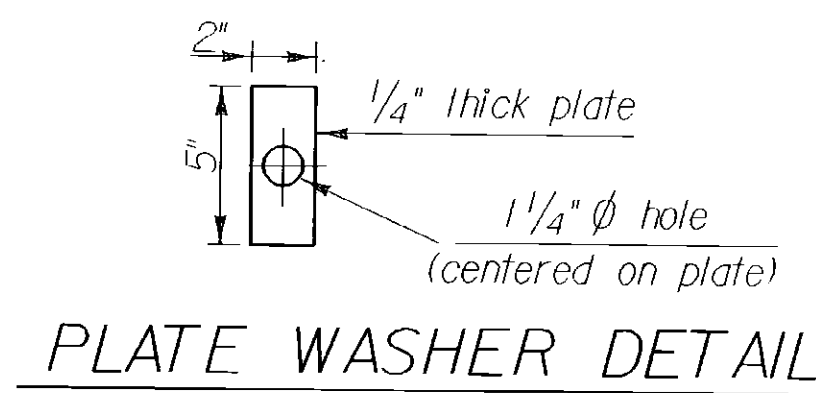
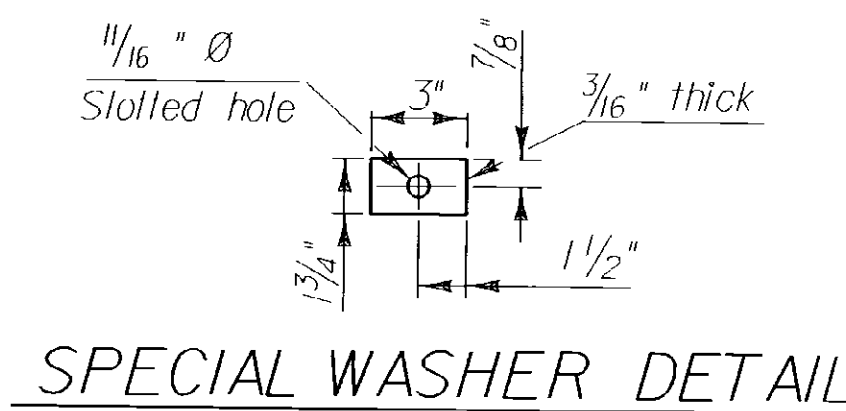
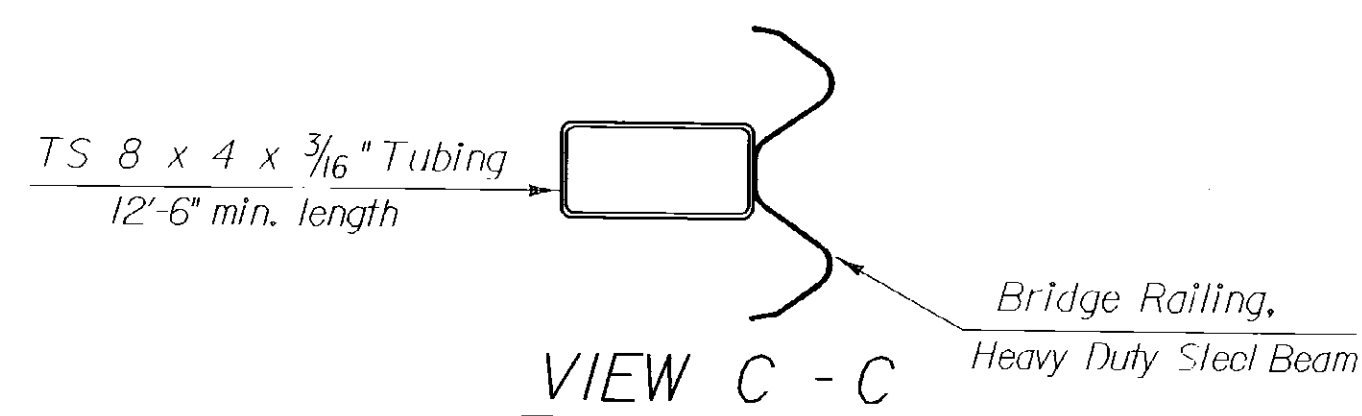


PLATE WASHER DETAIL



SPECIAL WASHER DETAIL



VIEW C - C

NOTES

- HEAVY DUTY STEEL BEAM GUARD RAIL SHALL CONFORM TO VT. SPECIFICATION 732.
- STRUCTURAL STEEL TUBING SHALL CONFORM TO VT. SPECIFICATION 732 GALVANIZED AFTER FABRICATION IN ACCORDANCE WITH AASHTO M 111.
- ANCHOR BOLTS, NUTS AND WASHERS SHALL BE GALVANIZED IN ACCORDANCE WITH AASHTO M232 AND SHALL CONFORM TO VT. SPECIFICATION 714 UNLESS OTHERWISE NOTED.
- BRIDGE RAIL POSTS, SPECIAL WASHERS, PLATE WASHERS AND SPLICE BARS SHALL CONFORM TO AASHTO M223/M223M GALVANIZED AFTER FABRICATION IN ACCORDANCE WITH AASHTO M 111.
- ALL BOLTS AND RELATED HARDWARE SHALL CONFORM TO AASHTO M164 TYPE I BOLTS, HOT DIPPED OR MECHANICALLY GALVANIZED PER SPECIFICATION.
- SEE STANDARD DRAWING G-1 AND G-1d FOR ADDITIONAL DETAILS CONCERNING GUARD RAIL.
- SEE STANDARD DRAWING SB-R6-82 FOR APPROACH RAIL DETAILS AND FOR INFORMATION RELATIVE TO SCHEDULE I AND SCHEDULE II. ALL APPROACH RAIL SHALL BE HEAVY DUTY STEEL BEAM GUARD RAIL. ALSO SEE STD. DRWG. SB-R6-82 FOR HANDRAIL DETAILS (EXCEPT END DETAILS) IF HAND RAIL IS REQUIRED.
- ALL POSTS SHALL BE SET NORMAL TO GRADE.
- SPLICES FOR THE STEEL BEAM GUARD RAIL SHALL LAP IN THE DIRECTION OF TRAFFIC.
- SEE STANDARD DRAWING G-1 FOR DETAILS OF DELINEATORS. A DELINEATOR SHALL BE LOCATED AT EVERY FIFTH POST. PAYMENT SHALL BE SUBSIDIARY TO OTHER ITEMS.
- A RAILING JOINT SPLICE SHALL BE PROVIDED AT EACH SUPERSTRUCTURE EXPANSION JOINT.
- ALL FIELD CUT OR DRILLED AREAS SHALL BE COATED WITH ZINC RICH PAINT.
- FOR RADII LESS THAN 950 FEET, THE STEEL TUBING SHALL BE SHOP BENT TO FIT THE APPLICABLE CURVE.
- THE DROP-WEIGHT TEAR TEST IN SECTION 732 SHALL NOT APPLY TO THE STRUCTURAL TUBING ON THIS STANDARD.

REVISIONS AND CORRECTIONS

Depth of W6 x 20 post revised to be correct
DWN 3/10/92

Note 7 revised allowing std. steel beam guard rail to be used as approach rail
DWN 8/3/94

Changed rail to Heavy Duty Steel Beam.
Changed rail post, splice bar and plate washer steel to AASHTO M223/M223M.
J.H.W. 1/11/95

APPROVED

11/11/95
DATE

Paul C. Egan
DIRECTOR OF CONSTRUCTION AND MAINTENANCE

George P. MacArthur
DIRECTOR OF ENGINEERING

William B. S. Jr.
STRUCTURES ENGINEER

BRIDGE RAILING, HEAVY DUTY STEEL BEAM / FASCIA MOUNTED / STEEL TUBING

APPROVED FOR THIS PROJECT AND/OR DESIGN IMPLEMENTATION. FHWA FINAL APPROVAL PENDING.



STANDARD SB-R7-90