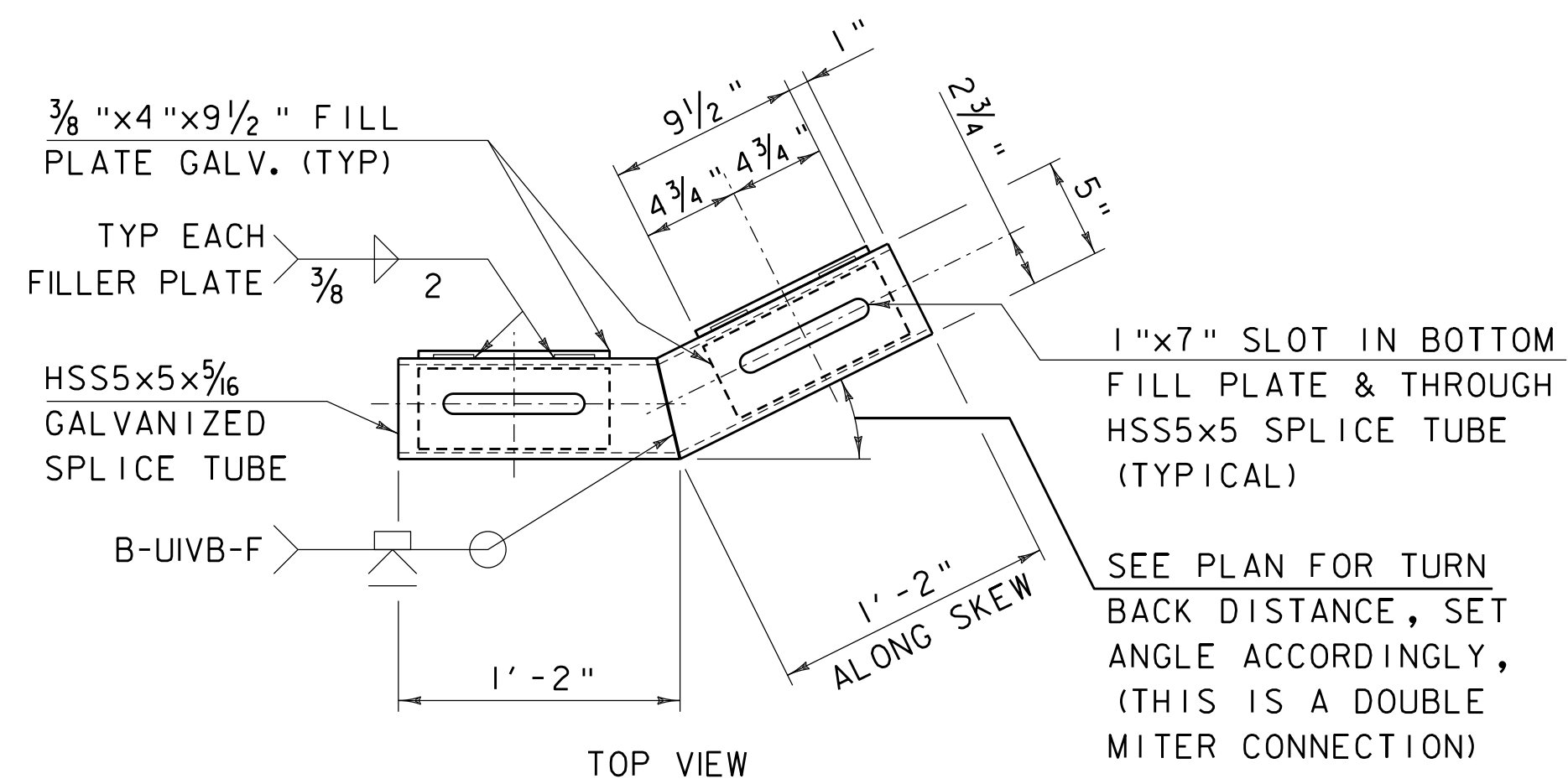
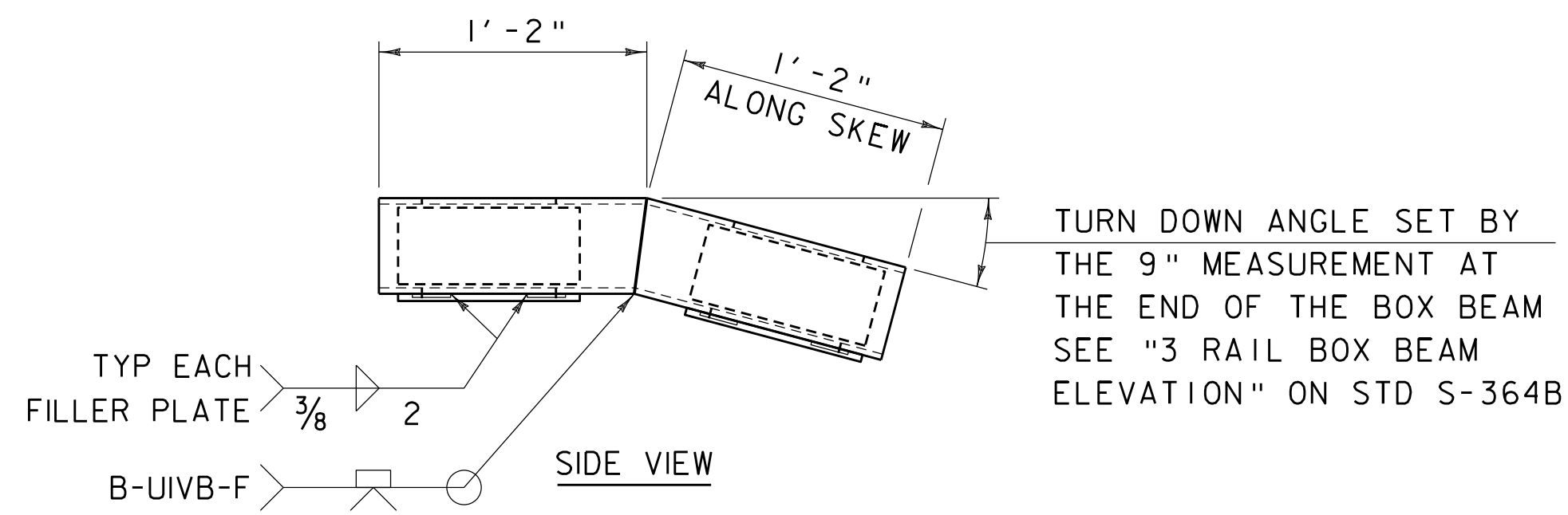


TURN BACK SPLICE TUBE ASSEMBLY

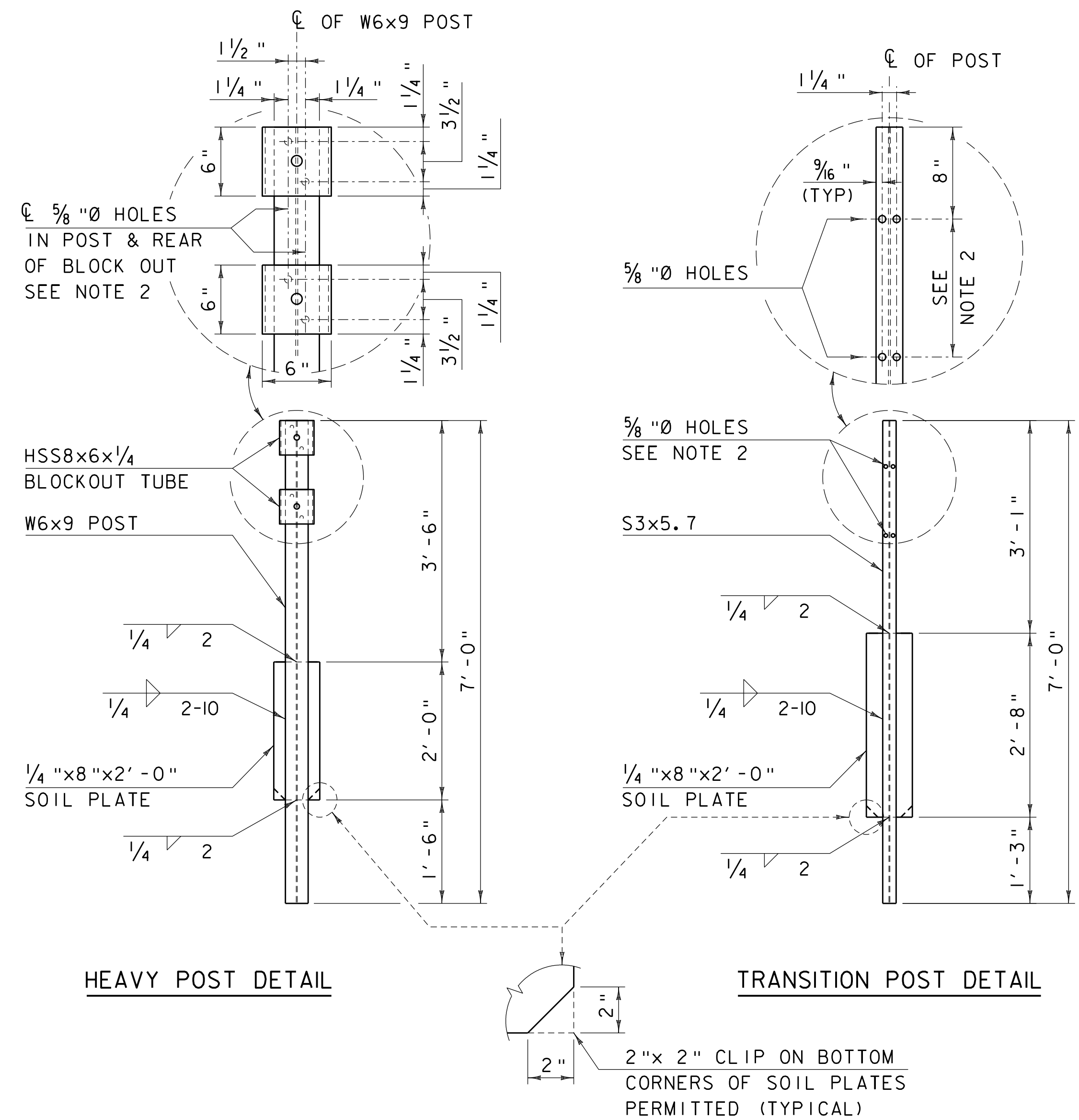


TOP VIEW



SIDE VIEW

TURN BACK SPLICE TUBE DETAIL
TURN BACK & TURN DOWN TUBE JOINT



HEAVY POST DETAIL

TRANSITION POST DETAIL

NOTES:

- PROTRUSIONS CAUSED BY WELDING OR GALVANIZING ARE NOT PERMITTED ON THE ADJOINING SURFACES OF THE BOX BEAM RAILS, SPLICE TUBES AND FILL PLATES.
- HOLES IN THE POST FOR THE LOWER RAIL MAY BE LOCATED AND DRILLED IN THE FIELD. IF SO, THE GALVANIZING SHALL BE REPAIRED IN ACCORDANCE WITH SPECIFICATION SECTION 525.

REVISIONS AND CORRECTIONS
AUGUST 9, 2010 - ORIGINAL APPROVAL

APPROVED

Jim Mical
STRUCTURES PROGRAM MANAGER

Rick J. Johnson
DIRECTOR OF PROGRAM DEVELOPMENT

Mark D. Kiebler
FEDERAL HIGHWAY ADMINISTRATION

GUARDRAIL APPROACH
SECTION, GALVANIZED
3 RAIL BOX BEAM



STANDARD
S-364D