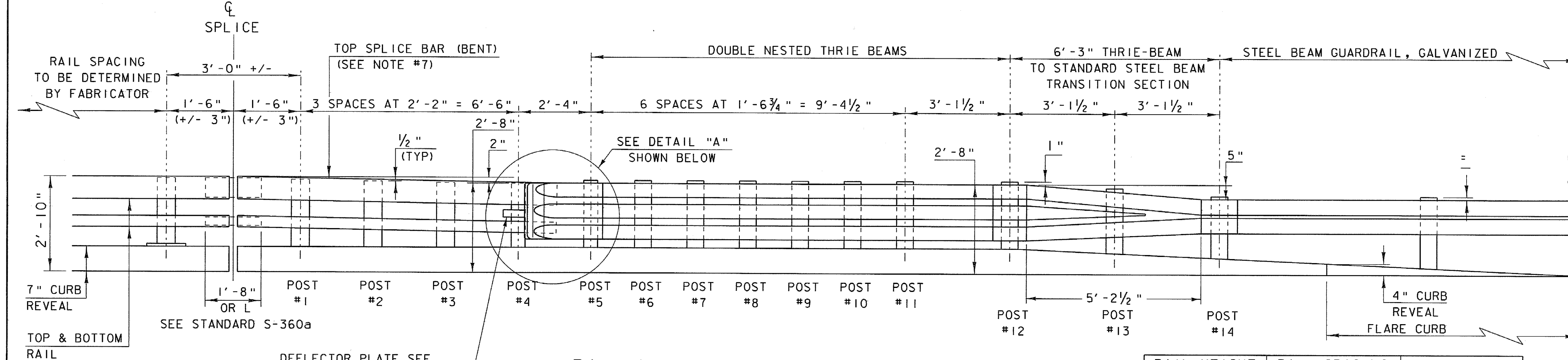
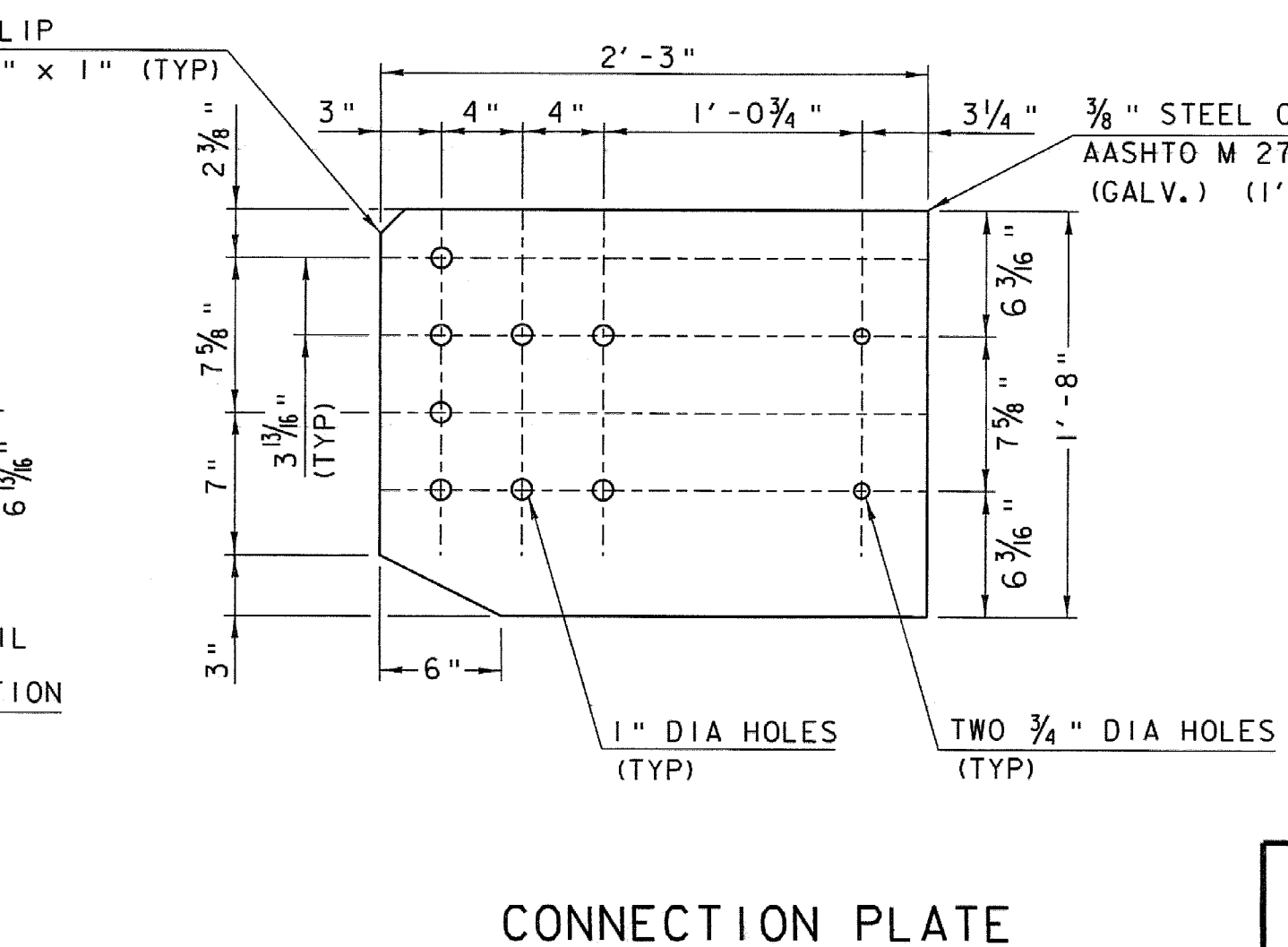
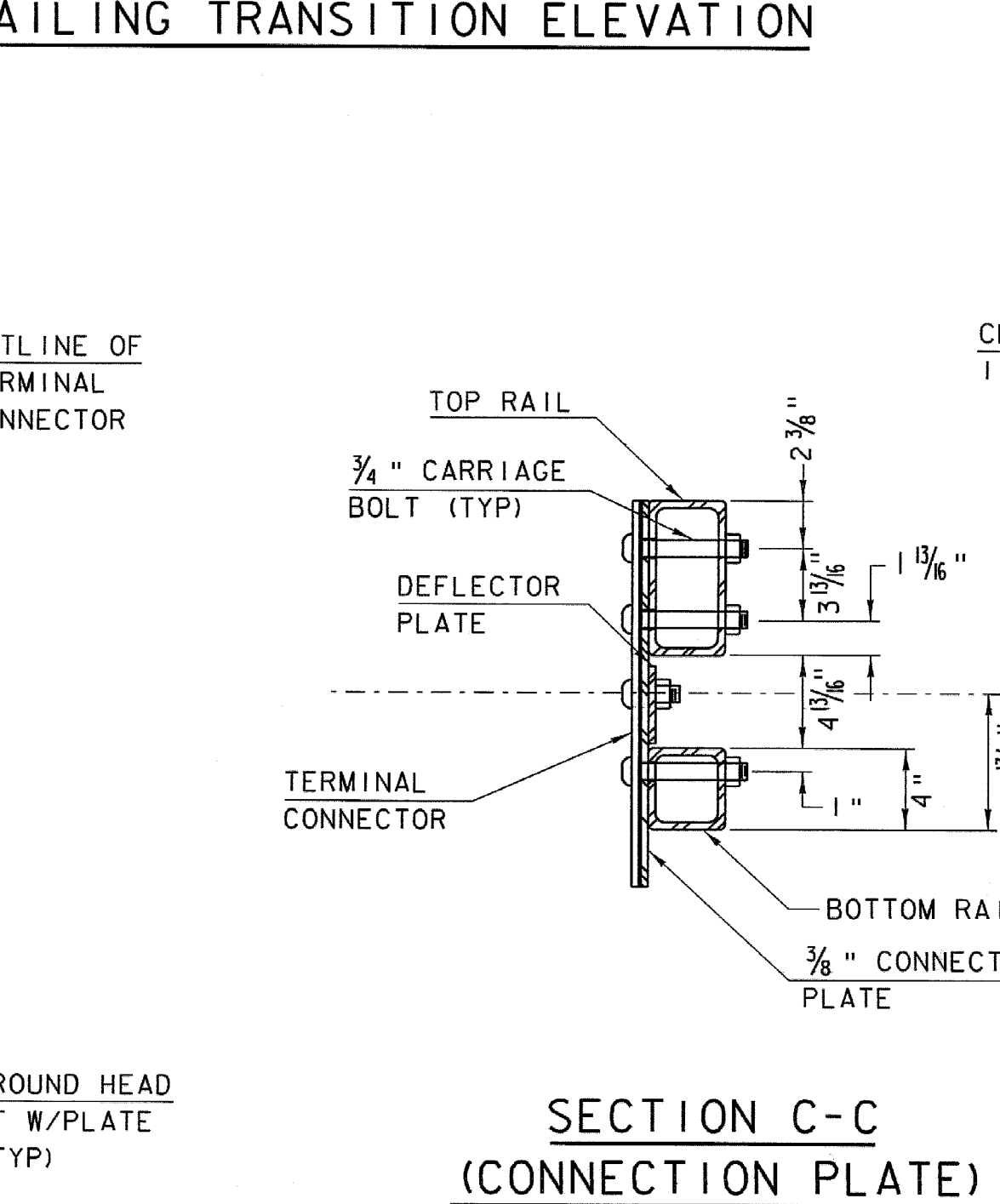
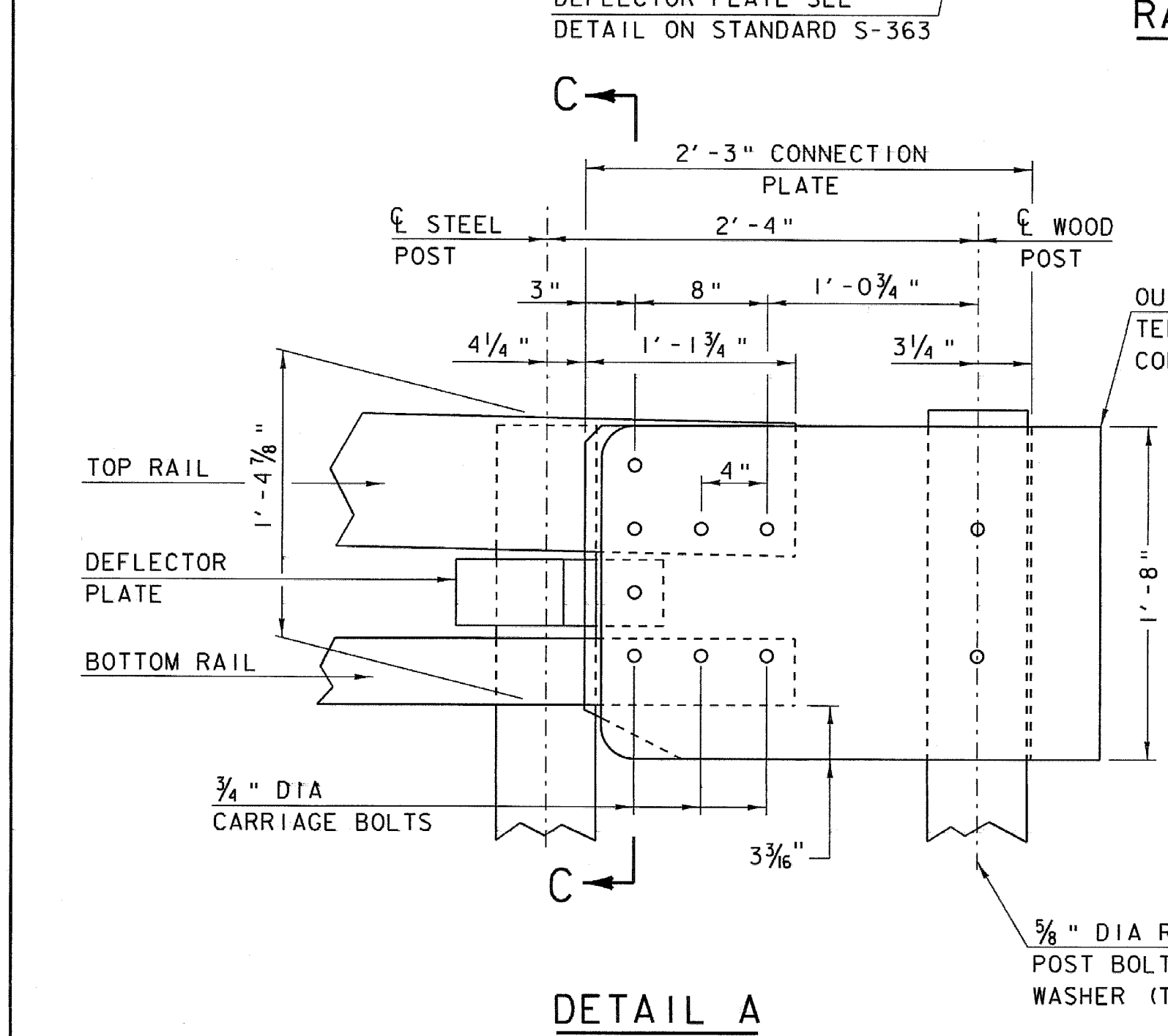
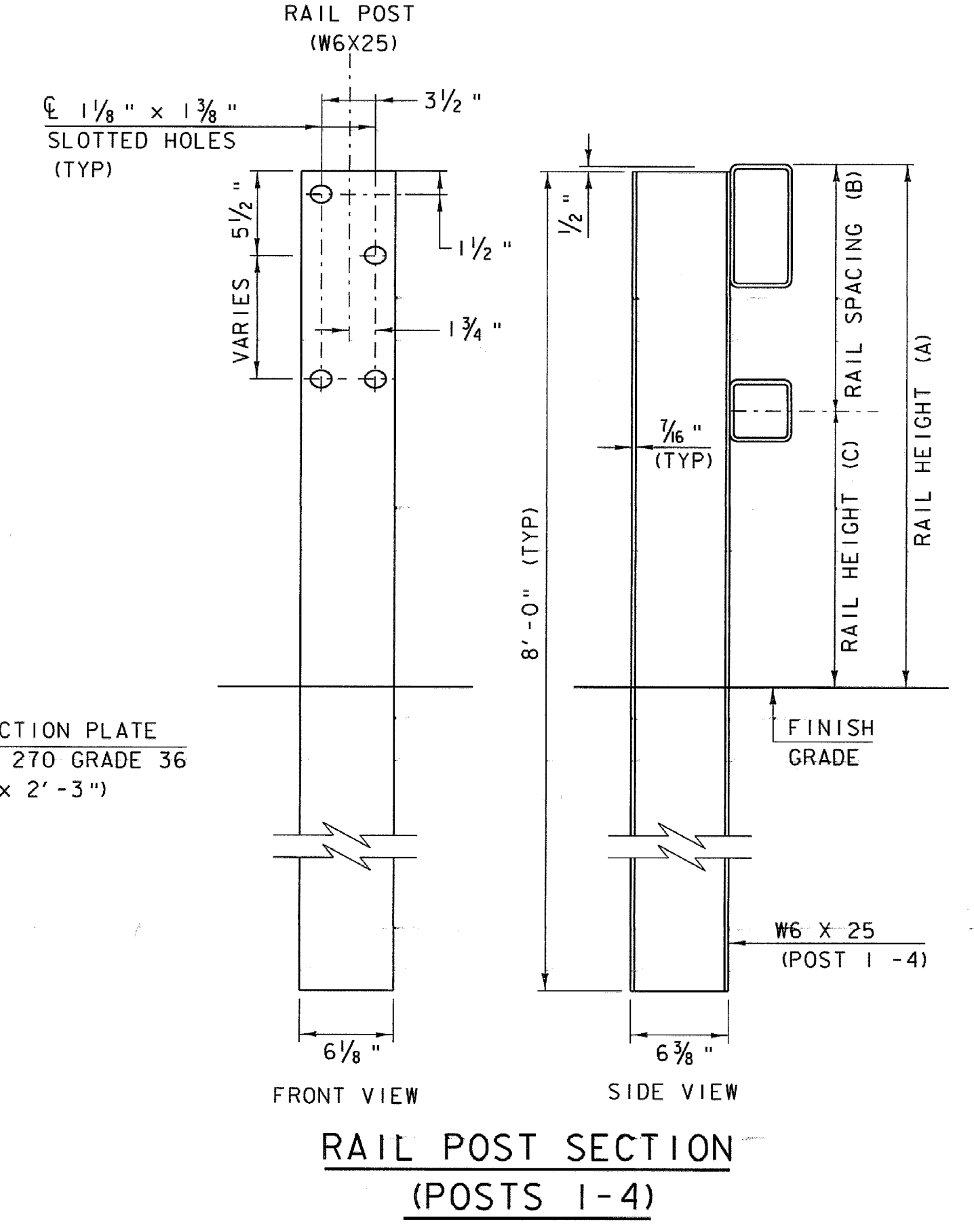


NOTES

1. REFER TO STANDARD S-360a FOR ADDITIONAL DETAILS, NOTES AND MATERIAL SPECIFICATIONS.
2. PAYMENT FOR GUARDRAIL APPROACH SECTION - GALVANIZED NETC 2 RAIL SHALL INCLUDE THE TERMINAL CONNECTOR, THE CONNECTION PLATE, THE DEFLECTOR PLATE, RAIL, POSTS, BLOCKS AND ATTACHMENT HARDWARE.
3. RETROREFLECTIVE MATERIAL SHALL MEET REQUIREMENTS OF SUBSECTION 750.08 AND SHALL BE A 0.063" ALUMINUM BACKING WHITE OR YELLOW REFLECTOR. WHITE IS TO BE INSTALLED ON THE DRIVER'S RIGHT. FOR ONE-WAY BRIDGES, YELLOW IS TO BE INSTALLED ON THE DRIVER'S LEFT.
4. ALL APPROACH RAIL SPLICES SHALL BE LAPPED IN THE DIRECTION OF TRAFFIC FLOW.
5. TUBE AND STEEL POST MATERIALS, DIMENSION SIZES AND NOTES SHALL BE THE SAME AS THOSE OF THE BRIDGE RAIL, UNLESS OTHERWISE NOTED.
6. APPROACH RAIL BOLTS SHALL BE ASTM A307 GRADE A AND NUTS SHALL BE AASHTO M291 (ASTM A563 GRADE A OR BETTER) (GALVANIZED). WASHERS SHALL BE ASTM F844.
7. WELD TOP SPLICE BAR TO FIT BEND. USE COMPLETE PENETRATION WELD (B-U2).



POST NUMBER	RAIL HEIGHT (A)	RAIL SPACING (B)	RAIL HEIGHT (C)
1	2'-9 1/2"	1'-3 3/4"	1'-5 3/4"
2	2'-9"	1'-3 1/2"	1'-5 1/2"
3	2'-8 1/2"	1'-3 1/8"	1'-5 5/8"
4	2'-8"	1'-2 7/8"	1'-5 1/8"

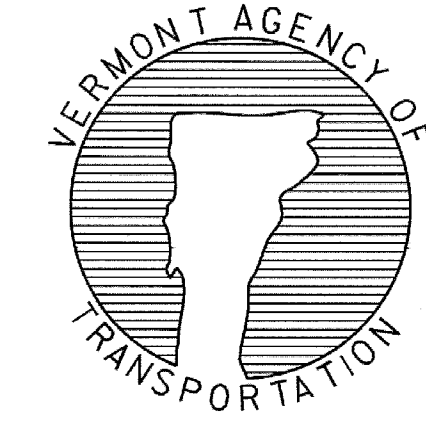


OTHER STDS. REQUIRED: S-360a, S-363

REVISIONS AND CORRECTIONS
December 14, 2009 - ORIGINAL APPROVAL DATE

APPROVED
Jim. Michael Hedges P.E.
STRUCTURES ENGINEER
Richard Schaub P.E.
DIRECTOR OF PROGRAM DEVELOPMENT
Mark D. Ristler
FEDERAL HIGHWAY ADMINISTRATION

**GUARDRAIL APPROACH SECTION,
GALVANIZED NETC 2 RAIL**



**STANDARD
S-360b**